



# Schooner Close

London, E14

Asking Price £450,000

Stylish and well-located 2-bedroom apartment featuring elegant wooden flooring, and a modern kitchen with integrated appliances.

**CHESTERTONS**



# Schooner Close

London, E14

- Mudchute DLR 0.7km
- Crossharbour DLR 0.7km
- Approx. 870sq ft
- Off-Street Parking
- Two Double Bedrooms
- Two Bathrooms
- Balcony included



The property features 2 spacious bedrooms, thoughtfully designed to provide a relaxing retreat, complemented by stylish wooden flooring that flows seamlessly throughout the main living areas, adding warmth and a contemporary finish.

At the heart of the home is a sleek, modern kitchen fitted with integrated appliances, creating a clean and streamlined space ideal for both everyday living and entertaining.

Conveniently located with excellent access to Canary Wharf, local amenities, and transport links, this apartment is perfectly suited for professionals and investors alike.

Schooner Close is a quiet residential side-turning located just off of Manchester Road, along the east of the Isle of Dogs. Local transport services can be found at Mudchute and Crosshabout DLR Stations, both of which are located 0.7km away, and there are an array of local bus services giving access to Canary Wharf's, the City of London and London's famous West End. Mudchute Park is also located close by, perfect for young families and those looking for open green space to relax in.

**Tenure:** Leasehold 970 years approx. remaining.

**Service Charge:** £2,084 pa (incl. £1,334.48 yearly service charge + £750 yearly reserve fund)

**Ground Rent:** TBC

**Local Authority:** Tower Hamlets

**Council Tax Band:** D

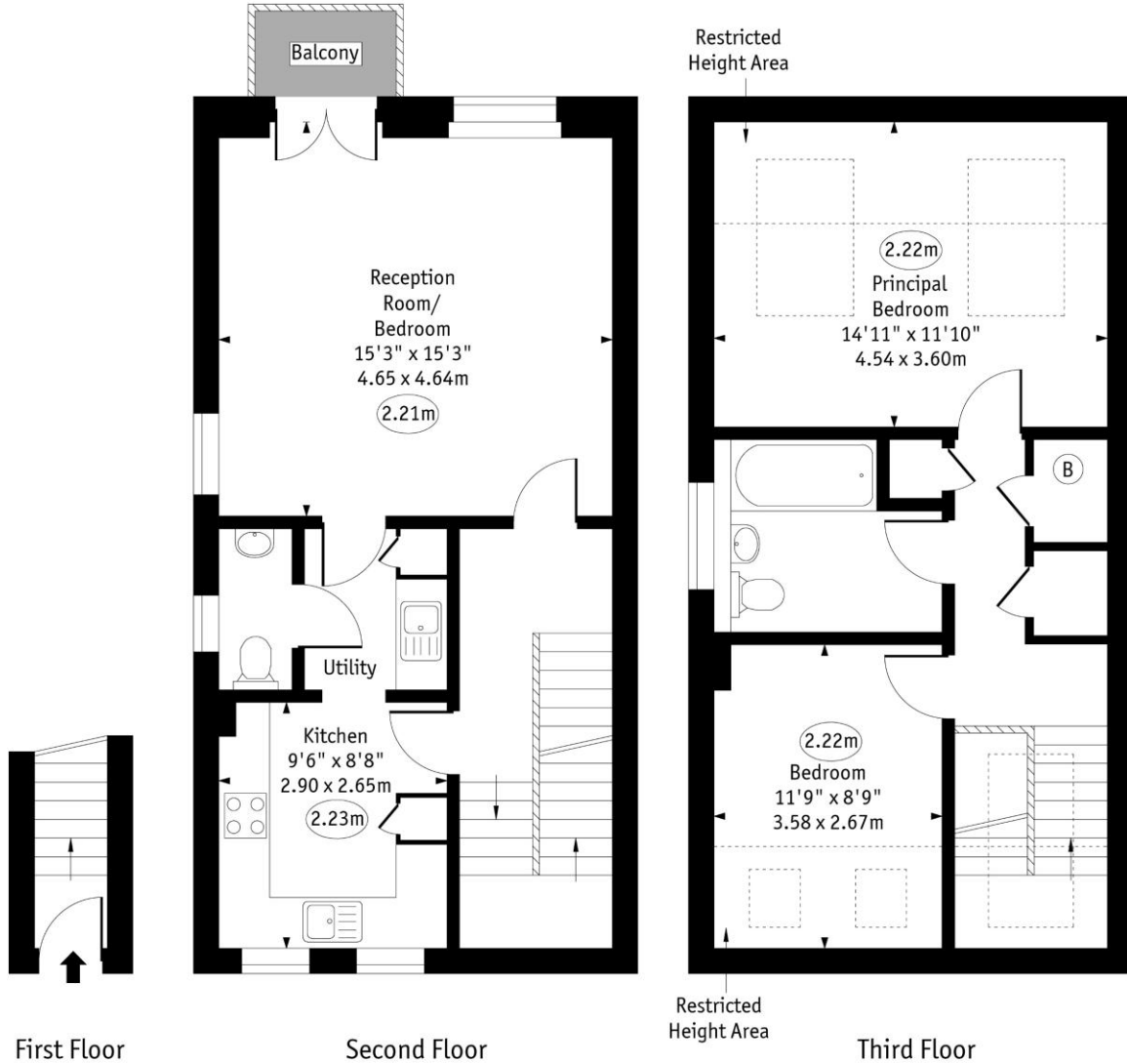
Score	Energy rating	Current	Potential
92+	A		
81-91	B		
69-80	C	79 C	79 C
55-68	D		
39-54	E		
21-38	F		
1-20	G		

### *Chestertons Canary Wharf & Greenwich Sales*

Harbour Island  
 28 Harbour Exchange Square  
 London  
 E14 9GE  
 canarywharf@chestertons.co.uk  
 020 7510 8300  
 chestertons.co.uk

# Schooner Close, E14

○ - Ceiling Height



Approx Gross Internal Area 870 Sq Ft - 80.79 Sq M

Approx. Floor Area Including Restricted Heights 990 Sq Ft - 91.97 Sq M

Every attempt has been made to ensure the accuracy of the floor plan shown. However, all measurements, fixtures, fittings, and data shown are approximate interpretations and for illustrative purposes only. Measured according to the RICS. Not To Scale.

www.goldlens.co.uk  
Ref. No. 031353JH

