



Addison Avenue
W11

Addison Avenue Holland Park, W11

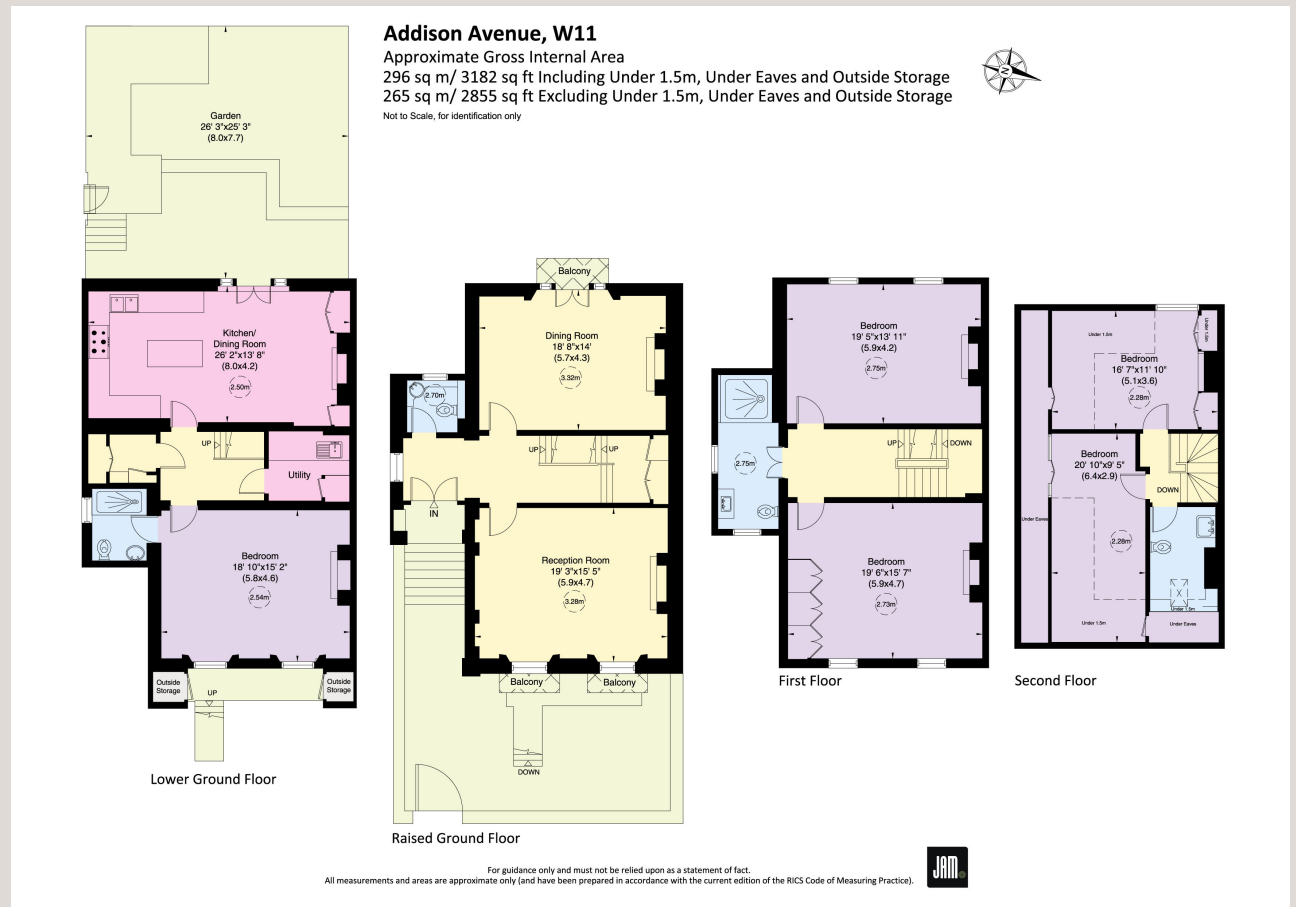
A SUPERB FAMILY HOUSE IN ONE OF THE PRETTIEST STREETS IN LONDON.

The accommodation comprises

- Drawing room & separate dining room
- Large kitchen / family room leading out to the west facing garden
- 5 double bedrooms
- 3 bathrooms
- Recently redecorated - inside and out

Terms

Rent £4,950 pw / £21,450 pcm
Furniture Unfurnished
Availability Mid June 2026
EPC Rating E
Council Tax Band H



**JOHN WILCOX
& Co.**
 020 7602 2352
www.johnwilcox.co.uk

For clarification purposes we wish to inform all interested parties that we have prepared these particulars as a general guide. We have not carried out a detailed survey nor tested the services, appliances and specific fittings. Room sizes should not be relied upon for carpets and furnishings