



33 Swan Court Banbury Road, Stratford-Upon-Avon

Offers Over **£70,000**

**SHELDON
BOSLEY
KNIGHT**

LAND AND
PROPERTY
PROFESSIONALS

33 Swan Court Banbury Road

Stratford-Upon-Avon, Stratford-Upon-Avon

Modern second floor retirement apartment in Swan Court, Stratford-upon-Avon. No chain. Double bedroom, lounge, kitchen, bathroom. Resident facilities, social events, great transport links.

Council Tax band: D

Tenure: Leasehold

EPC Energy Efficiency Rating: C

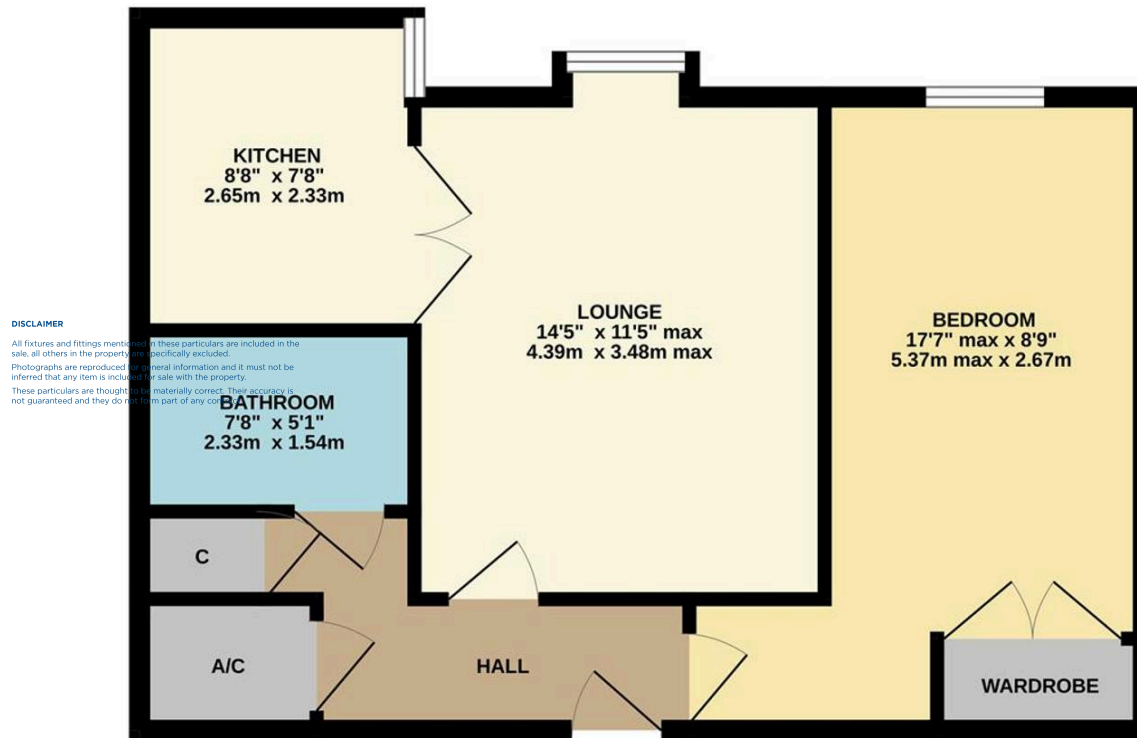
EPC Environmental Impact Rating: A

- Top Floor Apartment
- Lift Access
- Retirement Property With Minimum Age Of 55
- Lounge With Separate Kitchen
- Double Bedroom With Built In Wardrobe
- Residents Lounge & Laundry Room
- Development Manager
- Guest Suite
- Communal Gardens & Secure Parking
- No Onward Chain





SECOND FLOOR
513 sq.ft. (47.6 sq.m.) approx.



TOTAL FLOOR AREA : 513 sq.ft. (47.6 sq.m.) approx.
This floor plan is not to scale and is for guidance purposes only
Made with Metropix ©2025

Sheldon Bosley Knight Stratford-Upon-Avon

Sheldon Bosley Knight, 35-36 Rother Street - CV37 6LP

01789387887 · stratfordsales@sheldonbosleyknight.co.uk · www.sheldonbosleyknight.co.uk/

DISCLAIMER

All fixtures and fittings mentioned in these particulars are included in the sale, all others in the property are specifically excluded.

Photographs are reproduced for general information and it must not be inferred that any item is included for sale with the property.

These particulars are thought to be materially correct. Their accuracy is not guaranteed and they do not form part of any contract.