



# ASPIRE

— TO MOVE —



## Lodge Causeway, Bristol, BS16

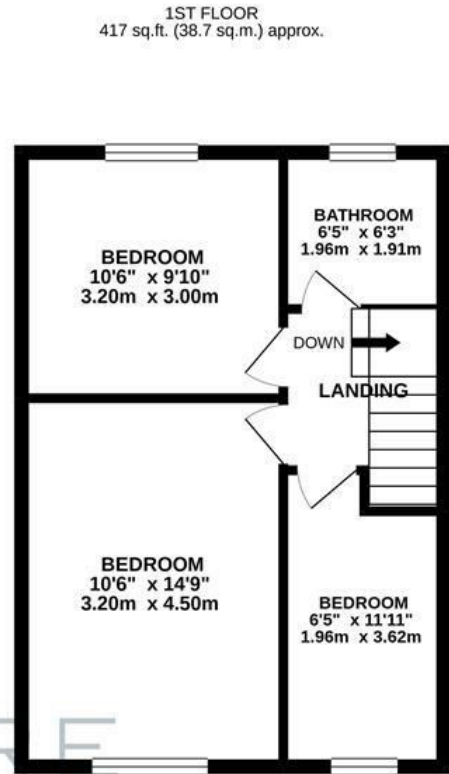
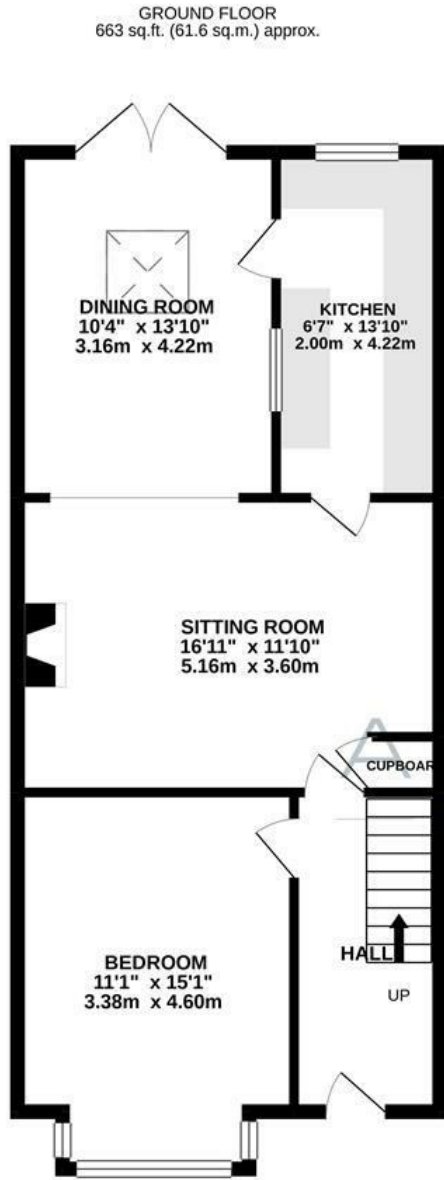
Video and physical viewings available. Four bedroom student property located in Fishponds, Bristol. Available from the 6th July.

The property is located in Fishponds and provides excellent access to local amenities and transport links.

- Video viewing available
- 12 month periodic contract
- Available from 6th July 2026
- Parking for 2 cars at rear
- Four double bedrooms
- Student property
- Furnished
- Council tax band B
- Holding deposit £415

**£1,799 PCM**

# Floor Plans

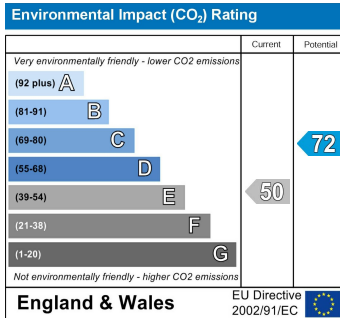
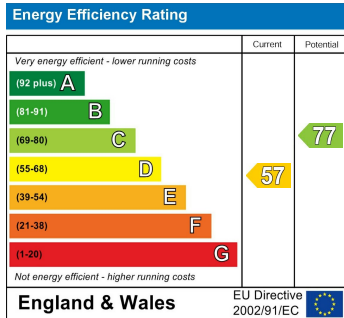


LODGE CAUSEWAY FISHPONDS BRISTOL BS16 3RA

TOTAL FLOOR AREA : 1079 sq.ft. (100.3 sq.m.) approx.

Whilst every attempt has been made to ensure the accuracy of the floorplan contained here, measurements of doors, windows, rooms and any other items are approximate and no responsibility is taken for any error, omission or mis-statement. This plan is for illustrative purposes only and should be used as such by any prospective purchaser. The services, systems and appliances shown have not been tested and no guarantee as to their operability or efficiency can be given.  
Made with Metropix ©2021

## Energy Performance Graph



These particulars, whilst believed to be accurate are set out as a general outline only for guidance and do not constitute any part of an offer or contract. Intending purchasers should not rely on them as statements of representation of fact, but must satisfy themselves by inspection or otherwise as to their accuracy. No person in this firm's employment has the authority to make or give any representation or warranty in respect of the property.