



www.jeffreygross.co.uk

CARDIFF

VALE

CAERPHILLY

BRISTOL



Clos Y Rheithordy

NELSON

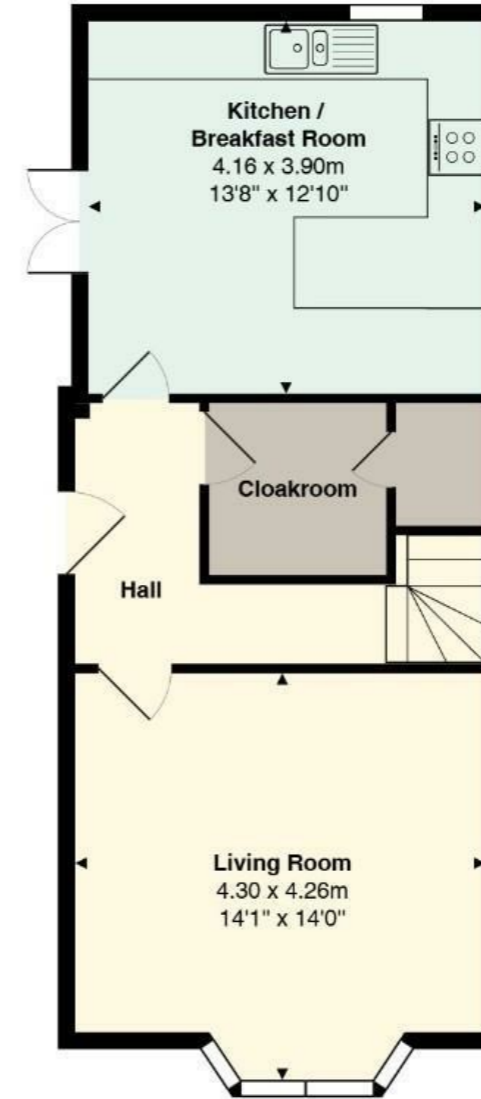


Comments by Mr Elliott Hooper-Nash



Property Specialist
Mr Elliott Hooper-Nash
 Director
 Elliott@jeffreygross.co.uk

Clos Y Rheithordy



Total Area: 90.8 m² ... 978 ft²

All measurements are approximate and for display purposes only

Stylish modern new builds in the heart of Nelson, excellent plot sizes, design and layout have been carefully considered for modern living.

Comments by the Homeowner





Clos Y Rheithordy

Nelson, Nelson, CF46 6HA

Asking Price

£290,000



3 Bedroom(s)



1 Bathroom(s)



1040.00 sq ft



Contact our
Llanishen Branch

02920 499680

Beautifully Appointed Three-Bedroom New-Build Home in a Sought-After Nelson Development

Located within the highly desirable Clos Y Rheithordy development on High Street, Nelson, this exceptional three-bedroom semi-detached home offers an exciting opportunity to purchase a stylish new-build property, completed in 2026.

Extending to approximately 1,040 sq ft, the accommodation has been thoughtfully designed to combine contemporary style with practical family living. The welcoming entrance hall leads to a spacious living room and an impressive open-plan kitchen/dining room, creating the perfect environment for both everyday living and entertaining.

Large windows throughout flood the property with natural light, creating a bright and spacious feel. The modern layout is complemented by quality finishes and a high standard of specification throughout.

To the first floor are three generously sized bedrooms, offering flexible accommodation for families, professionals, or those requiring additional workspace. A contemporary family bathroom completes the first-floor accommodation.

Externally, the property benefits from a private driveway providing off-road parking, together with low-maintenance outdoor space.

Ideally positioned within a well-connected and popular community, the property enjoys convenient access to local amenities, schools, transport links, and the surrounding countryside. Combining modern energy efficiency with the advantages of a brand-new home, this superb property is ready for immediate occupation and is sure to appeal to a wide range of buyers.

CARDIFF

VALE

CAERPHILLY

BRISTOL

www.jeffreygross.co.uk



Entrance Hallway

Living Room

Kitchen / Dining Room

Downstairs WC

To the first floor

Bedroom One

Bedroom Two

Bedroom three

Family Bathroom

Tenure

Freehold

Additional Information

SAP Rating - B83 - Excellent energy efficiency
10 Year Build warranty with Advantage
Timber frame construction

Council tax

TBC - Not rated yet

CARDIFF

VALE

CAERPHILLY

BRISTOL

www.jeffreygross.co.uk





Energy Efficiency Rating		Current	Potential
Very energy efficient - lower running costs			
(92 plus) A			
(81-91) B			
(69-80) C			
(55-68) D			
(39-54) E			
(21-38) F			
(1-20) G			
Not energy efficient - higher running costs			
England & Wales		EU Directive 2002/91/EC 