



## HALLAM STREET, LONDON, W1W

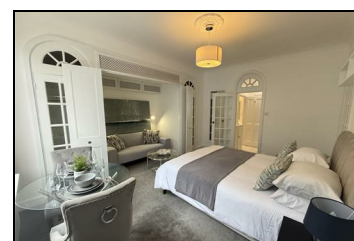
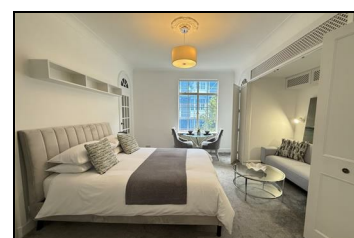
**£1,900 PER MONTH**

A beautifully newly decorated studio apartment with porter service, set on the second floor of this attractive and well-maintained building in the heart of Marylebone. The property offers a bright and spacious studio room, a separate fitted kitchen, and a modern bathroom. Heating and hot water are included in the rent, and residents further benefit from lift access, providing both comfort and convenience. Offered part furnished.

Available immediately.

Ideally located within easy walking distance of Regent's Park, the property is superbly positioned close to Great Portland Street and Marylebone Road, surrounded by an excellent choice of cafés, restaurants, boutiques, and local amenities. Outstanding transport connections are available nearby, with both Regent's Park and Great Portland Street Underground stations just moments away.

- Studio Flat
- Separate Kitchen
- Bathroom
- Newly Decorated
- Prime Position
- Lift Facilities



Energy Efficiency Rating		Environmental Impact (CO <sub>2</sub> ) Rating	
Current	Potential	Current	Potential
75	81		
<small>Energy Efficiency: Lower rating cost less energy to heat the property. A higher rating means the property is more energy efficient. Higher ratings cost less energy to heat the property.</small>		<small>Environmental Impact: Lower CO<sub>2</sub> emissions are better for the environment. A higher rating means the property has a lower environmental impact. Higher ratings have a lower environmental impact.</small>	
<small>UK Energy Efficient - Higher ratings cost less energy to heat the property.</small>		<small>UK Environmentally Friendly - Higher CO<sub>2</sub> emissions are worse for the environment.</small>	
England & Wales		England & Wales	
EU Directive 2002/91/EC		EU Directive 2002/91/EC	