

GUIDE PRICE

£800,000

Cumberland Road

, BR2 0PQ

PROPERTY SUMMARY

GUIDE PRICE £800,000-£850,000 Sinclair Hammelton are delighted to present to the market this charming four bedroom detached home, offered chain free and situated on a desirable residential road in Shortlands. Ideally located just 0.5 miles from Bromley South station, providing fast services to London Victoria, and 0.6 miles from Shortlands station, the property is perfectly positioned for commuters. This family home is also within close proximity to the highly regarded Highfield Primary School, rated Outstanding by Ofsted, and just a short distance from Bromley High Street, which offers a wide selection of shops, restaurants and bars. The ground floor comprises of a welcoming entrance hallway, large shower room/W.C, a utility room and a spacious open-plan living and dining area that is filled with natural light. There is also a separate kitchen, offering further scope for modernisation or extension, subject to the usual consents. Upstairs, the property offers three well-proportioned double bedrooms, a good sized single bedroom and a family bathroom with a separate toilet. Externally, there is a self contained office space/studio with good natural light, perfect for those who work from home. It is accessible from under the car port at the side of the house or from the rear garden. The home boasts a generous and mature rear garden and off-street parking to the front. EPC: D

COUNCIL TAX - G
Construction - Traditional

4



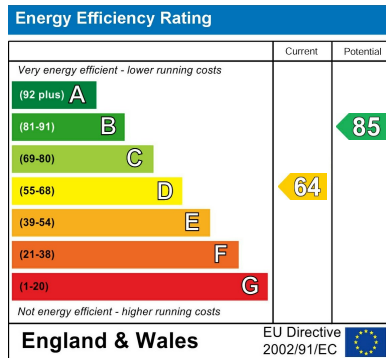
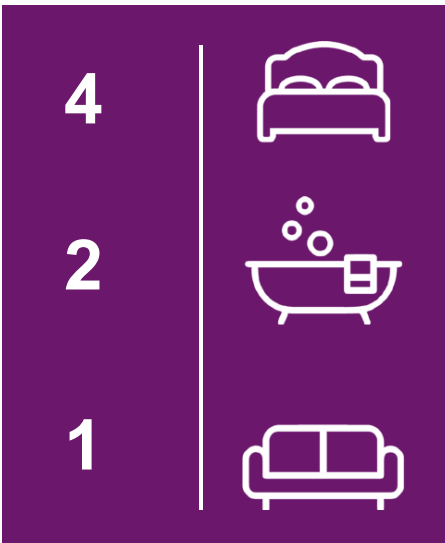
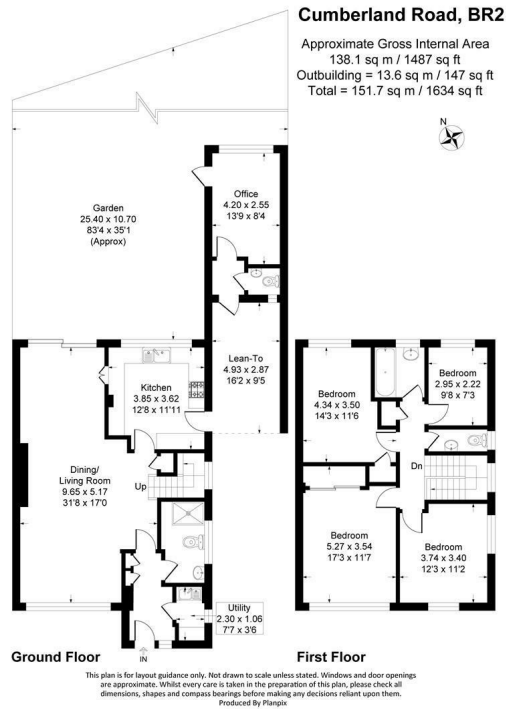
2



1







EPC RATING: D COUNCIL TAX BAND: G

Agents Note: Whilst every care has been taken to prepare these particulars, they are for guidance purposes only. All measurements are approximate and are for general guidance purposes only and whilst every care has been taken to ensure their accuracy, they should not be relied upon and potential buyers/tenants are advised to recheck the measurements

Sinclair **Hammelton**

OFFICE ADDRESS
23 High Street
Bromley
Kent
BR1 1LG

OFFICE DETAILS
0208 464 5566
info@sinclairhammelton.co.uk