



Guide Price
£300,000

Freehold

3x  2x  1x 

**Rock Road,
Sittingbourne, Kent,
ME10**

OVER 60?

Secure this property
for up to **59% less!**

Wards
Helping you move forwards



Main features

- Terraced house in a central town location
- Close walking distance to local amenities
- Main line train station close by
- Ideal first time buy or investment opportunity
- Add your own stamp to this home

Accommodation

GROUND FLOOR

Hallway

Lounge: 13'8 x 9'8 (4.17m x 2.95m)

Dining Area: 12'5 x 10'3 (3.79m x 3.13m)

Kitchen: 18'8 x 8'4 (5.69m x 2.54m)

Shower Room

Lean to: 16'8 x 4'3 (5.08m x 1.30m)

FIRST FLOOR

Bedroom 1: 13'5 x 11'4 (4.09m x 3.46m)

Bedroom 2: 12'4 x 7'9 (3.76m x 2.36m)

Bedroom 3: 8'8 x 8'2 (2.64m x 2.49m)

Wet Room

SECOND FLOOR

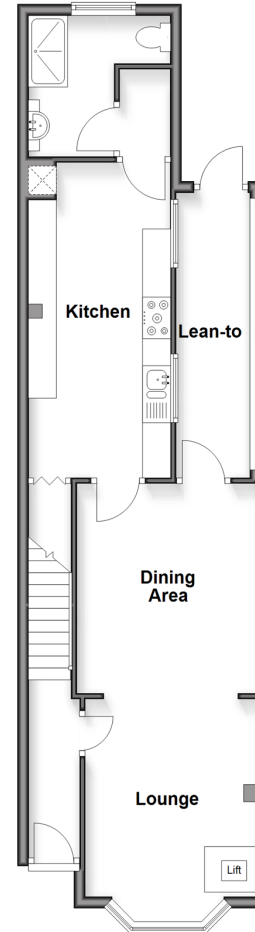
Loft room: 11'11 x 11'7 (3.63m x 3.53m)

OUTSIDE

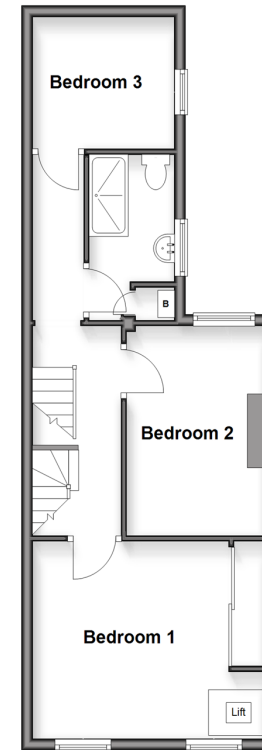
Front Garden

Rear Garden

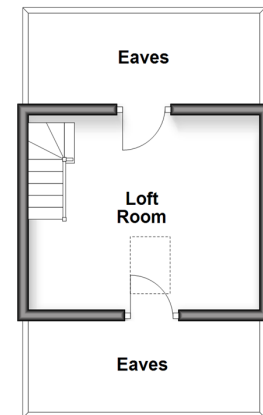
Ground Floor
Approx. 57.7 sq. metres (621.4 sq. feet)



First Floor
Approx. 43.9 sq. metres (472.7 sq. feet)



Second Floor
Approx. 14.2 sq. metres (152.6 sq. feet)



Call Sittingbourne - 01795 427272 ■ wardsofkent.co.uk

■ Through a Homewise Home For Life Plan people aged 60+ can secure this property for up to 59% less, by purchasing a Lifetime Lease



11728266/20260319/MC1/MC1