



79 Greenfields, Wick, Littlehampton, BN17 7HF

£250,000

- Spacious Terrace House
- 15'9" Lounge with French Doors Overlooking Rear Garden
- 13' 8" x 8' 11" Master Bedroom
- Viewing Highly Recommended to Appreciate Size of This Lovely Home
- Three Bedrooms
- Refitted 16'7" Kitchen/Diner
- 12' 8" x 8' 11" With Fitted Wardrobes
- Westerly Rear Garden
- Front Porch & Ground Floor WC
- Modern Refitted White Bathroom Suite

79 Greenfields, Littlehampton BN17 7HF

Spacious Three-Bedroom House with Westerly Rear Garden

This well proportioned home offers generous living space ideal for modern family life. The property welcomes you via a front porch, leading to a refitted 16'7 kitchen/diner, offering ample space for cooking, dining, and entertaining. To the rear, a bright 15'9 lounge, featuring French doors that open directly onto the westerly-facing rear garden – perfect for enjoying afternoon and evening sun. A convenient ground floor WC completes the downstairs accommodation.

Upstairs, there are three well-proportioned bedrooms, including a generous master bedroom measuring 13'8" x 8'11", and a second double 12'8" x 8'11" with fitted wardrobes. The accommodation is finished with a modern refitted white bathroom suite, creating a clean and contemporary feel.

Viewing is highly recommended to appreciate the size and overall quality on offer.



Council Tax Band: B

Tenure: Freehold



KITCHEN/DINER

16' 7" x 9' 9"

LOUNGE

15' 9" x 12' 6"

BEDROOM ONE

13' 8" x 8' 11"

BEDROOM TWO

12' 8" x 8' 11"

BEDROOM THREE

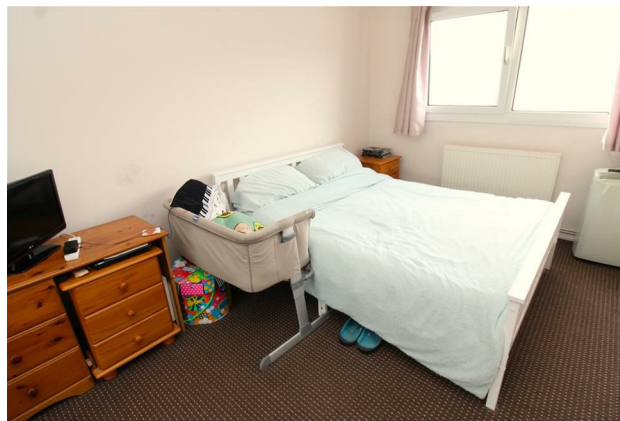
9' 5" x 6' 5"

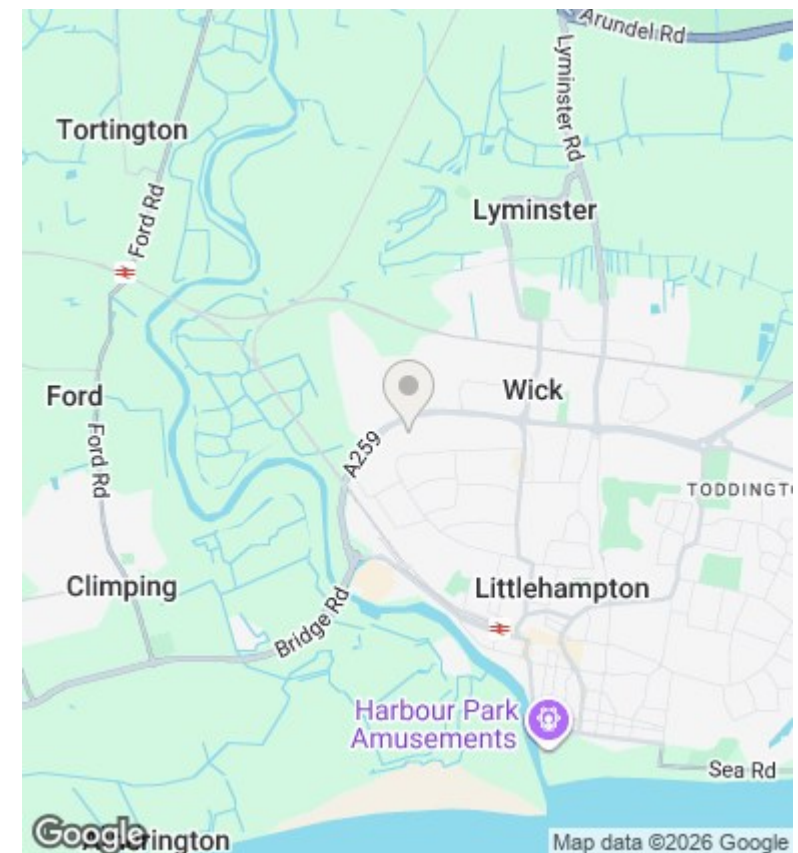
FAMILY BATHROOM

8' 49 x 6' 35

GROUND FLOOR W/C

4' 7" x 2' 5"





Energy Efficiency Rating		
	Current	Potential
Very energy efficient - lower running costs		
(92 plus) A		
(81-91) B		
(69-80) C		
(55-68) D		
(39-54) E		
(21-38) F		
(1-20) G		
Not energy efficient - higher running costs		
England & Wales		EU Directive 2002/91/EC

These particulars are produced in good faith and are believed to be correct, but their accuracy is in no way guaranteed and they do not form part of a contract. We have not carried out a survey, nor tested the services, appliances and specified fittings. Room measurements are approximate.