



Marshalsea Road, SE1

£950,000 (Offers in excess of)

A genuinely unique opportunity to create a breathtaking duplex penthouse apartment, in the heart of the historic and thriving area of Borough.

The property will be listed within the Allsop Auction on Thursday 28th May, 2026 - LOT 112

Situated on the top (third floor) of a period warehouse conversion overlooking Mint Street Park; the current owner has exercised their 'Air Rights' and gained planning permission to extend the current property by an additional storey, creating potential for a four bedroom, three bathroom, split-level top floor apartment, generating almost 2,500 sq. ft of internal space.

Marshalsea Road is a thoroughfare in Southwark that is located in close proximity to Borough Station (Northern Line) with services to London Bridge with its connections to Bank (in the City of London) and Canary Wharf financial district. Close by is the highly regarded Joe's Kitchen and the popular Lord Clyde pub, renowned for its friendly atmosphere with numerous amenities nearby; including world famous Borough Market, the South Bank and Flat Iron Square. Marshalsea Road is surrounded by an enviable rolecall of parks and green spaces whilst being within easy access to everything London has to offer and located within walking distance from the River Thames.

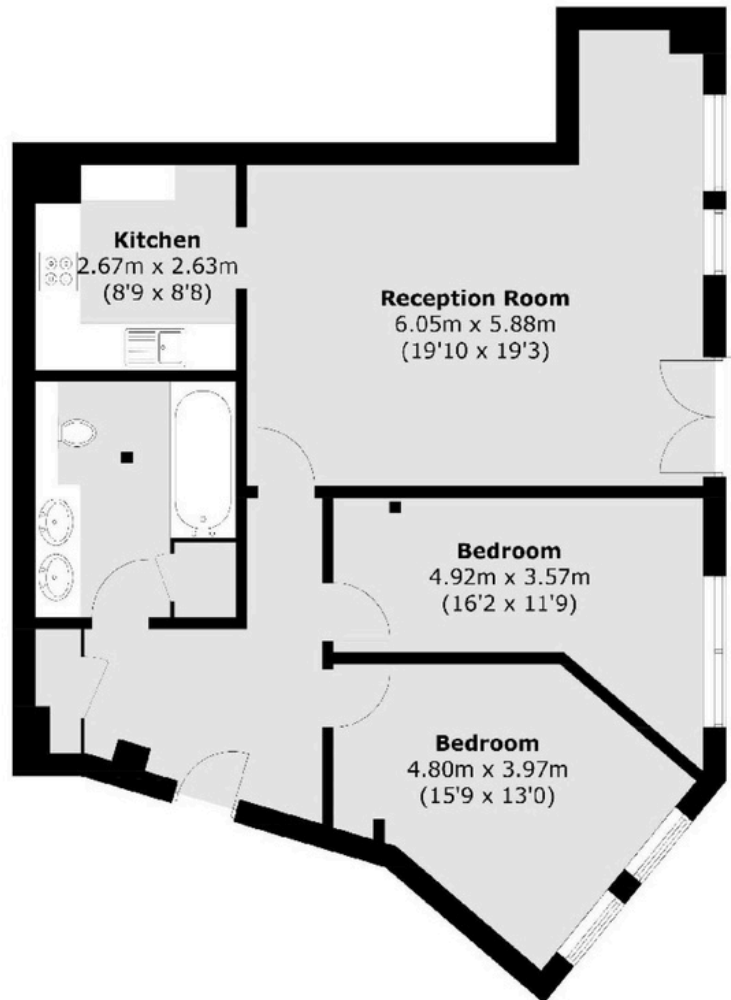
The area is steeped in history with Southwark Cathedral, Shakespeare's Globe Theatre, Tower Bridge and the Tower of London all within walking distance.

Tenure - Leasehold HM Land Registry Title Number TGL567853

Features

- Residential development opportunity
- Planning permission granted
- Proposed features 2,495 sq ft of internal living space
- 1,449 sq ft roof terrace
- Breathtaking views of London's city skyline
- Opposite Mint Street Park
- No onward chain

Flat 7, 24 Marshalsea Road, Borough, London SE1 1HF
Existing Floor Plan



Total area (approx.): 80.1 sq. m (862.2 sq. ft)



Registered office: Mayfair Showroom, 66 Grosvenor Street, London, W1K 3JL.
Dexters London Limited, Company Registration Number 04160511

dexters.co.uk

Property sales, lettings and management. Development and investment advisors. Specialist residential Chartered Surveyors.

Flat 7, 24 Marshalsea Road, Borough, London SE1 1HF Proposed Floor Plan

