



**10 Knights Close, Windsor, SL4 5QR**  
**£635,000**

 **HORLER**

## 10 Knights Close, Windsor, SL4 5QR

Being offered to the market for the very first time since it was built, this beautifully presented four bedroom family home occupies an exceptionally large and truly unique plot in the heart of West Windsor, presenting a rare opportunity to acquire a property of remarkable space, privacy and potential in one of the area's most sought after locations.



### **Property Sumamry**

Located in the incredibly popular Knights Close, Windsor, this delightful family home has been lovingly owned since its construction in the 1960s. Occupying the most spacious plot on the road, this property presents an exceptional opportunity for a new family to enjoy extensive living accommodation in a highly sought-after location.

Convenience is at the heart of this residence, as it is ideally situated near local shops, reputable schools, and is en route to the vibrant Windsor town centre. Despite its accessibility, the home enjoys a peaceful and secluded position at the end of a quiet cul-de-sac, providing a perfect retreat for family life.

The property has been meticulously maintained by its original owners over the years, ensuring that the living spaces are pristine and ready for immediate enjoyment. With heaps of potential for extension, this home offers the chance to personalise and expand according to your family's needs.

Offered with no onward chain, this is a rare opportunity to acquire a property that has not been sold since it was first built. This summer, seize the chance to secure one of West Windsor's dream homes, complete with a superb garden and ample outdoor space for relaxation and recreation. Don't miss out on this exceptional offering; it truly is a gem waiting to be discovered.

### **Council Tax.**

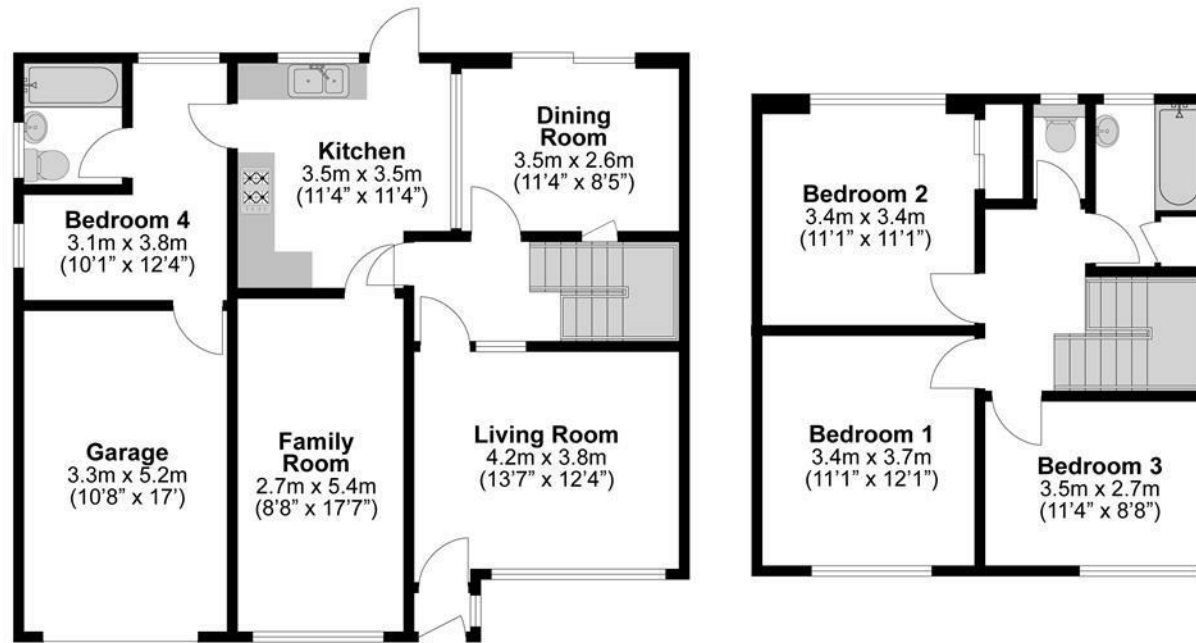
Band E

### **Legal Note.**

\*\*\*Although these particulars are thought to be materially correct, their accuracy cannot be guaranteed and they do not form part of any contract\*\*\*.







**Illustrations are for identification purposes only,  
measurements are approximate, not to scale.**