



4, Eden Close, Bexley DA5 2EH  
Asking Price £415,000



A well presented and extended two double bedroom semi detached bungalow positioned on a quiet road within the highly desirable Joydens Wood area. The location offers excellent access to a range of popular local amenities including well regarded schools, shops, Joydens Wood Nature Reserve, Birchwood Park Country Club, bus routes, and wider transport links. The accommodation comprises an entrance hall, a modern shower room, two well proportioned bedrooms, a spacious living room, and a fitted kitchen/diner, creating a practical and comfortable layout for everyday living. Externally, the property benefits from both front and rear gardens, providing attractive outdoor space, along with the advantages of double glazing and gas central heating. Viewing is highly recommended for buyers seeking a well located bungalow with generous accommodation in this ever popular setting.

Local Authority: Dartford  
Council Tax Band: D



Energy Efficiency Rating		
	Current	Potential
<i>Very energy efficient - lower running costs</i>		
(92 plus) <b>A</b>		
(81-91) <b>B</b>		
(69-80) <b>C</b>		
(55-68) <b>D</b>		64
(39-54) <b>E</b>		
(21-38) <b>F</b>		
(1-20) <b>G</b>		
<i>Not energy efficient - higher running costs</i>		
England & Wales		EU Directive 2002/91/EC

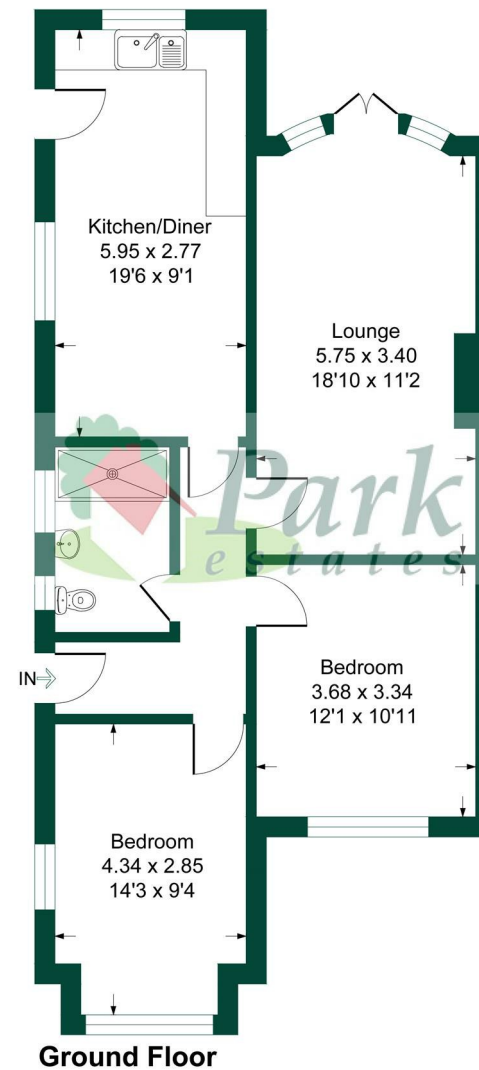
# 01322 553322

60-62 High Street, Bexley, Kent DA5 1AH

bexley@parkestates.co.uk  
www.parkestates.co.uk

## Eden Close

Approximate Gross Internal Area = 73.3 sq m / 789 sq ft



This plan is for layout guidance only. Not drawn to scale unless stated. Windows and door openings are approximate. Whilst every care is taken in the preparation of this plan, please check all dimensions, shapes and compass bearings before making any decisions reliant upon them.  
Produced By Planpix

Every care has been taken with the preparation of details, but accuracy is in no way guaranteed. These particulars do not constitute a contract and are issued and accepted on the express understanding that all negotiations will be conducted through Park Estates. The seller does not make or give, nor do we or our employees have any authority to give a representation or warranty in relation to the property. Please contact this office before viewing the property. If there is any point which is of particular importance to you, we will be pleased to check the information for you and confirm that the property remains available. This is particularly important if you are contemplating travelling some distance to view the property. We would strongly recommend that all the information that we provide about the property is verified by yourself on inspection and also by your conveyancer, especially where statements have been made by us to the effect that the information provided by us has not been verified.