



Kenworthy Road, E9

£550,000

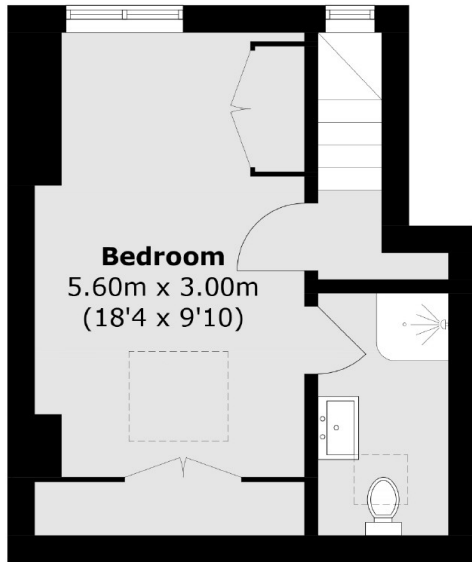
A three bedroom Victorian conversion within close proximity to Victoria Park. The split level flat measures over 840 sq ft and is in excellent condition throughout. It benefits from having an open plan kitchen, two bathrooms; one en-suite, double glazed windows and a long lease. It is being sold chain free.

Kenworthy Road is under a quarter of a mile from Victoria Park and Chatsworth Road with weekend markets, independent shops, cafés and restaurants. The property is half a mile from Homerton Overground and just over half a mile from Hackney Wick station. The Hackney Marshes & Victoria Park are close by providing many opportunities for leisure & outdoor recreation.

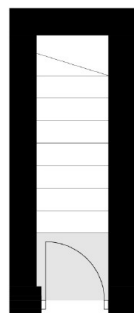
Features

- Three Bedrooms
- Two Bathrooms
- Victorian Conversion
- Split Level
- Chain Free
- Victoria Park

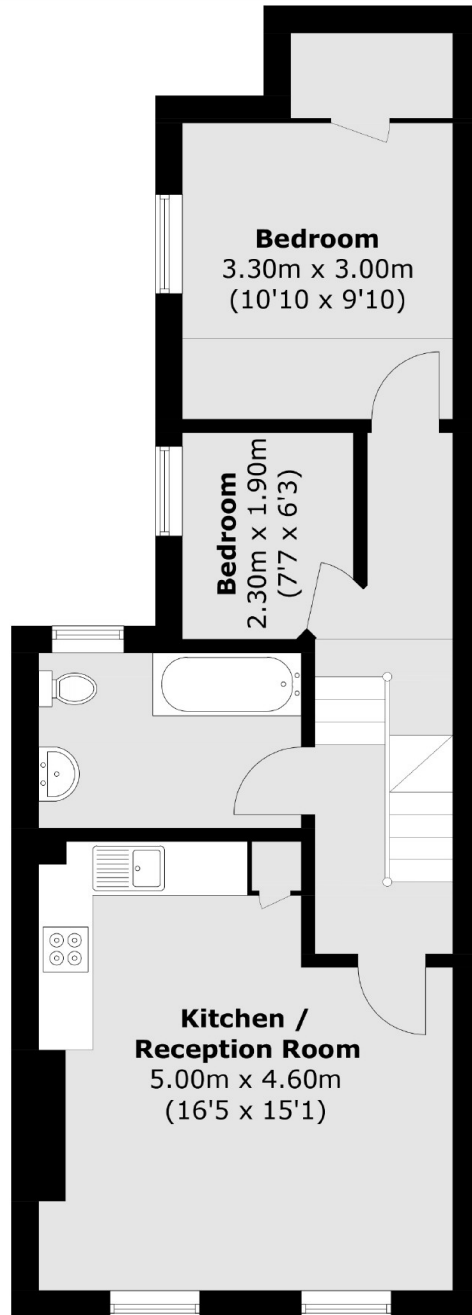
Kenworthy Road,
London, E9



Second Floor



Ground Floor



First Floor

Total area (approx.): 78.4 sq. m (843.8 sq. ft)