



- Prime development site approximately 0.368 hectares (0.909 acres)
- Outline planning permission for B2 and B8 industrial development
- Proposed gross internal floor area of 1,068 sq. m. (11,496 sq. ft.)
- Prominent position within established Queens Meadow Business Park
- Three existing wind turbines within the site boundary
- Excellent access to A689, A19 and regional transport links
- Ideal opportunity for developers, investors and owner occupiers

**Land Rear of Deepdale Solutions,  
Queens Meadow Business Park,  
Venture Court, Hartlepool TS25 5TE**

**Auction Guide Price £375,000 +**

For Sale by Auction. Live Online Auction, bidding starts

Thursday 30<sup>th</sup> July 2026. T's & C's apply.

see website: [agentspropertyauction.com](https://agentspropertyauction.com)

**Tenure: Freehold (Part Leasehold)**

**RMS** | Rook  
Matthews  
Sayer



### Location

The development site occupies a prominent position to the rear of Deepdale Solutions within the well-established Queens Meadow Business Park, one of Hartlepool's premier commercial and industrial locations. The business park is situated approximately two miles south-west of Hartlepool town centre and has become a recognised destination for manufacturing, engineering, logistics and business occupiers.

Queens Meadow Business Park benefits from excellent road communications, with immediate access to the A689, providing direct links to the A19, one of the region's principal north-south arterial routes. The A19 offers convenient connections to Middlesbrough, Stockton-on-Tees, Sunderland and the wider North East motorway network, including the A1(M). The Port of Hartlepool, Hartlepool railway station and Teesside International Airport are also within easy reach, enhancing the site's appeal for industrial and commercial occupiers.

The surrounding estate is home to a wide range of established businesses, modern industrial units and the Hartlepool Innovation Centre, creating a thriving commercial environment that continues to attract investment. The business park also benefits from landscaped surroundings and an established infrastructure, making it a highly desirable location for business growth.

### Description

An excellent opportunity to acquire a prime development site extending to approximately 0.368 hectares (0.909 acres), situated within the well-established Queens Meadow Business Park, one of Hartlepool's premier commercial and industrial locations.

[www.rookmatthewssayer.co.uk](http://www.rookmatthewssayer.co.uk)

T: 0191 212 0000 E: [commercial@rmsestateagents.co.uk](mailto:commercial@rmsestateagents.co.uk)

**RMS** | Rook  
Matthews  
Sayer

The site benefits from outline planning permission (all matters reserved) for the development of B2 (General Industrial) and B8 (Storage & Distribution) accommodation with a proposed gross internal floor area of 1,068 sq. m. (11,496 sq. ft.), offering an exceptional opportunity for developers, investors or owner occupiers to deliver a high-quality industrial scheme.

Planning permission was granted under Planning Reference: H/2022/0208, providing a strong platform for future development. The site occupies a highly visible position with direct access from Venture Court and is surrounded by a number of established commercial occupiers within this successful business park.

The predominantly level site is securely enclosed and offers an ideal blank canvas for redevelopment. Existing access is available from Venture Court, with mains services understood to be available nearby, subject to the usual statutory enquiries. There are three existing wind turbines located within the site boundary reflecting the site's established association with renewable energy infrastructure. Subject to the necessary consents and technical investigations, purchasers may wish to explore the potential for their continued use, refurbishment or removal as part of any future development proposals.

This represents a rare opportunity to acquire a consented industrial development site within an established and expanding business location where the demand for modern industrial accommodation continues to remain strong.

**Site Area**

0.368 hectares (0.909 acres)





### **Proposed Development**

Outline planning permission with all matters reserved for B2 & B8 uses of the land with a floor space of 1,068 sq. m. (11,496 sq. ft.).

### **Planning Reference Number**

H/2022/0208

### **Tenure**

Freehold – Title Number CE243980 (Outlined in Red)

Leasehold (194 years 3 months (less 2 days) from 5 March 2007) - Title Number CE194498 (Outlined in Blue)

### **Auction**

Live online auction, bidding starts Thursday 30<sup>th</sup> July 2026, terms and conditions apply, see website [agentspropertyauction.com](https://agentspropertyauction.com)

### **Auction Guide Price**

£375,000 +

### **Auctioneer's Note**

Interested parties are advised to make their own enquiries with the Local Planning Authority regarding any proposed future use or redevelopment.

[www.rookmatthewssayer.co.uk](http://www.rookmatthewssayer.co.uk)

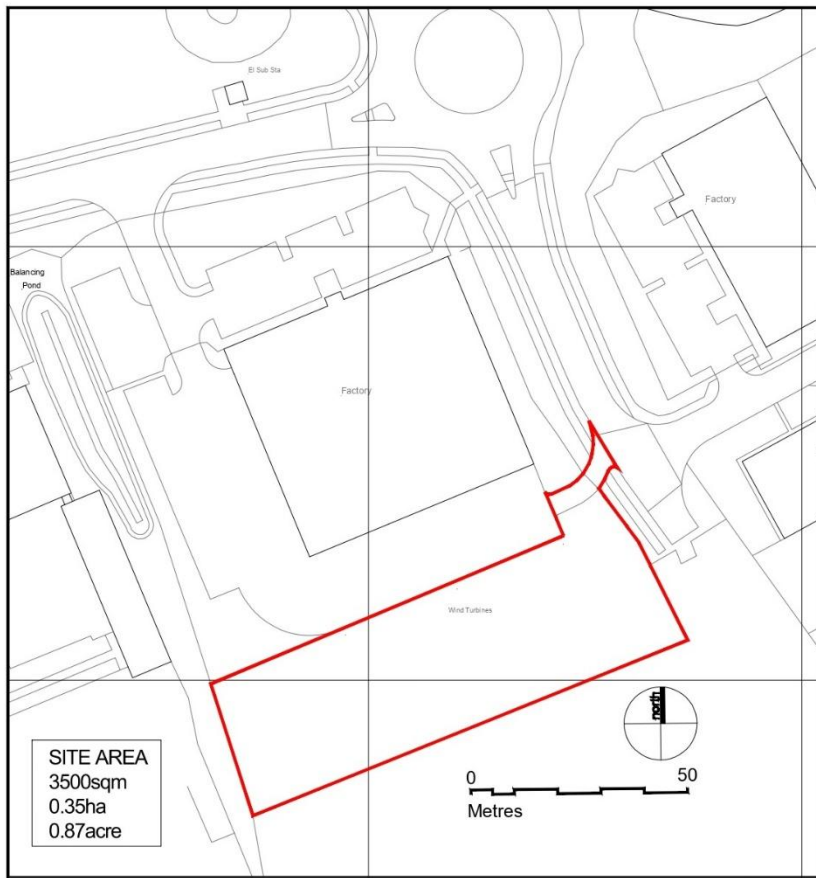
T: 0191 212 0000 E: [commercial@rmsestateagents.co.uk](mailto:commercial@rmsestateagents.co.uk)

**RMS** | Rook  
Matthews  
Sayer

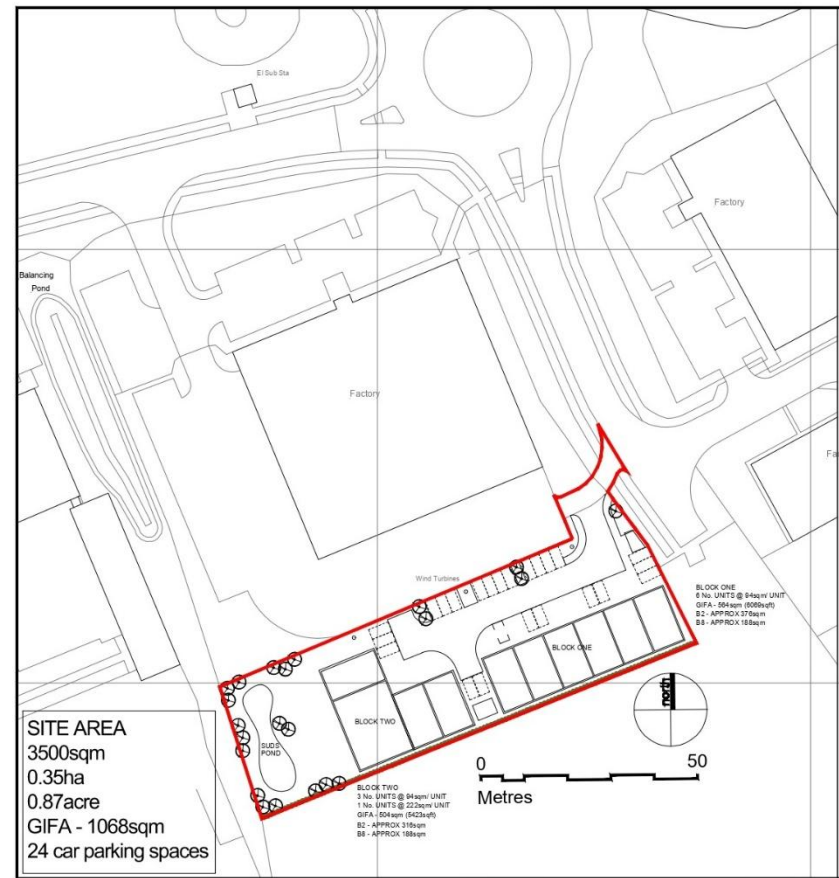
### Information Notice

1. Particulars above are not a contract or offer or part of one. You should not rely on statements by Rook Matthews Sayer in the particulars or by word of mouth or in writing as being factually accurate about the property/business, its condition or its value.  
Rook Matthews Sayer has no authority to make any representations about the property, and accordingly any information given is entirely without responsibility. Any reference to alterations to, or use any part of the property does not mean that any necessary planning, building regulations or other consent has been obtained. A buyer or lessee must find out by inspection or in other ways that these matters have been properly dealt with and that all information is correct.
2. The photographs show only parts of the property as they appeared at the time taken.
3. Any areas, measurements and distances given are approximate only.
4. Each auction property is offered at a guide price and is also subject to a reserve price. The guide price is the level where the bidding will commence. The reserve price is the seller's minimum acceptable price at auction and the figure below which the auctioneer cannot sell. The reserve price, which may be up to 10% higher than the guide price, is not disclosed and remains confidential between the seller and the auctioneer. Both the guide price and the reserve price can be subject to change up to and including the day of the auction. The successful buyer pays a £2,000 +VAT (total £2,400) Auction Administration Fee. Joint Agents: The Agents Property Auction Ltd. Tel 01661 831360 Terms and conditions apply see: [agentspropertyauction.com](http://agentspropertyauction.com).

Ref I492 (Version 2)  
Prepared 03<sup>rd</sup> July 2026



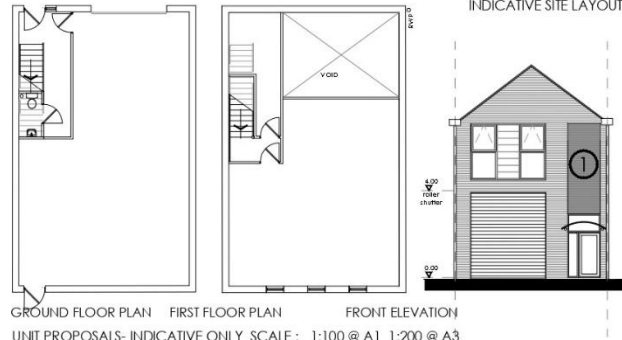
EXISTING SITE PLAN SCALE: 1:1000 @ A3 1:500 @ A1



INDICATIVE SITE LAYOUT SCALE: 1:1000 @ A3 1:500 @ A1

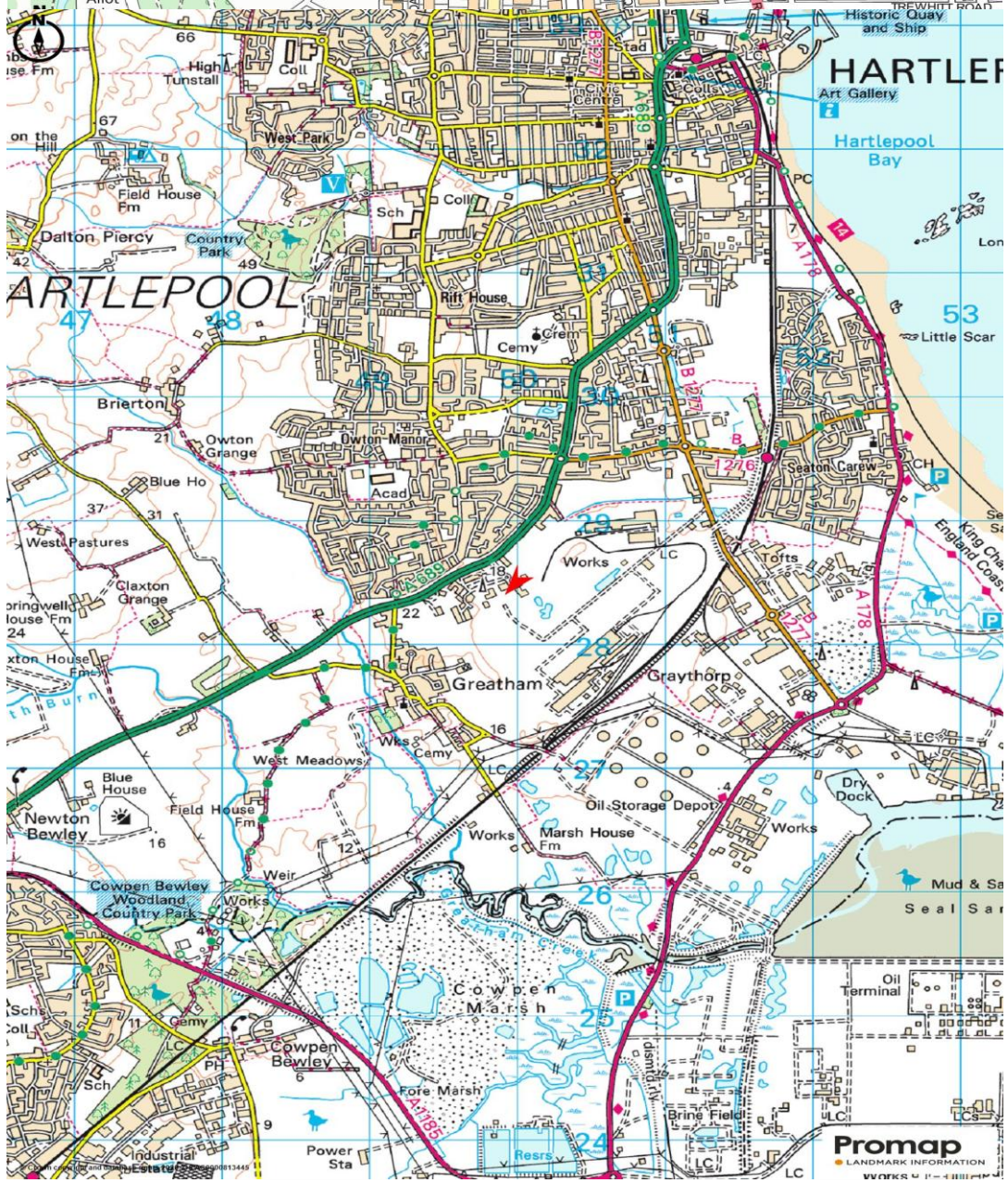
**NOTES:**

- 1. This drawing is copyright of Rg Architects Ltd. No part of this drawing may be reproduced in any material form without the written permission of Rg Architects Ltd. Knowledge of the drawing of its contents and its location in a computer system may result in some risk claim for damages and/or criminal prosecution.
- 2. All dimensions to be verified on site prior to any start of site works being commenced.
- 3. Any discrepancies to be reported to the Architect BEFORE any works begin.
- 4. This drawing must be read in conjunction with relevant or subsequent and specialist drawings.
- 5. This drawing must be read in conjunction with the drawings specified.
- 6. Rg Architects Ltd accepts no liability to third parties arising out of the use of this drawing or its production.



UNIT PROPOSALS- INDICATIVE ONLY SCALE: 1:100 @ A1 1:200 @ A3

- D 09/09/21    RED LINE AMENDED
- C 21/09/21    RED LINE AMENDED
- B 12/09/21    PROPOSED LAYOUT REVIEWED
- A 12/10/21    PROPOSED LAYOUT REVIEWED



[www.rookmatthewssayer.co.uk](http://www.rookmatthewssayer.co.uk)

T: 0191 212 0000 E: [commercial@rmsestateagents.co.uk](mailto:commercial@rmsestateagents.co.uk)

**RMS** | Rook  
Matthews  
Sayer

