




4 Victoria Place,
£425,000

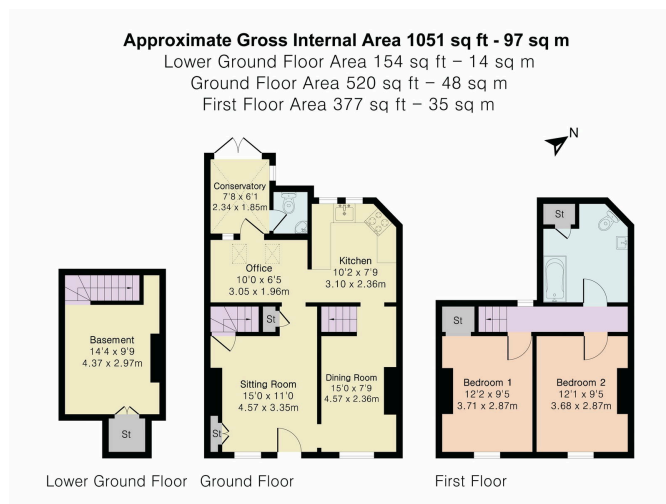
 2  1  1



- Two-bedroom terraced townhouse
- Beautifully presented throughout
- Three reception rooms
- Conservatory with garden access
- New flooring throughout
- Sought-after Fairview location in Cheltenham
- Converted basement living space (renovated 2025)
- Separate study area off the kitchen
- Modern fitted kitchen
- Enclosed rear garden with patio seating area



A beautifully presented two-bedroom terraced home in the highly desirable Fairview area of Cheltenham, offering versatile accommodation across three floors. Highlights include a 2025 converted basement living space, open-plan dining room, modern kitchen with adjoining study area, conservatory, and a private rear garden.



 PINK PLAN

Floor plan produced in accordance with RICS Property Measurement 2nd Edition. Although Pink Plan Ltd ensures the highest level of accuracy, measurements of doors, windows and rooms are approximate and no responsibility is taken for error, omission or misstatement. These plans are for representation purposes only and no guarantee is given on the total square footage of the property within this plan. The figure form is for initial guidance only and should not be relied on as a basis of valuation.



Elliot Oliver Sales

101 Promenade, Cheltenham GL50 1NW

01242 321091

www.eosales.co.uk

