

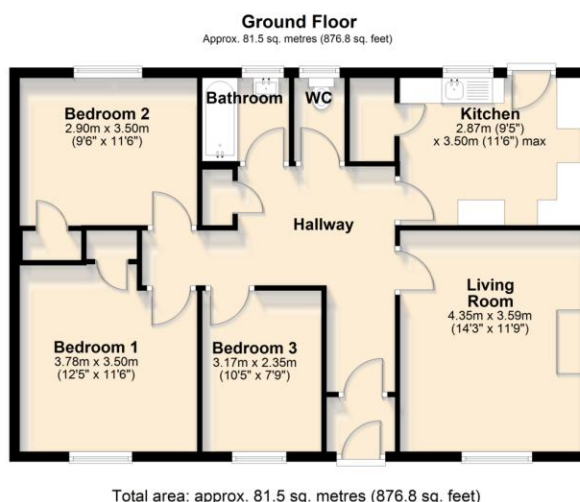


**2 Mount Pleasant, Higher
Contour Road, Kingswear,
Dartmouth, TQ6 0DB**


MILLINGTON TUNNICLIFF

2 Mount Pleasant, Higher Contour Road, Kingswear, Dartmouth, TQ6 0DB

FLOORPLAN



3



1



1



B



52



CONTACT

19 Fore Street, Ivybridge,
Devon, PL21 9AB

EMAIL

info@millingtontunnicliff.co.uk

TEL

01752 896020

www.millingtontunnicliff.co.uk

Guide Price £120,000

SUMMARY

A spacious 3 bedroom purpose built ground floor flat set in this elevated position with westerly facing aspect looking towards Dartmouth. The property is of a conventional build with accommodation comprising of an entrance hall, living room, the 3 bedrooms, bathroom and separate WC. The flat is Upvc double glazed and has electric heating. External there is a communal courtyard at rear with brick built store. No chain. EPC E 52.

3 Bedroom Ground Floor Flat | Purpose Built | Spacious Living Room | Westerly Aspect With Views Towards Dartmouth | Upvc Double Glazing | Electric Heating | Communal Courtyard And Brick Store | No Chain | EPC E 52 | Popular South Hams Village