

CHURCHILL
estates

Council: Waltham Forest | Council Tax Band: D | Floor Area: 467.48 sq ft

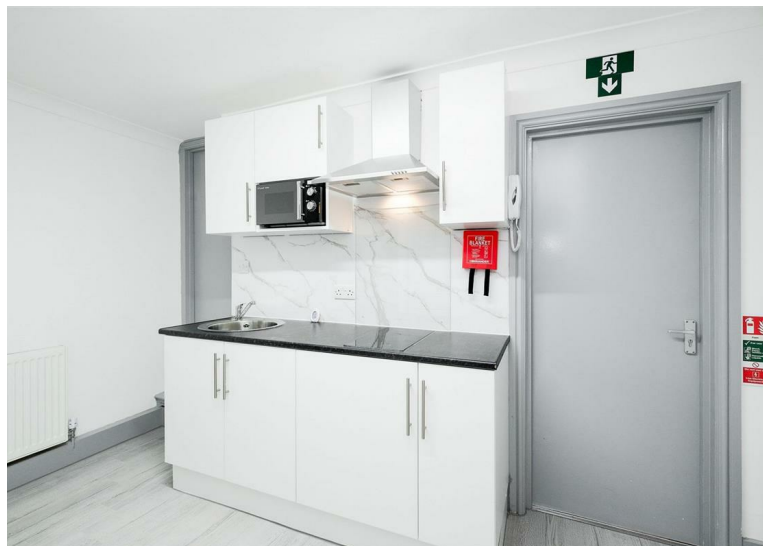
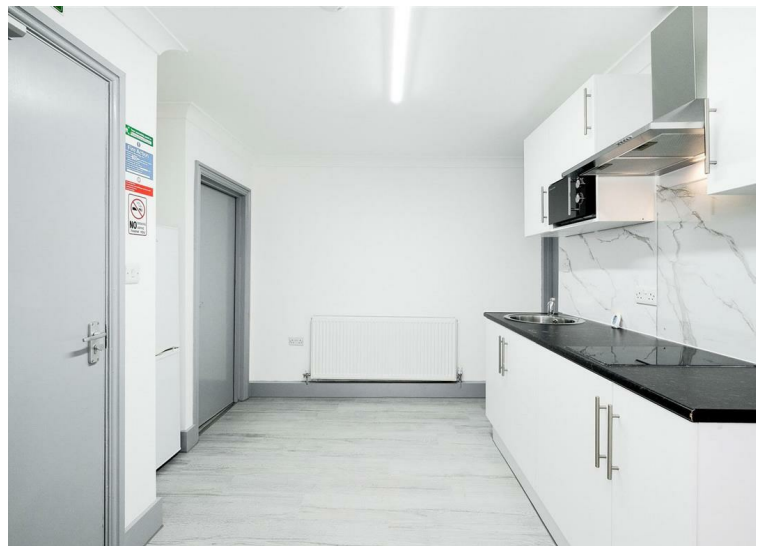
Folkestone Road, Walthamstow, E17 9SD
£1,750 Per Calendar Month

Bedrooms: 2 | Reception Rooms: 1 | Bathrooms: 1

Energy Efficiency Rating		Current	Potential
Very energy efficient - lower running costs			
(92 plus) A			
(81-91) B			
(69-80) C			
(55-68) D			
(39-54) E			
(21-38) F			
(1-20) G			
Not energy efficient - higher running costs			
England & Wales		71	80
EU Directive 2002/91/EC			

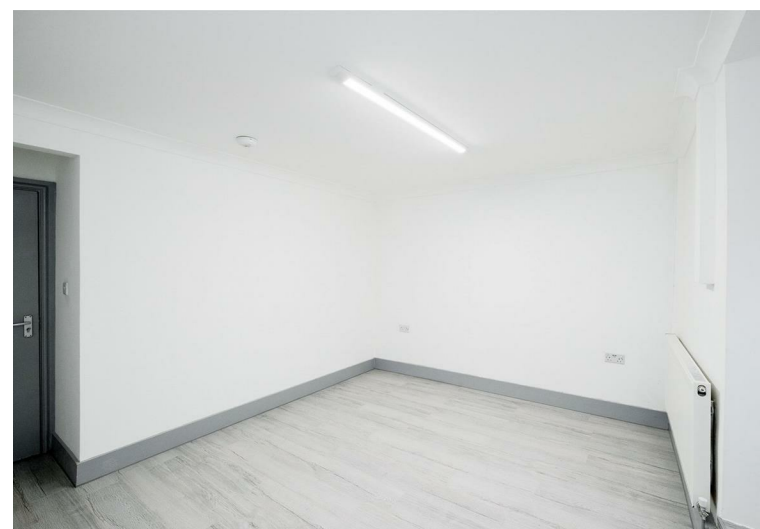
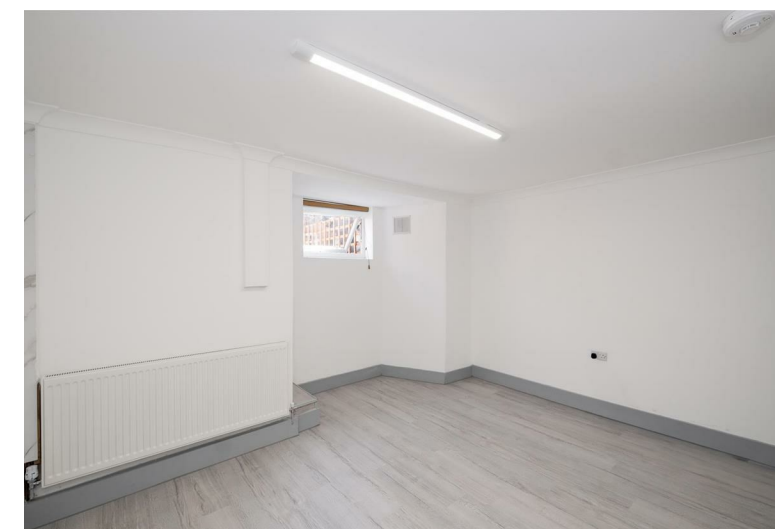
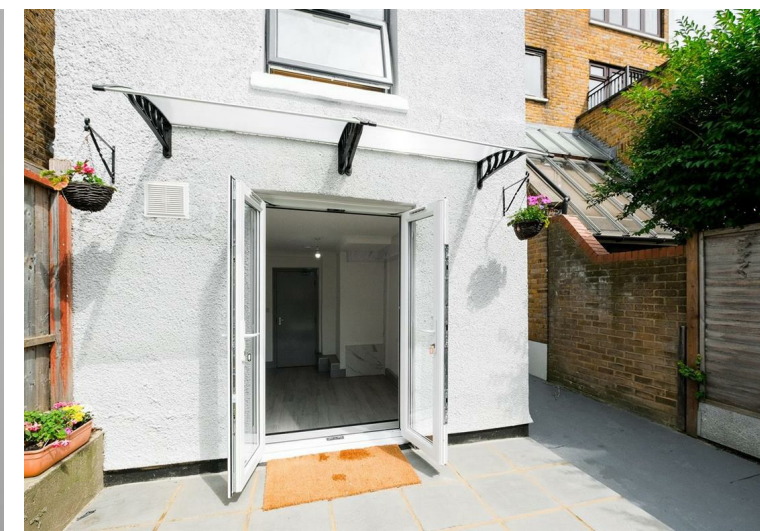
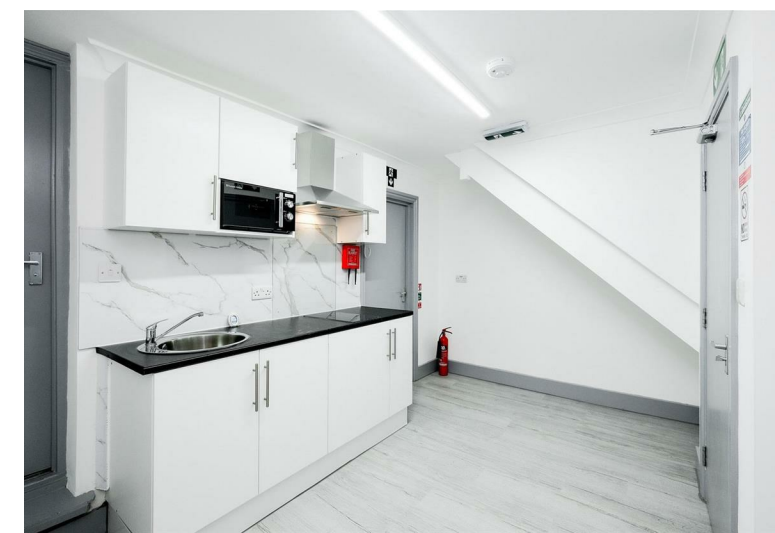


The Agent has not tested any apparatus, equipment, fixtures and fittings or services and so cannot verify that they are in working order or fit for the purpose. A buyer is advised to obtain verification from their solicitor or surveyor. References to the tenure of a property are based on information supplied by the seller. The agent has not had the sight of the title documents. A buyer is advised to obtain verification from their solicitors.



CHURCHILL
estates

Request a Viewing: **0208 503 6060** Email: walthamstow@wearechurchills.co.uk



ALL BILLS INCLUDED - Available End of March - Unfurnished - Churchill Estates are delighted to offer this spectacular modern one/two bedroom apartment ideally located just moments from Walthamstow Station and the charming Walthamstow Village.

Included bills consist of Gas, Electricity, Water, Council Tax & Wifi

This modern home offers an open-plan living area and large windows that fill the space with natural light. The kitchen is equipped with high-end appliances and ample storage, perfect for both everyday cooking and entertaining.

The spacious bedroom provides a peaceful retreat with sleek wooden flooring. The contemporary bathroom features elegant fixtures. With excellent transport links to central London and the unique shops and cafes of Walthamstow Village just a short walk away, this flat offers the perfect blend of convenience and modern living. The building includes a secure entry phone system.

Schedule a viewing today to discover your new home!

