



Bow Road, London, E3

BUTLER & STAG





**Nestled between the historic Bow Church and the leafy open spaces of Grove Hall Park, this charming early 20th-century two-bedroom residence offers 761 Sq/Ft of well-proportioned accommodation.**



## Share of Freehold

- Share Of Freehold
- Two Bedrooms
- Open Plan Living Concept
- Access To Resident Only Court Yard
- 761 Sq/Ft Internal Living Sapce
- Secure Development
- Characturful 20th Century Architecture
- Chain Free

The property features a bright open-plan living and dining area, creating a welcoming space ideal for modern living and entertaining.

Residents benefit from access to a private, residents-only courtyard, providing a peaceful retreat from the city.

Perfectly positioned just moments from Bow Road Underground Station and Bow Church DLR, the home enjoys excellent transport links alongside the character and community feel of this sought-after East London location.









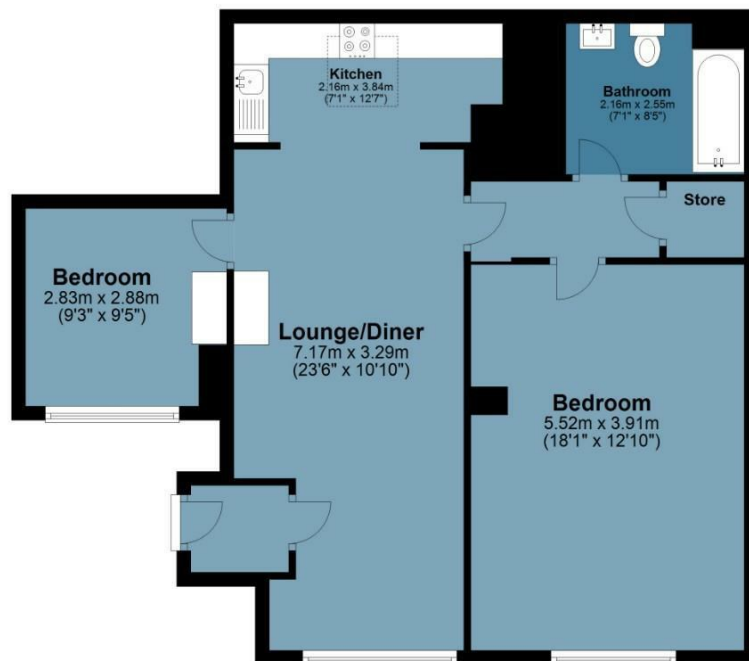
## Link House

Approx. Gross Internal Area 70.7 Sq M ( 761.4 Sq Ft )

BUTLER & STAG

### Ground Floor

Approx. 70.7 sq. metres (761.4 sq. feet)



Floor plan is for illustrative purposes only and is not to scale. Every attempt has been made to ensure the accuracy of the floor plan shown, however all measurements, fixtures, fittings and data shown are an approximate interpretation for illustrative purposes only.

IMPORTANT NOTICE - These particulars have been prepared in good faith and they are not intended to constitute part of an offer or contract. We have not performed a structural survey on this property and the services, appliances and specific fittings have not been tested. All photographs, measurements, floor plans and distances referred to are given as a guide and should not be relied upon.

BUTLER & STAG

☎ 020 8102 1236

🏠 508 Roman Road, Bow, London, E3 5LU

✉ bow@butlerandstag.com

[www.butlerandstag.uk](http://www.butlerandstag.uk)