



## Tankerville Road, SW16

### £600,000

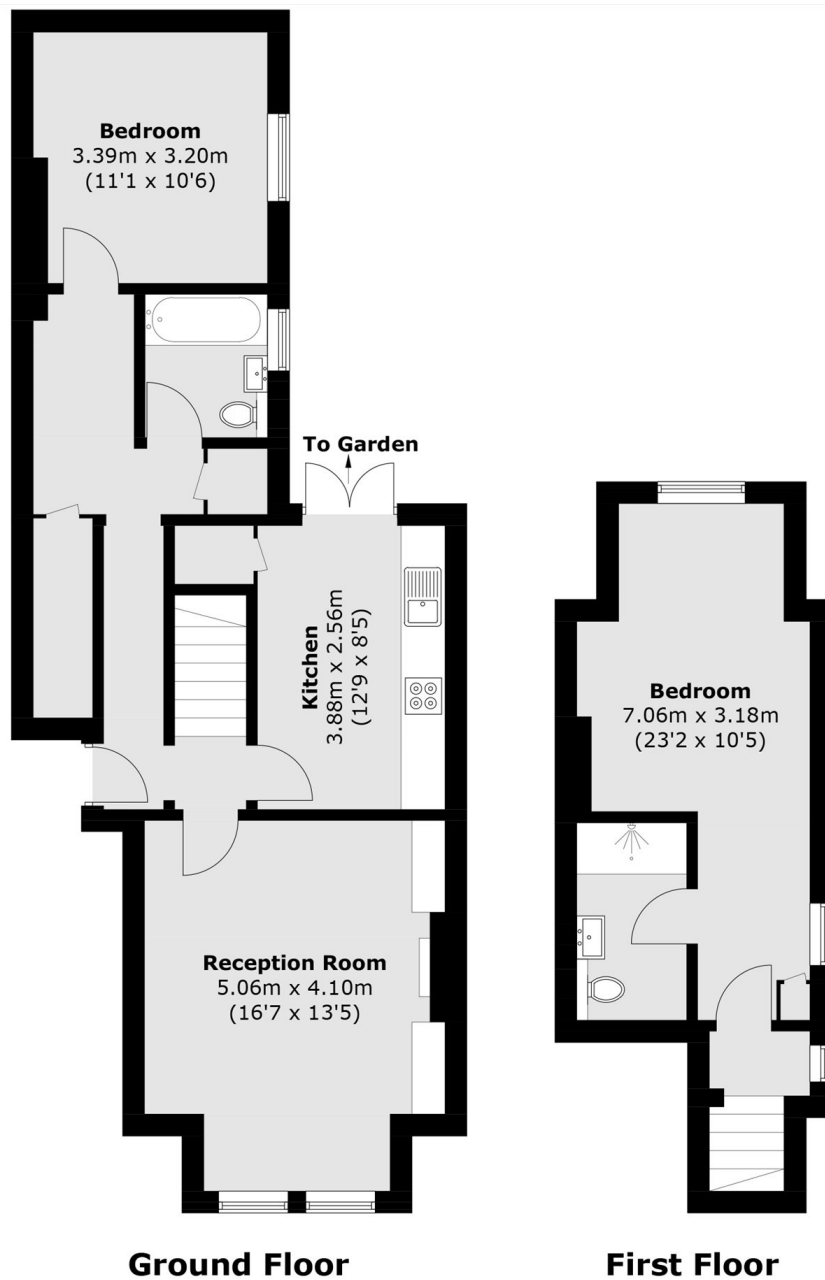
**OFFERS OVER** At just under 930 sq ft, this impressive ground-floor, split-level garden flat offers two generous double bedrooms and is presented in excellent condition throughout. The property boasts high ceilings, attractive period features, and well-proportioned rooms. Further benefits include two bathrooms, a private garden, and the convenience of no onward chain.

Tankerville Road is a peaceful residential street that offers the perfect balance of tranquillity and convenience. Everything you need is right on your doorstep, including the open green spaces of Streatham Common, the vibrant shops, cafés and restaurants of Streatham High Road, and superb transport links into the City via Streatham Common and Streatham Mainline stations. At the end of the road, you'll also find a Sainsbury's Local, a cosy coffee shop, a welcoming pub, and a popular local deli.

### Features

- Two Double Bedrooms
- Split Level
- No Onward Chain
- Separate Kitchen
- Two Bathrooms
- Private Garden

# Tankerville Road, London, SW16



Total area (approx.): 85.9 sq. m (924.6 sq. ft)

## Dexters

Streatham  
105 Streatham Hill  
London  
SW2 4UG  
Sales  
020 8674 7400

Energy Rating: D. We aim to make our particulars both accurate and reliable. However they are not guaranteed; nor do they form part of an offer or contract. If you require clarification on any points then please contact us, especially if you're traveling some distance to view. Please note that appliances and heating systems have not been tested and therefore no warranties can be given as to their good working order.

 **RICS** | Regulated  
Estate Agent  
and Letting Agent

[dexters.co.uk](https://www.dexters.co.uk)