



Babington Road, SW16

£600,000

Dexters



Babington Road, SW16

At over 1,000sqft is this immaculate three bedroom maisonette. This home has been lovingly maintained to create an incredible open kitchen/dining space with bi-folding doors onto the landscaped garden. The property is full of natural light with windows to the rear and side of the living space.

Two of the bedrooms are large doubles with the main featuring a large bay window, feature fireplace and fitted wardrobes. The third bedroom is perfect for a study or nursery. This home has a spacious hallway entrance as well as two large cupboards, ideal for storage and is being offered with no onward chain.

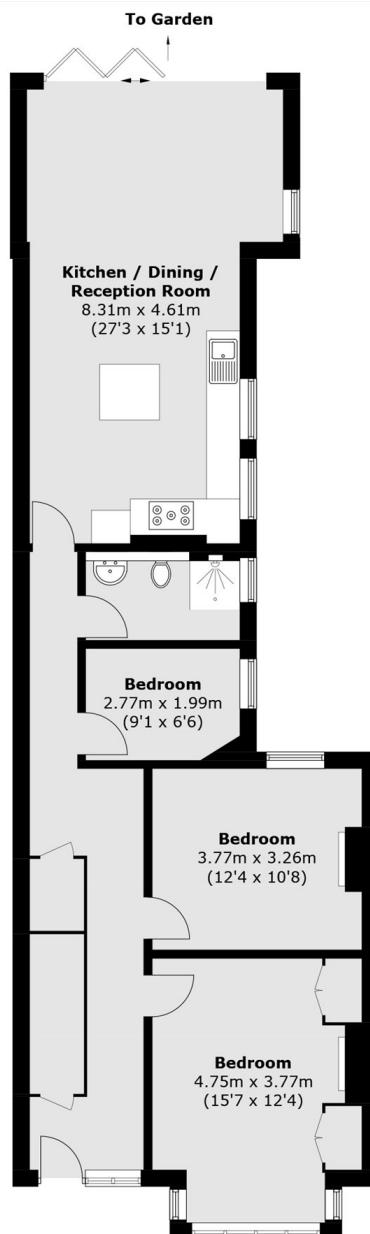
Babington Road is located within an easy walk to Streatham Station which forms part of the Thameslink service. The property is also a short distance from Tooting Bec Common which houses the lido. Streatham High Road has a range of shops and restaurants.

Features

- Three Bedrooms
- Own Front Door
- Private Garden
- Immaculate Condition
- Plenty of Storage
- Over 1,000 Sq Ft



Babington Road, London, SW16



Total area (approx.): 94.6 sq. m (1,018.2 sq. ft)