



Dukes Cottage, 20 Dukes Road, Fontwell, BN18 0SP

£575,000 Freehold



3 Bedrooms



2 Bathrooms



2 Reception Rooms

SW

Sims Williams

Key Features

- Extended, Character Home
- Semi-Rural Location - North of A27
- Sitting Room with Wood Burner
- Cottage Style Kitchen/Diner
- Ground Floor Bathroom
- Vaulted Principal Bedroom Suite
- 2 Further Bedrooms
- Southerly Rear Garden
- Garage/Workshop & Parking

EPC Rating

Current = D

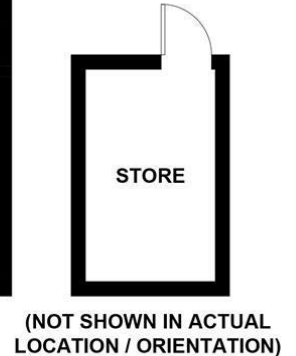
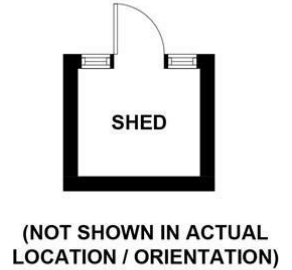
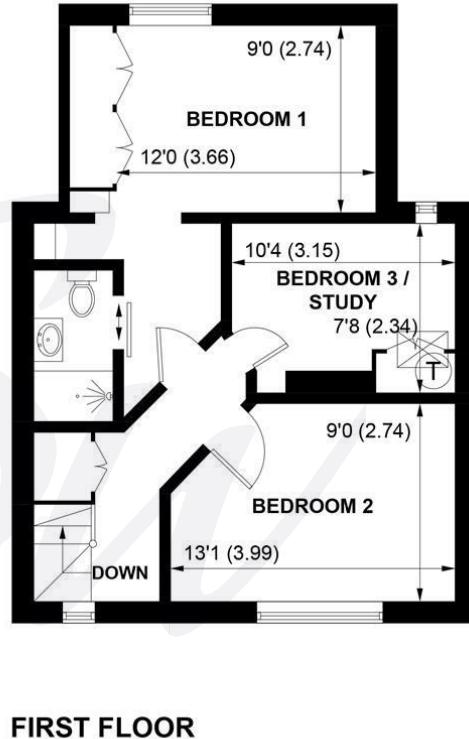
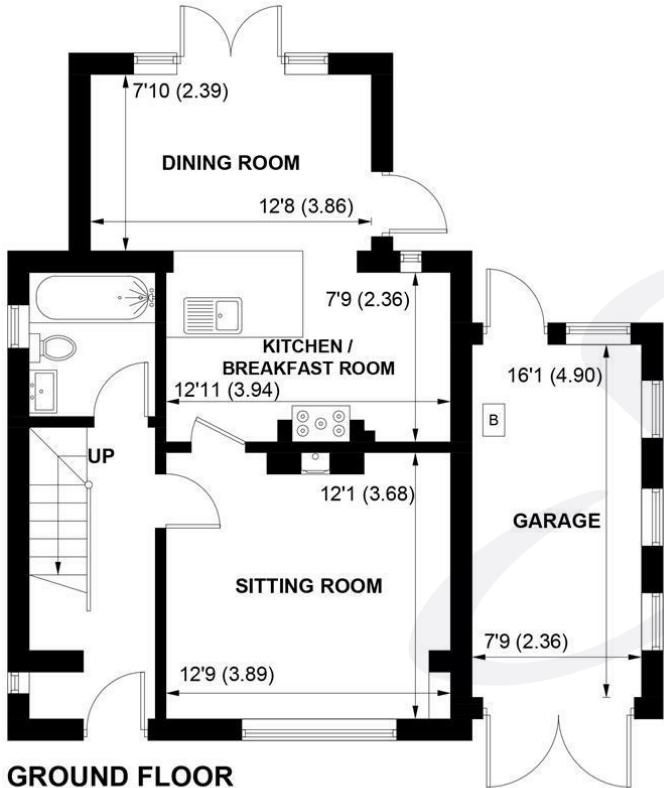
Potential = C

Council Tax Band

Band = C

Tenure - Freehold





APPROXIMATE GROSS INTERNAL AREA = 968 SQ FT / 89.9 SQ M
GARAGE / SHED / STORE = 213 SQ FT / 19.8 SQ M
TOTAL = 1181 SQ FT / 109.7 SQ M

NOT TO SCALE (For illustrative purposes only as defined by RICS Code of Measuring Practice) 2026 ©
Produced for Sims Williams



simswilliams.co.uk

CHICHESTER

8-9 Southgate

Sales 01243 787868

Lettings 01243 836055

chichester@simswilliams.co.uk

WALBERTON

5 Maple Parade

Sales 01243 551368

Lettings 01243 836055

walberton@simswilliams.co.uk

ARUNDEL

8a High Street

Sales 01903 885678

Lettings 01903 881133

arundel@simswilliams.co.uk

BOGNOR REGIS

46 High Street

Sales 01243 862626

Lettings 01243 836055

bognor-regis@simswilliams.co.uk

Viewing Strictly by arrangement via the vendor's agent Sims Williams 01243 551368. These particulars are believed to be correct but their accuracy is not guaranteed and they do not form part of any contract.