



Reculver Walk, Senacre, Maidstone, Kent, ME15 8QW

Price £270,000



****NO FORWARD CHAIN**** Nestled in the popular location of Reculver Walk, Senacre, this delightful two bedroom end-terrace house is ideal for both downsizers and first-time buyers. The property is situated close to local amenities and reputable schools, making it a great choice for families or those looking to start a family.

Approaching the property, you are greeted by a charming fenced front garden with well-established shrubs, creating an inviting entrance. Upon entering you are welcomed into a spacious hallway that leads to a generous lounge/diner, seamlessly connecting to a well-equipped kitchen. The kitchen benefits from a large storage cupboard for added convenience and connects to an enclosed rear porch with access to a private rear garden.

Upstairs you will find two good-sized double bedrooms with the principal bedroom benefiting from a large cupboard for storage. Both bedrooms are served by a well-appointed bathroom.

Outside, the property boasts a well-sized garden that offers a good level of privacy, along with additional storage options including a shed and store. Residents parking is conveniently available nearby enhancing its appeal further. Tenure: Freehold. Council Tax Band: C. EPC Rating: D.

*Some pictures have been enhanced and virtually staged using AI



LOCATION

Local facilities include shops, schools, doctor's surgery and bus service to Maidstone town centre, which is approximately 3-miles distance. The beautiful grounds of Mote Park are close by where fine recreational facilities are available. Covering over 450 acres, the park includes natural features such as grassland, woodland, rivers and a 30 acre lake. The village of Bearsted offers further amenities including a main line station and easy access to the M20 motorway.

ACCOMODATION

GROUND FLOOR:

Entrance hall

Living room

Kitchen

Rear porch

FIRST FLOOR:

Landing

Bedroom 1

Bedroom 2

Bathroom

EXTERNALLY

Store

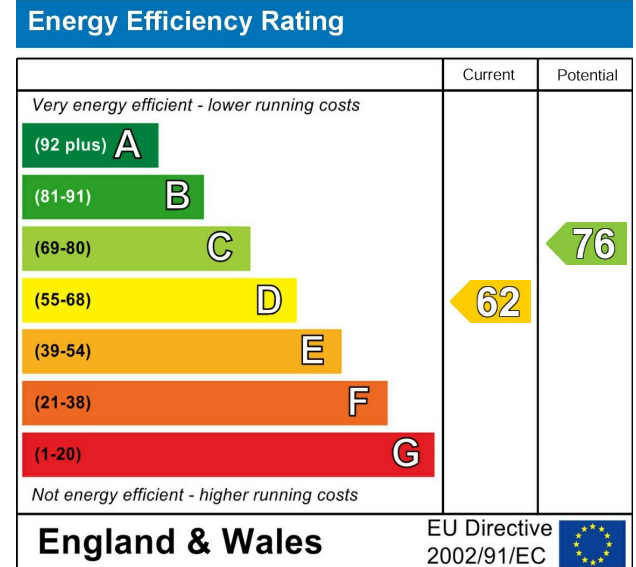
Front garden

Rear garden

Residents parking

VIEWINGS

Strictly by arrangement with the Agent's Bearsted Office: 132 Ashford Road, Bearsted, Maidstone, Kent ME14 4LX . Tel: 01622 739574.

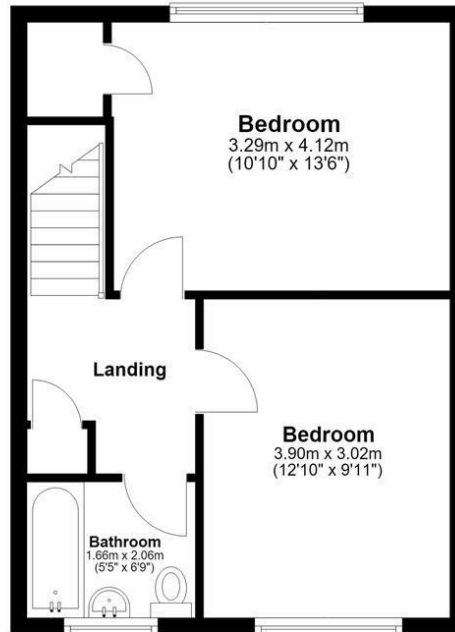


Page & Wells limited for themselves and for the vendors of this property whose agents they are give notice that: 1. These particulars do not constitute any part of, an offer or a contract. 2. All statements contained in these particulars as to this property are made without responsibility on the part of Page & Wells Limited or the Vendor. 3. None of the statements contained in these particulars as to the property is to be relied on as statements or representations of fact. 4. Any intending purchaser must satisfy himself by inspection or otherwise as to the correctness of each of the statements contained in these particulars. 5. The vendor does not make or give, and neither Page & Wells Limited nor any person in their employment has any authority to make or give any representation whatsoever in relation to this property. These particulars are supplied on the understanding that all negotiations are carried out throughout Page & Wells Limited. Properties with a reference prefixes EAA are those which Page & Wells Limited disclose an interest in accordance with the provisions of the Estates Agents Act 1979

Ground Floor



First Floor



Total area: approx. 77.8 sq. metres (837.6 sq. feet)

