



1 Bedrooms | 1 Bathrooms | 1 Reception Rooms

Grasmere Road | Purley | CR8 1DU

£280,000

LOFT

Grasmere Road |
Purley | CR8 1DU
£280,000

- Beautifully presented second floor apartment
- Private balcony overlooking the stunning communal gardens
- Open plan kitchen/reception room, with high quality integrated appliances and hard flooring
- Double bedroom
- Fully fitted modern bathroom
- Spacious large entrance hall
- Ideally situated a short walk from Purley train station and town centre
- Long lease

Second Floor

Entrance

Hallway

Open Plan

Kitchen/Reception Room

21'4 x 14'7 (6.50m x 4.45m)

Bedroom

13'3 x 10'3 (4.04m x 3.12m)

Bathroom

Outside

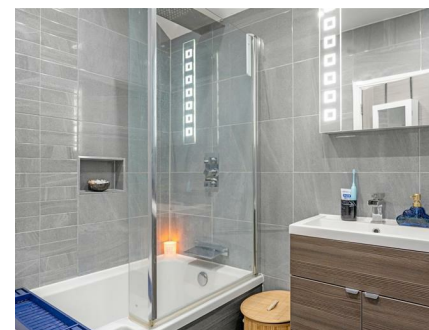
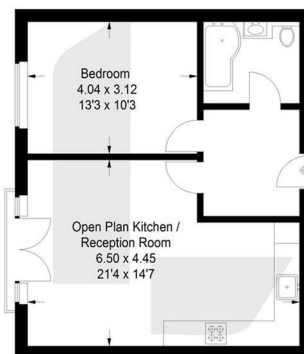
Balcony

Communal Gardens



Grasmere Road, CR8

Approximate Gross Internal Area
50.7 sq m / 546 sq ft



Second Floor

This plan is for layout guidance only. Not drawn to scale unless stated. Windows and door openings are approximate. Whilst every care is taken in the preparation of this plan, please check all dimensions, shapes and compass bearings before making any decisions reliant upon them. (ID1296101)

EPC Rating: B

23a High Street
Purley
Surrey
CR8 2AF
0208 660 8070
hello@loft-estates.co.uk

