



## Middlewich House, Taywood Road, Northolt

Guide Price **£269,000**

**SAB**  
ESTATES





## Middlewich House

Taywood Road, Northolt

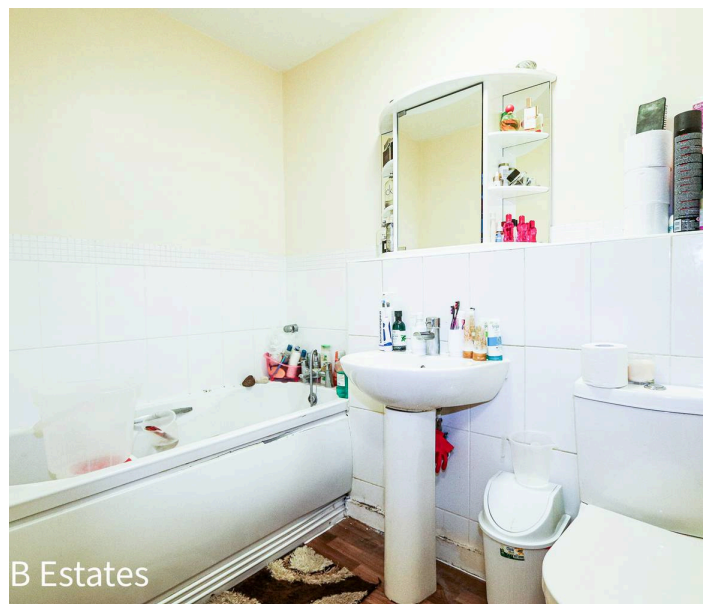
- Master Bedroom with en-suite
- Two Juliet Balconies
- Lift Available
- Assigned Parking Space
- 64 sq m / 689 sq ft
- Leasehold: 104 Years Remaining
- Ground Rent: £200 per annum
- Service Charge: £3,000 per annum

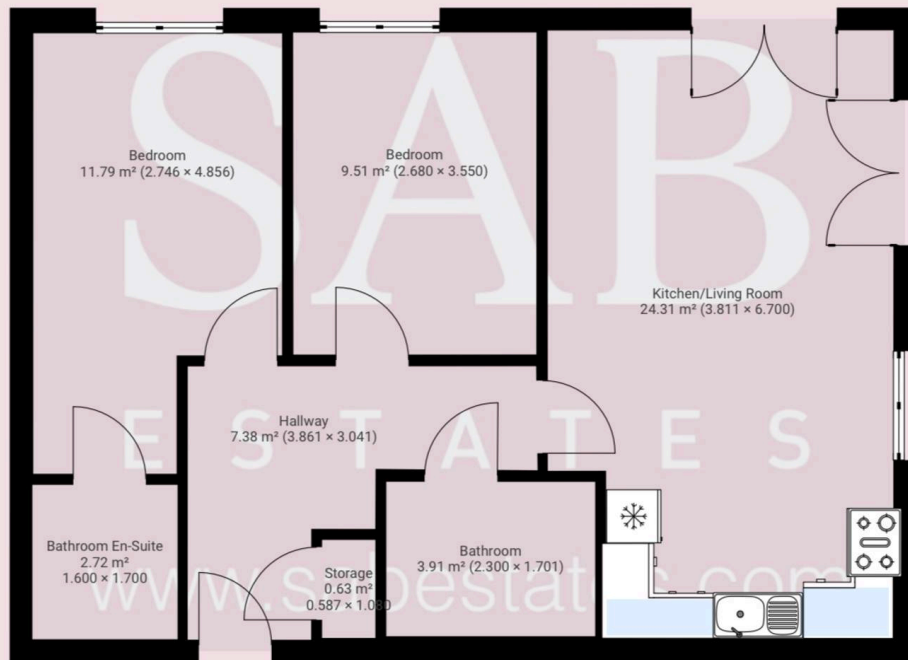
Council Tax band: D

Tenure: Leasehold

EPC Energy Efficiency Rating: C

EPC Environmental Impact Rating: C









## SAB Estates

236-238 Ruislip Road, Greenford - UB6 9RS

020 8575 2929 • [info@sabestates.com](mailto:info@sabestates.com) • [www.sabestates.com/](http://www.sabestates.com/)