



Living
made
better

Baltic Apartments
Royal Victoria Dock, E16 1AE



£1,800 PCM

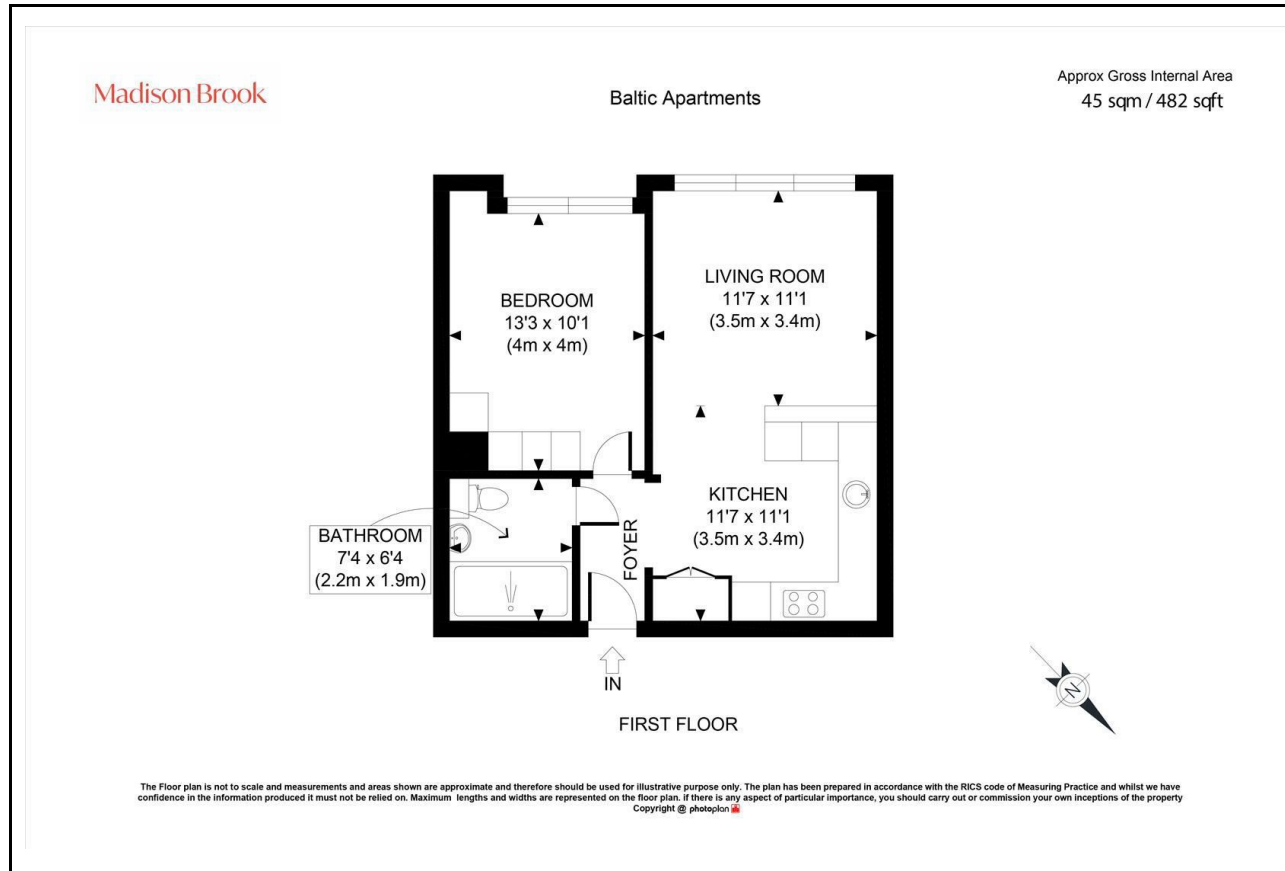
Baltic Apartments, Royal Victoria Dock, E16 1AE

Madison Brook

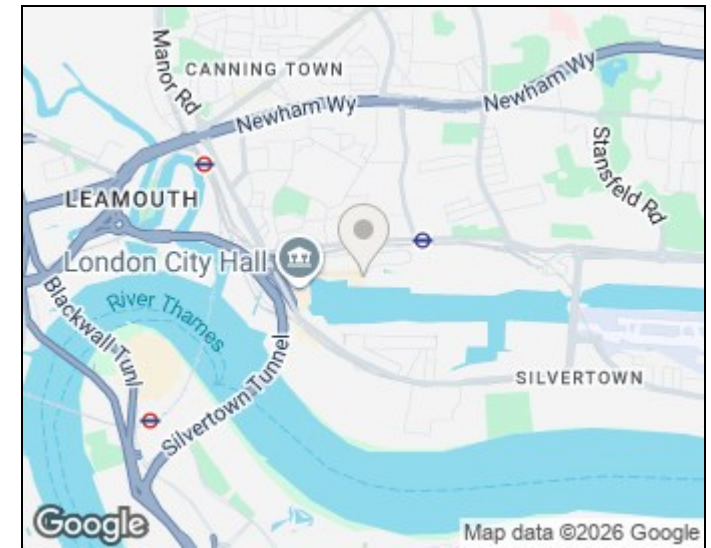
Property Summary

Stylish and refurbished one-bedroom apartment in Baltic Apartments, Royal Docks. Set on the first floor with 482 sq. ft. of internal space, this home features a bright open-plan kitchen/living area, integrated appliances, a breakfast bar, and floor-to-ceiling windows throughout. The double bedroom includes built-in wardrobes, and the sleek bathroom adds to the modern finish. Residents benefit from a gym, sauna, 24-hour concierge, and landscaped communal gardens. Ideally located close to Custom House DLR and Elizabeth Line, with local bars, restaurants, and the Excel Centre just moments away.

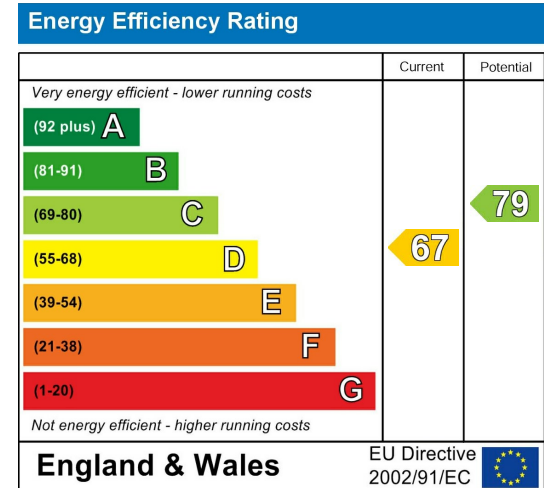
Floorplan



Area Map



Energy Efficiency Graph



These particulars, whilst believed to be accurate are set out as a general outline only for guidance and do not constitute any part of an offer or contract. Intending purchasers should not rely on them as statements of representation of fact, but must satisfy themselves by inspection or otherwise as to their accuracy. No person in this firm's employment has the authority to make or give any representation or warranty in respect of the property.

**Unit B 20 Western Gateway, Royal Victoria
Dock, London, E16 1BS
Tel: 020 3946 6000 Email:
docklands@madisonbrook.com
<https://madisonbrook.com/>**