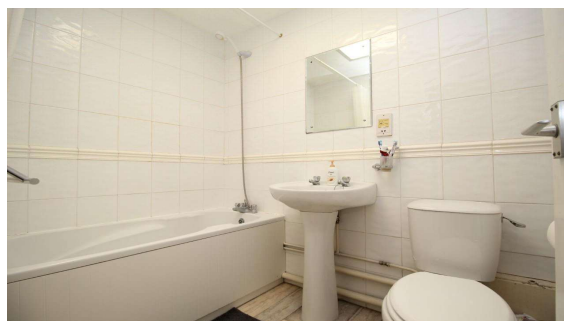
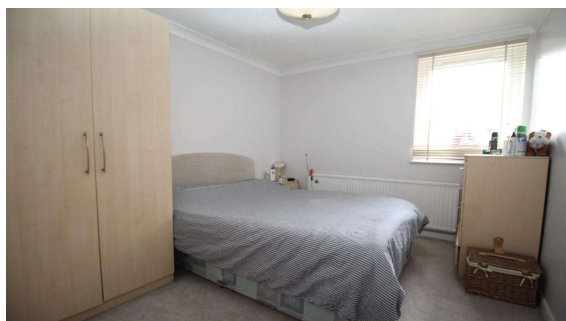
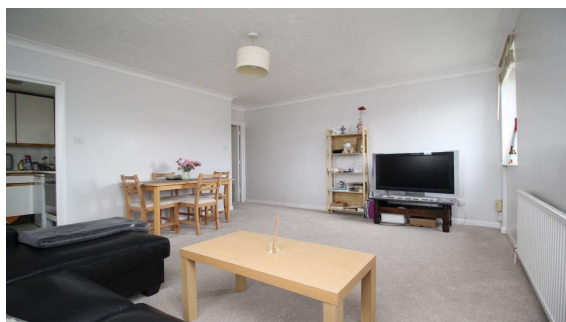




**Church Road, Egham, TW20 9QA**

**£210,000 Share of F/H**



Available with no onward chain and located adjacent to Egham High Street is this top floor one bedroom apartment being sold with share of freehold. This property benefits from a spacious lounge, double bedroom, kitchen and family bathroom. In addition, there is electric heating and an allocated parking space for one vehicle. Egham's recently regenerated High Street and mainline station are within a few minutes walk, whilst Virginia Water Lake, Windsor Great Park and M25 are within a short drive.

Church Road, Egham, Surrey, TW20 9QA

**FLOOR PLAN**

Approximate Gross Internal Area :- 43 sq m / 463 sq ft

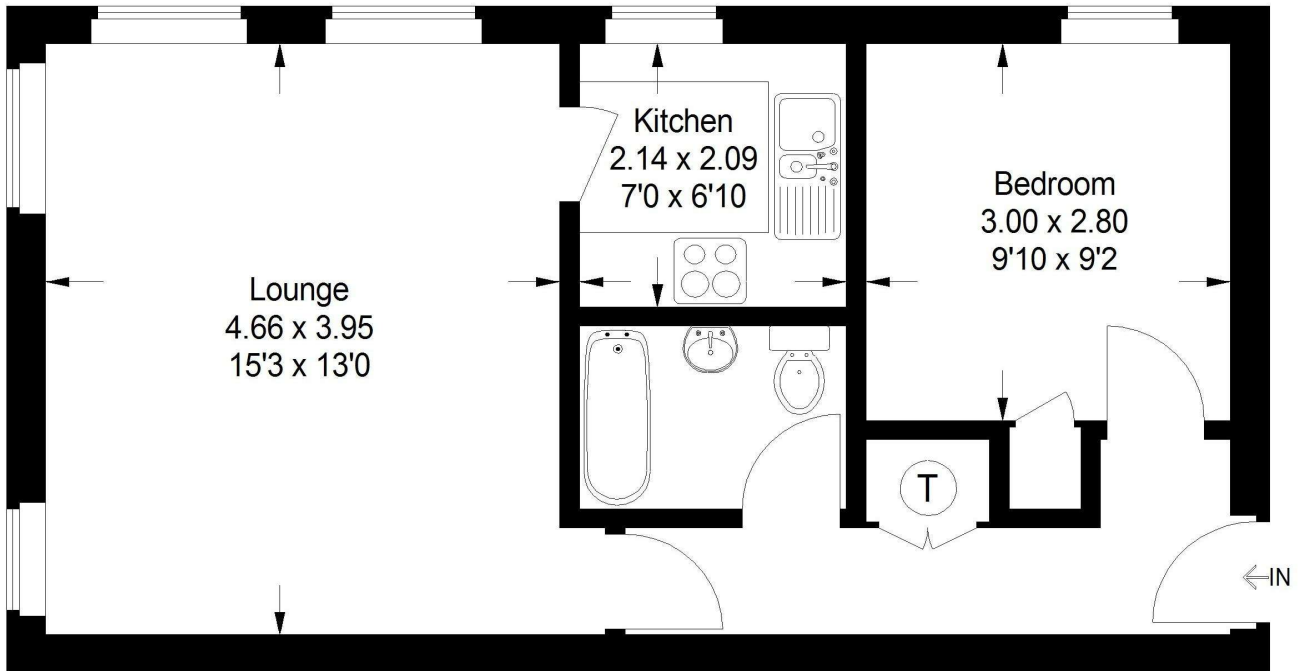
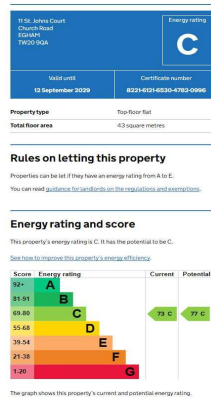


Illustration For Identification Purposes Only.  
Not To Scale

**EPC**



**LEASE:** 998 years remaining (awaiting written confirmation)

**SERVICE CHARGE:** £1500 per annum (awaiting written confirmation)

**COUNCIL TAX BAND:** C - Runnymede Borough Council

**VIEWINGS:** By appointment with the clients selling agents,  
Nevin & Wells Residential on 01784 437 437 or visit  
[www.nevinandwells.co.uk](http://www.nevinandwells.co.uk)



All measurements are approximate. Nevin & Wells Residential have not tested any systems or appliances.