



Guide Price
£280,000

Freehold

2x  1x  1x 

**Milton Street,
Maidstone, Kent ME16**

OVER 60?

Secure this property
for up to **59% less!**

Wards
Helping you move forwards



Main features

- Bay fronted Victorian cottage
- Extended kitchen overlooking a large garden to rear
- Supersized bedroom 1 with a spacious 2nd bedroom
- Decked area in garden with storage below
- Useful cellar ripe for conversion

Accommodation

GROUND FLOOR

Lounge: 13'2 x 10'4 (4.02m x 3.15m)
 Dining Room: 13'2 x 10'6 (4.02m x 3.20m)
 Kitchen: 12'2 x 7'5 (3.71m x 2.26m)

BASEMENT

Cellar: 12'8 x 9'9 (3.86m x 2.97m)

FIRST FLOOR

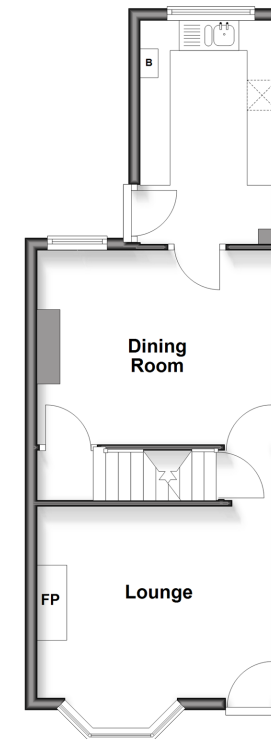
Landing
 Bedroom 1: 16'9 x 10'3 (5.11m x 3.13m)
 Bedroom 2: 10'10 x 10'3 (3.30m x 3.13m)
 Bathroom

OUTSIDE

Rear Garden
 Front Garden

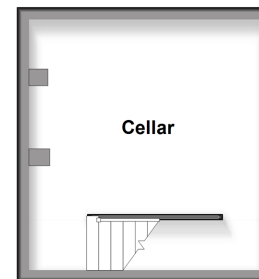
Ground Floor

Approx. 39.0 sq. metres (419.4 sq. feet)



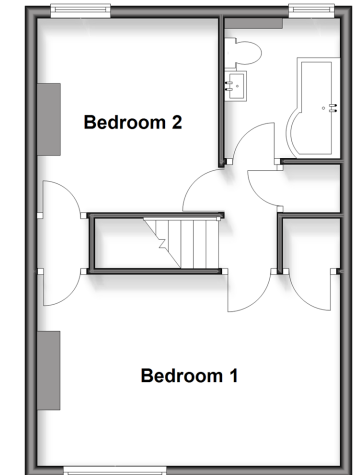
Basement

Approx. 16.2 sq. metres (174.3 sq. feet)



First Floor

Approx. 38.0 sq. metres (409.2 sq. feet)



Call Maidstone - 01622 683737 ■ wardsof Kent.co.uk

■ Through a Homewise Home For Life Plan people aged 60+ can secure this property for up to 59% less, by purchasing a Lifetime Lease



13159326/20260325/CV/DS