



Mitcham Road, SW17

£700,000

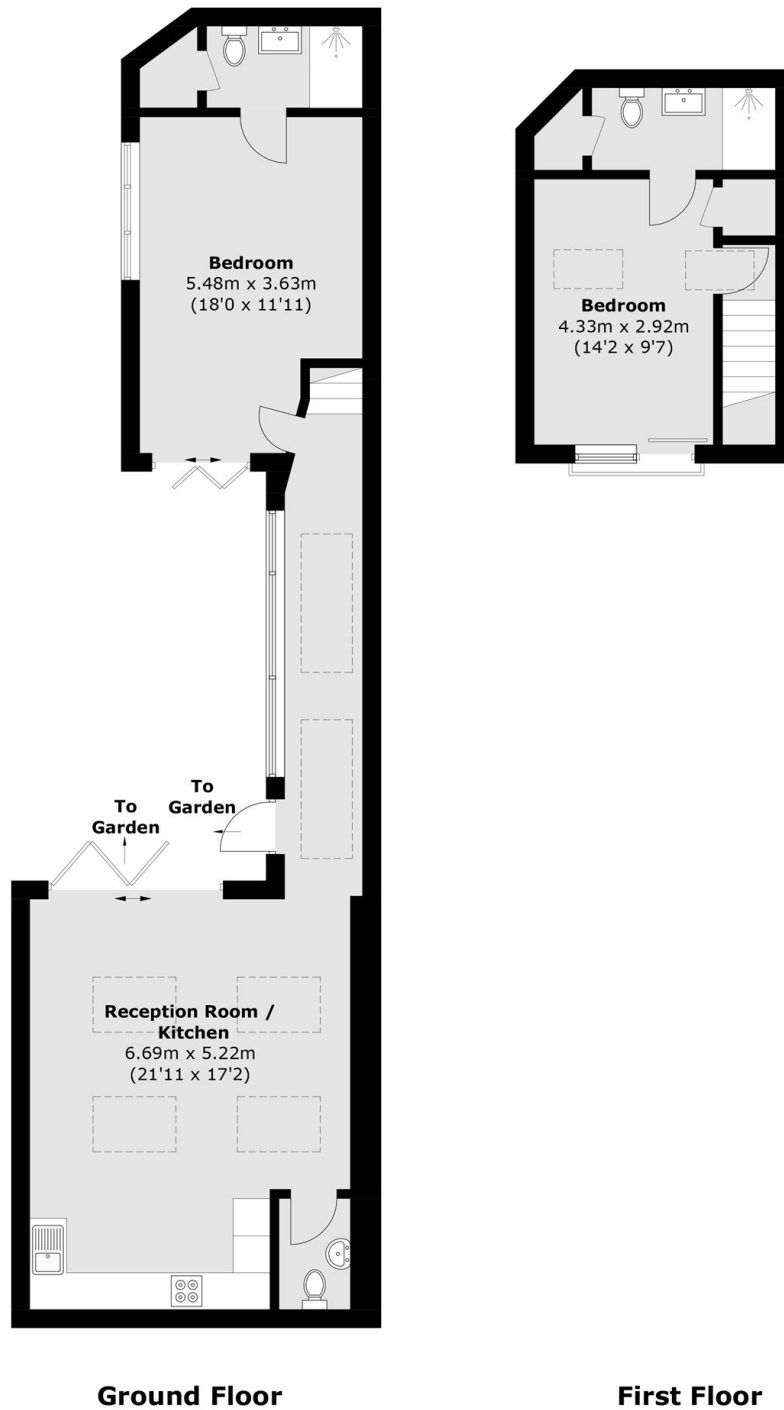
An exquisite freehold home positioned in the heart of Tooting embodying sophisticated living with an unmatched open plan kitchen/reception room, a courtyard garden, split level accommodation with two generous double bedrooms and two bathrooms. The property is sold chain free.

Positioned between Bickersteth Road and Mitcham Road and well positioned for the many shops, bars and amenities of Tooting within walking distance.

Features

Two Bedrooms
Stylish Interior
Freehold Home
Two Bathrooms
Courtyard Garden
Secluded Location

Mitcham Road, London, SW17



Total area (approx.): 93.9 sq. m (1010.7 sq. ft)