

# 15 Ashfields Grove, £265,000

(Other charges apply)

RICHMOND  
VILLAGES

Part of Bupa

SF

1



1



EPC - C



## 1 bedroom second floor apartment

A spacious second-floor, one-bedroom apartment with lift access. At 837 sqft (77.8sqm), the accommodation features an entrance hall, large living room with triple aspect, modern fitted kitchen, main bedroom with dressing room en-suite shower room. The apartment is situated close to the main village centre and village facilities and the property is available with no upward chain.

### Specification

- Large, bright lounge/dining room with double-glazed French doors leading to balcony
- Large double glazed doors leading from the living room to the fully fitted kitchen with granite worktops and a range of wall and base units with under cupboard lighting.
- Large main bedroom with fitted wardrobes.
- En-suite shower room with walk-in shower and fully fitted white suite.
- Dressing room with double glazed skylight window.
- Entrance hall with large storage cupboard and utility cupboard with Bosch washing machine and Bosch tumble dryer.
- Central heating radiators in all rooms. TV and satellite points\*.
- Well stocked flower borders and lawns maintained by the Village Gardeners.
- Allocated parking space for one car.

\*Satellite subscription not included.

Important Notice: These particulars are intended to give a fair and substantially correct overall description. Other fees and charges apply, please contact the Village Advisers for further details. Properties are sold on a 125 year lease and this property has 119 years remaining.

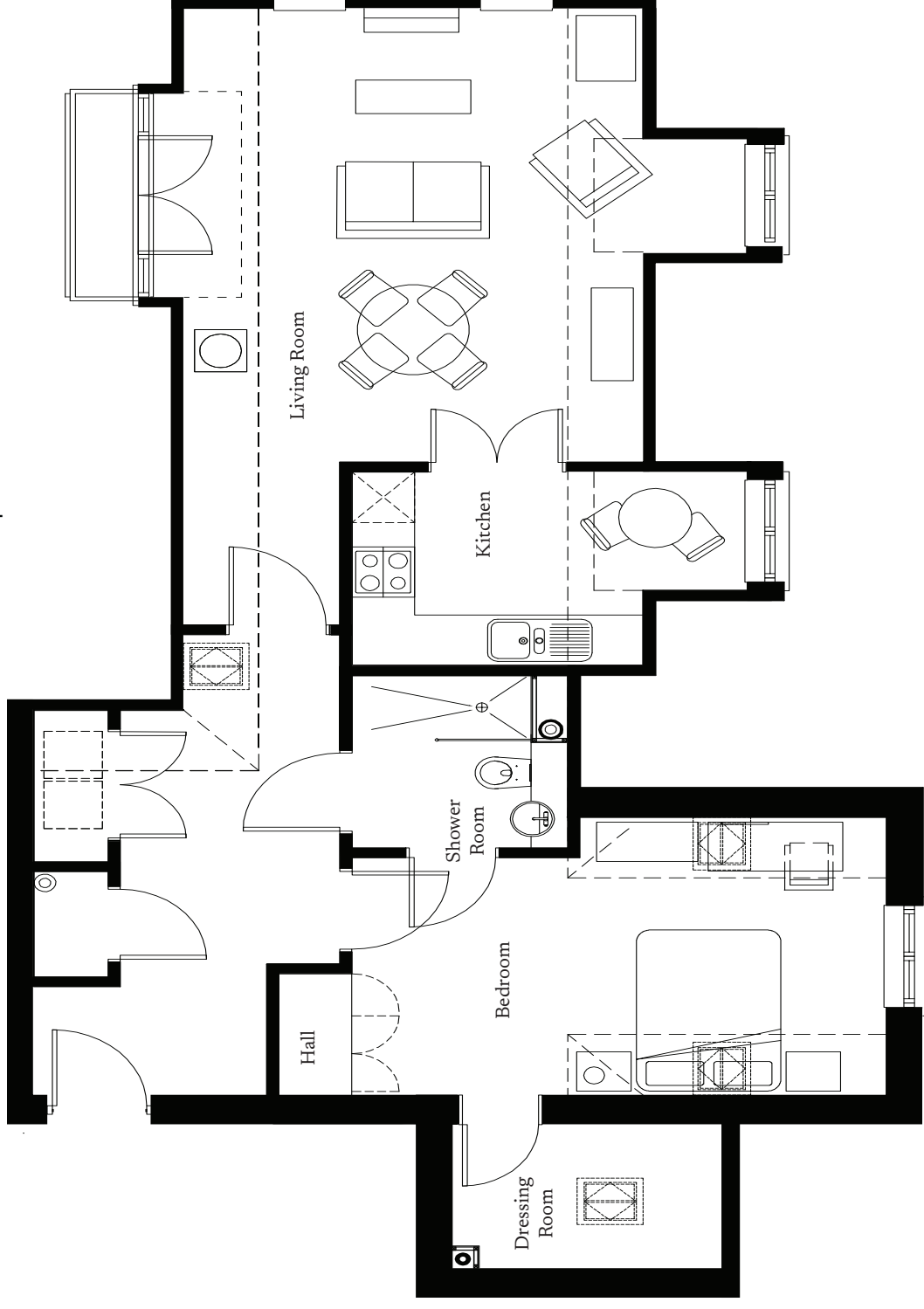
01332 794300

astonontrent@richmond-villages.com

Richmond Villages Aston-on-Trent,  
Richmond Drive, Aston-on-Trent, Derbyshire DE72 2EA

# 15 Ashfields Grove

Second Floor | 77.8m<sup>2</sup> – 837ft<sup>2</sup>



- Kitchen**  
3780mm x 2995mm  
12'5" x 7'6"
- Living Room**  
5722mm x 5388mm  
18'9" x 17'8"
- Bedroom**  
5800mm x 3300mm  
19' x 10'10"
- Dressing Room**  
1900mm x 1700mm  
6'2" x 5'7"
- Shower Room**  
2063mm x 2047mm  
6'9" x 6'9"

These particulars are intended to give a fair and substantially correct overall description. Measurements have been taken at 1500mm ceiling height.

All dimensions are approximate. Bedroom measurements include the wardrobe if applicable. Room measurements include bay windows if applicable. Furniture layout is to give an indicative impression. Although all efforts have been made to ensure its accuracy at time of print dimensions, fixtures, fittings, finishes and specifications are subject to change without notice.

The properties are sold unfurnished.

