



Alderney Street, SW1V

£950,000

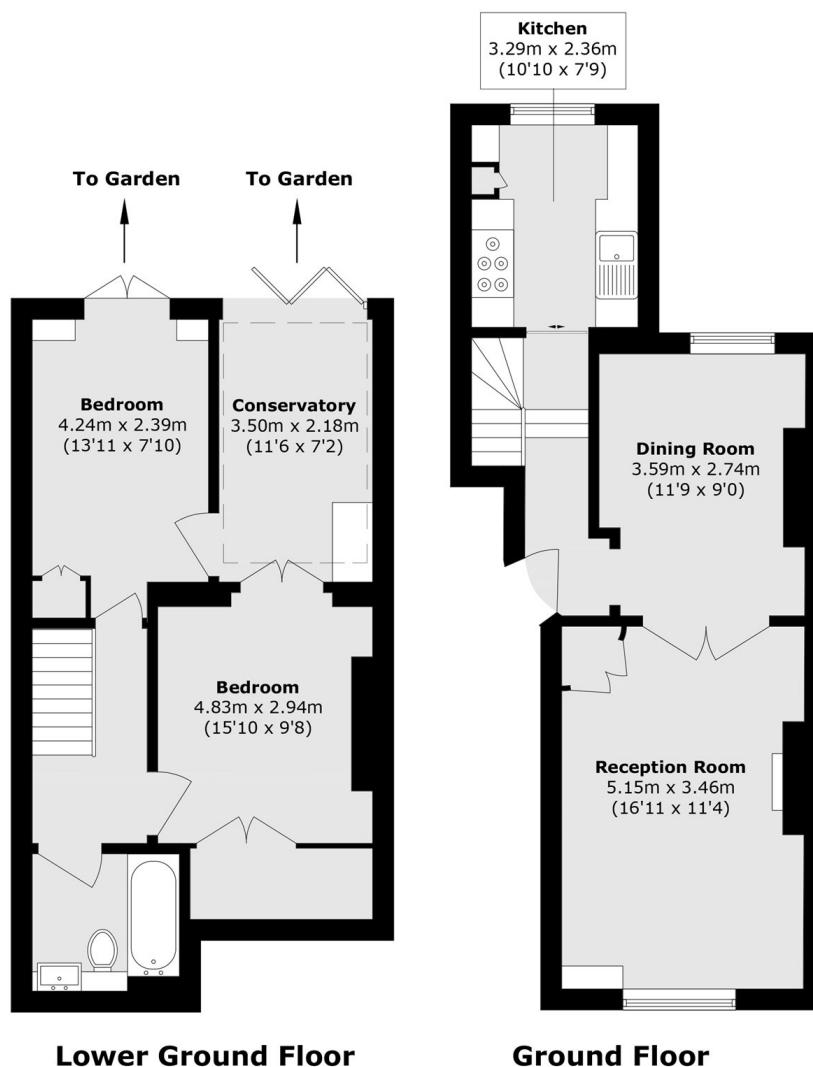
A beautifully presented two-bedroom, split-level maisonette set within a classic period building in the Pimlico Grid, featuring a generous reception/dining room, two well-proportioned double bedrooms, and a secluded private garden.

Alderney Street is superbly located, offering easy access to a wide range of local shops, amenities and transport links, with Pimlico Underground station just minutes away and the River Thames close by.

Features

- Close to Transport Links
- Two Double Bedrooms
- Share of Freehold
- Private Garden
- Pimlico Grid
- Split Level

Alderney Street, London, SW1V



Total area (approx.): 84.8 sq. m (912.7 sq. ft)

Dexters

Westminster
50 Churton Street
London
SW1V 2LP
Sales
020 7590 9570

Energy Rating: C. We aim to make our particulars both accurate and reliable. However they are not guaranteed; nor do they form part of an offer or contract. If you require clarification on any points then please contact us, especially if you're traveling some distance to view. Please note that appliances and heating systems have not been tested and therefore no warranties can be given as to their good working order.

 **RICS** | Regulated
Estate Agent
and Letting Agent

[dexters.co.uk](https://www.dexters.co.uk)