



OVER 60?

Secure this property
for up to **59% less!**

Guide Price
£200,000

Freehold

2x  1x  1x 

**Milton Avenue, Margate,
Kent, CT9**

Wards
Helping you move forwards



Main features

- No onward chain
- Well presented and ready for you to put your own stamp on and turn into your dream home
- Good size bedrooms
- Ideal for first time buyers
- Private sunny courtyard garden to sit and relax

Accommodation

GROUND FLOOR

Lounge: 13'3 x 11'9 (4.04m x 3.58m)

Kitchen: 13'2 x 8'10 (4.02m x 2.69m)

Bathroom : 5'11 x 4'11 (1.80m x 1.50m)

FIRST FLOOR

Landing

Bedroom 1: 13'3 x 9'0 (4.04m x 2.75m)

Bedroom 2: 13'4 x 8'10 (4.07m x 2.69m)

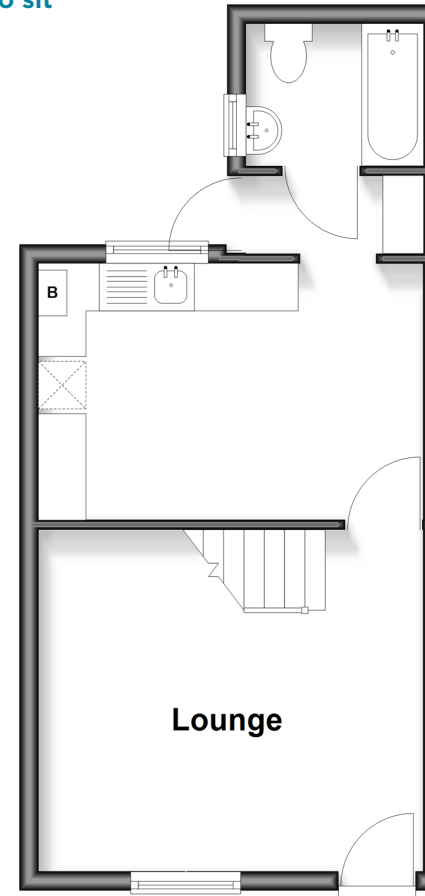
OUTSIDE

Front Garden

Courtyard Rear Garden

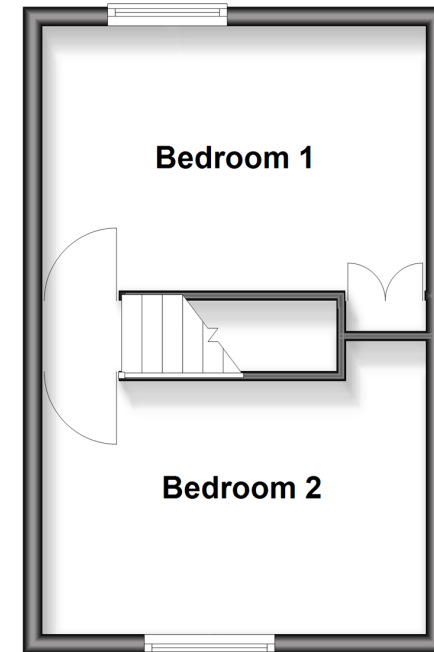
Ground Floor

Approx. 30.5 sq. metres (328.6 sq. feet)



First Floor

Approx. 25.8 sq. metres (278.1 sq. feet)



Call Cliftonville - 01843 227447 ■ wardsofkent.co.uk

- A private rental licensing scheme applies to some properties in this area, please contact us before proceeding
- Legal advice should be taken to verify fixtures/fittings, planning, alterations and/or lease details
- Appliances & services are untested, dimensions are approximate and floor plans are not to scale
- Through a Homewise Home For Life Plan people aged 60+ can secure this property for up to 50% less, by purchasing a Lifetime Lease.



15111507/20251004/DM/NF