

ALEXANDER
STEER

FAIRLAWN AVENUE, W4

£800,000

SHARE OF FREEHOLD

 2

 2

 1

 C

PROPERTY FEATURES

- Share Of Freehold
- Large Apartment
- Private Garden
- Period Building
- Chain Free
- Close To Transport & Amenities



FAIRLAWN AVENUE

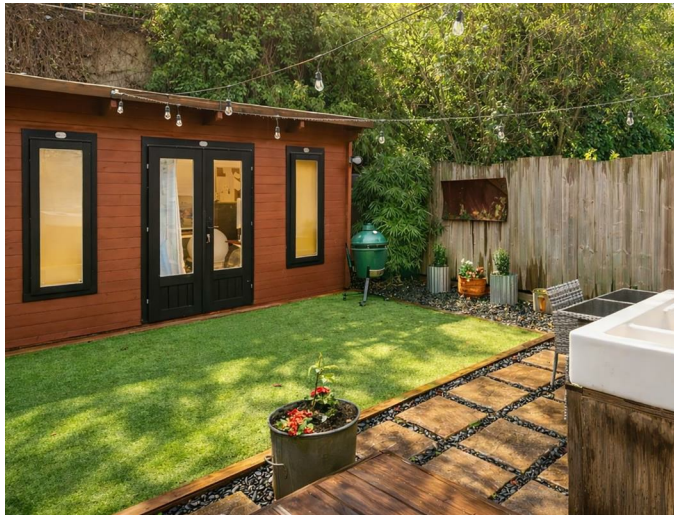
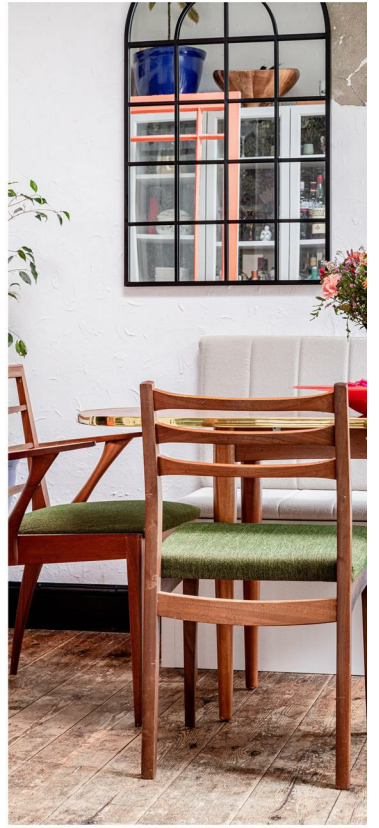
£800,000

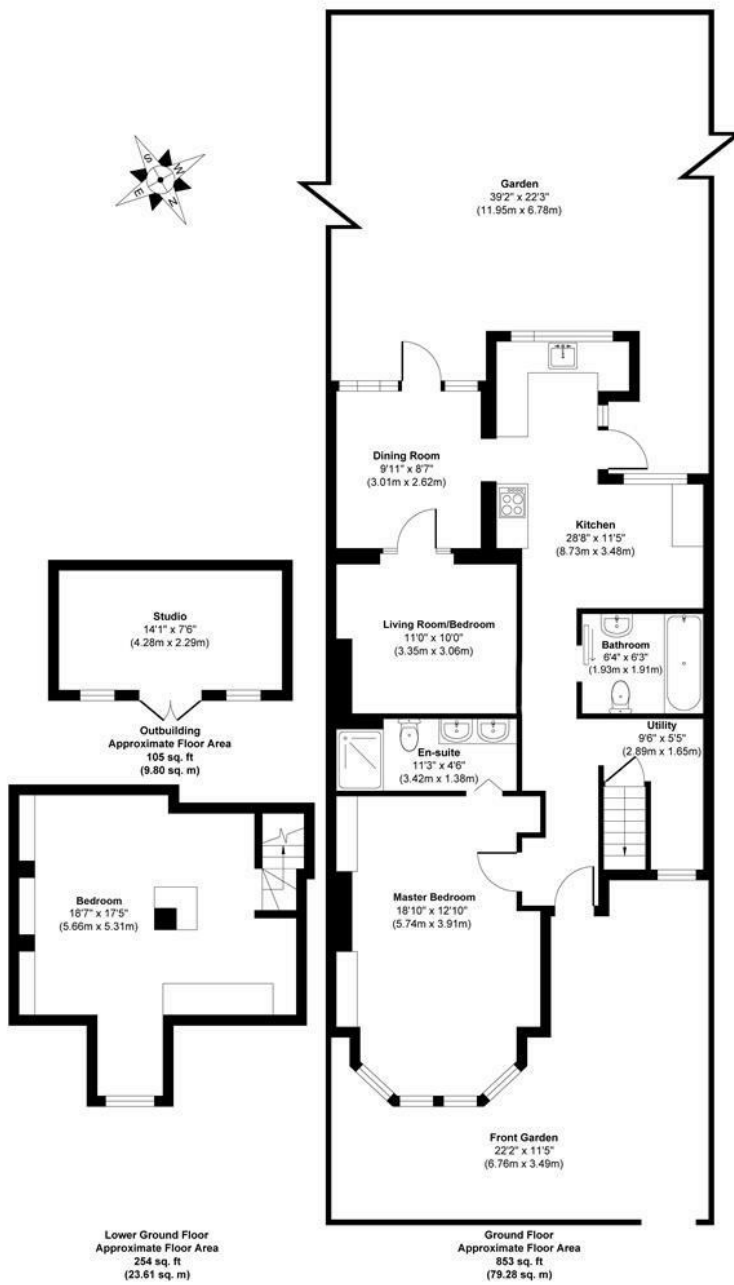
An unusually large ground floor garden apartment. The property has been recently refurbished throughout to be an exciting space with a tasteful feel to it. It is a short distance to local transport links and the shops, restaurants and cafes of Chiswick High Road. It will come with a share of the freehold and is offered chain free.

The property is spacious, there is a large bedroom and ensuite to the front of the property and another good size bedroom in the lower ground floor. To the rear, the property has a stylish kitchen with contemporary features, there is a separate dining area attached to the room. The dining area splits with the snug to the left and the entrance to the garden on the right. The garden is large and has a spacious home office at the end of it.

Fairlawn Avenue is in the heart of Chiswick. you are within five minutes walk to many critical elements of the area, namely, Chiswick Park Station (District line), Chiswick Business Park, Belmont Primary School, Turnham Green and finally the exciting Chiswick High Road.







Approx. Gross Internal Floor Area 1212 sq. ft / 112.69 sq. m

Illustration for identification purposes only, measurements are approximate, not to scale.

Produced by Elements Property



@ALEXANDERSTEERPROPERTY

CALL US ON

0203 822 0111

hello@alexandersteer.co.uk

alexandersteer.co.uk

Council Tax Band

D

Energy Efficiency Rating		
	Current	Potential
Very energy efficient - lower running costs		
(92 plus) A		
(81-91) B		
(69-80) C	74	79
(55-68) D		
(39-54) E		
(21-38) F		
(1-20) G		
Not energy efficient - higher running costs		
England & Wales	EU Directive 2002/91/EC	

Agents Note: Whilst every care has been taken to prepare these particulars, they are for guidance purposes only. All measurements are approximate and are for general guidance purposes only and whilst every care has been taken to ensure their accuracy, they should not be relied upon and potential buyers are advised to recheck the measurements.

ALEXANDER STEER
Estate Agents