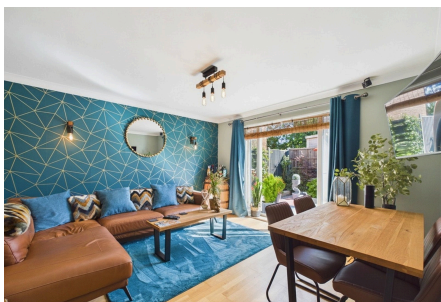


Francis Road, Long Stratton - Freehold - EPC rating C

Guide Price £260,000 to £270,000

2 1 1



This immaculately presented detached bungalow is located in the heart of the town just a short stroll from a wide range of shops, amenities, and local conveniences. Beautifully maintained, the property boasts stylish décor and high-quality fittings throughout creating a home that is ready to move straight into. To the rear of the property, the delightful living room offers a warm and inviting space in which to relax, with double doors opening directly onto the beautifully landscaped rear garden. To the front of the property, a driveway provides convenient off-road parking for two vehicles, completing this exceptional home that effortlessly combines comfort, style, and a superb central location.

Key Features

- Price Guide £260,000 to £270,000
- Underfloor heating and new flooring
- Two double bedrooms
- Driveway parking for 2 cars
- Heating - air source Drainage - mains
- Replacement ASH system 2024
- Replacement bathroom 2021
- Enclosed landscaped garden
- Council Tax Band C
- EPC rating C

