



CROMWELL ROAD, HOVE

2 BEDROOMS
1 BATHROOM
1 LIVING ROOM

£220,000

CROMWELL ROAD, HOVE

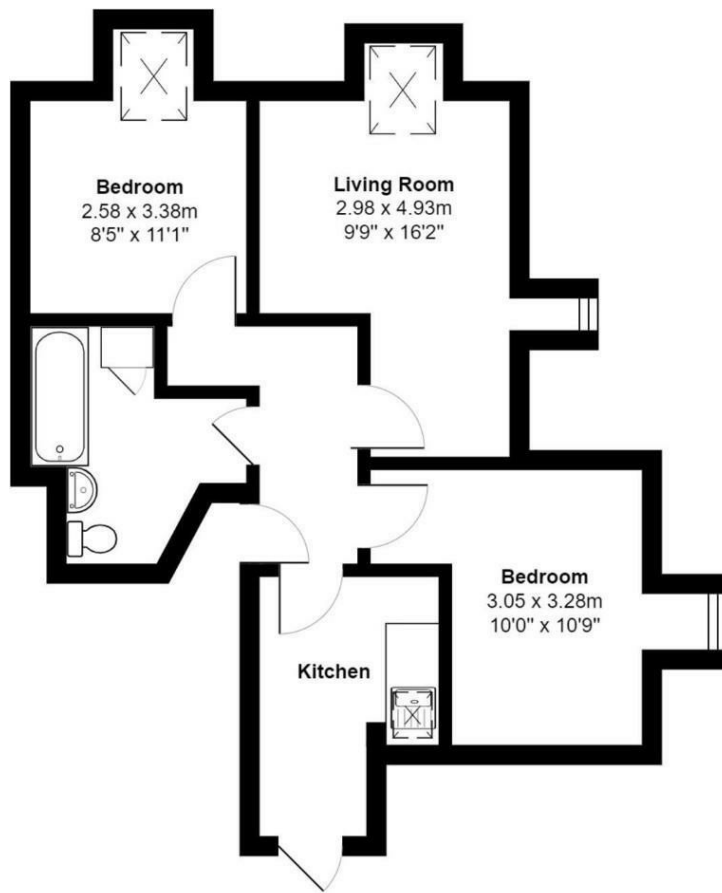
2 BEDROOM
1 BATHROOM
1 LIVING ROOM

Situated moments from Hove mainline station is this two-bedroom flat, forming the top floor of a beautiful period building on Cromwell Road.

- Two Bedroom Apartment
- Top Floor
- Moments From Hove Mainline Station
- Period Building
- Skylight Windows
- Range of Pubs, Cafes & Restaurants Nearby







Total Area: 45.4 m² ... 489 ft²

All measurements are approximate and for display purposes only

HAMLYN SMITH

+44 (0) 1273 762222

HAMLYSMITH.CO.UK

CROMWELL ROAD, HOVE

Skylight windows flood the flat with an abundance of natural light, enhancing the sense of space throughout. The accommodation comprises a bright living room with dual aspect windows, a separate kitchen, two bedrooms and a bathroom, creating a well-balanced and comfortable home.

Situated on Cromwell Road, you'll find yourself just a short stroll from the beach, the vibrant shops, cafés, and restaurants of Church Road, and excellent transport links, including Hove Station, offering easy access to Brighton and London. The area is also well-served by green spaces, with St Ann's Well Gardens and Hove Lawns both nearby, creating the perfect balance of coastal living and city convenience.

