



Windrush, Highworth, SN6 7DX

£225,000
(Subject to Contract)

Hanley's

Windrush Highworth SN6 7DX

A three bedroom mid terrace house set in an elevated position with far reaching views to the front from the first floor. Situated in a popular location close to Pentylands Country Park and local amenities and schools with accommodation comprising: Spacious entrance hall, living room with doors opening to the kitchen/dining room with a range of wall and base units, integrated oven, gas hob with extractor fan over and door to the rear garden. To the first floor: landing with airing cupboard housing the gas fired boiler which was installed in April 2024, bathroom with shower over the bath and three bedrooms all with fitted wardrobes. The property further benefits from gas radiator central heating and double glazing. Outside to the front is a garden with shrub borders and stepped pathway to the front door. To the rear is a private, southerly facing garden with patio area and steps to a raised seating area and further paved garden with a selection of tree, shrub and flower borders. Gated access to the rear leads to the nearby single garage with parking to the front.



1 Bathroom



3 Bedrooms



1 Reception

EPC: C74

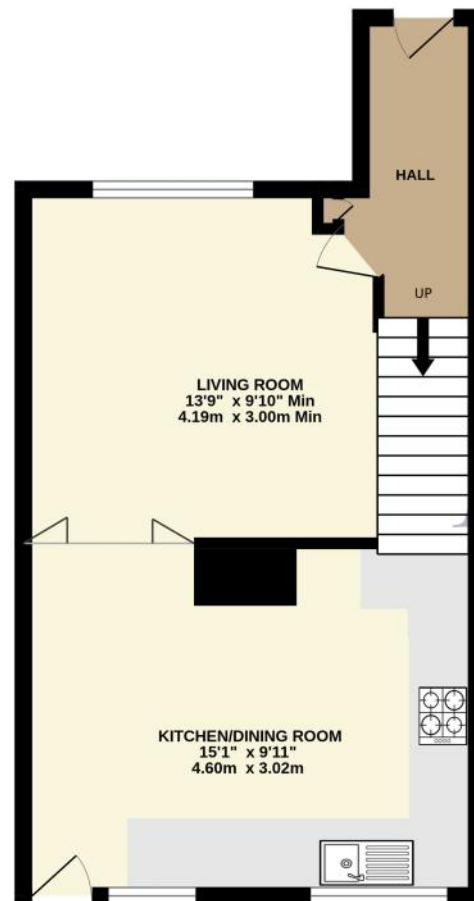
Council Tax Band: B

Tenure: Freehold

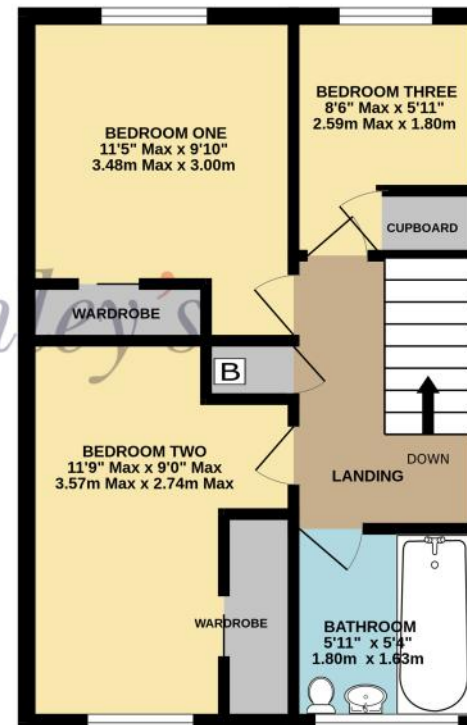


DISCLAIMER. These particulars, whilst believed to be accurate are set out as a general outline for guidance and do not constitute any part of an offer or contract. Intending purchasers should not rely on them as statements or representation of fact, but must satisfy themselves by inspection or otherwise as to their accuracy. No person in this firm's employment has the authority to make or give any representation or warranty in respect of the property. Floor plan measurements and distances are approximate only. We have not carried out a detailed survey nor tested the services, appliances or specific fittings. Your home is at risk if you do not keep up repayments on a mortgage or other loan secured on it.

GROUND FLOOR
374 sq.ft. (34.7 sq.m.) approx.



1ST FLOOR
358 sq.ft. (33.3 sq.m.) approx.



TOTAL FLOOR AREA : 732 sq.ft. (68.0 sq.m.) approx.

Whilst every attempt has been made to ensure the accuracy of the floorplan contained here, measurements of doors, windows, rooms and any other items are approximate and no responsibility is taken for any error, omission or mis-statement. This plan is for illustrative purposes only and should be used as such by any prospective purchaser. The services, systems and appliances shown have not been tested and no guarantee as to their operability or efficiency can be given.

Made with Metropix ©2025

Hanley's Estate Agents
25 High Street, Highworth, SN6 7AG
Tel: 01793 762005 mail@hanleys.co.uk

