

# 42 Village Centre, £1,417 pcm\*

(Other charges apply)

RICHMOND  
VILLAGES

Part of Bupa

3F

1



1



EPC - B



## One Bedroom Third Floor Apartment

Richmond Villages Wood Norton are delighted to present this well-appointed one-bedroom assisted living apartment, positioned on the third floor with a desirable south-facing aspect overlooking the Reception courtyard. The apartment benefits from lift access to an exceptional range of communal facilities, including the main reception, the Bredon restaurant, bar and coffee lounge, library, wellness spa with swimming pool, and several terrace areas.

### Specification

- Living room featuring a double-glazed window overlooking the courtyard and a remote-controlled electric fire with decorative marble surround.
- Modern fitted kitchenette with under-cupboard lighting and integrated fridge with freezer compartment.
- Master bedroom with double-glazed windows overlooking the courtyard.
- En-suite shower room with walk-in shower, modern sanitary ware and heated towel rail.
- Entrance hall with useful storage cupboard.
- Underfloor heating throughout.
- TV and satellite points\*.
- Well stocked flower borders and lawns maintained by the Village Gardeners.
- Allocated parking space for one car.

\*Satellite subscription not included.

Important Notice: These particulars are intended to give a fair and substantially correct overall description. Other fees and charges apply, please contact the Village Advisers for further details. Properties are sold on a 125-year lease, which commenced in 2020..



01386 862 222

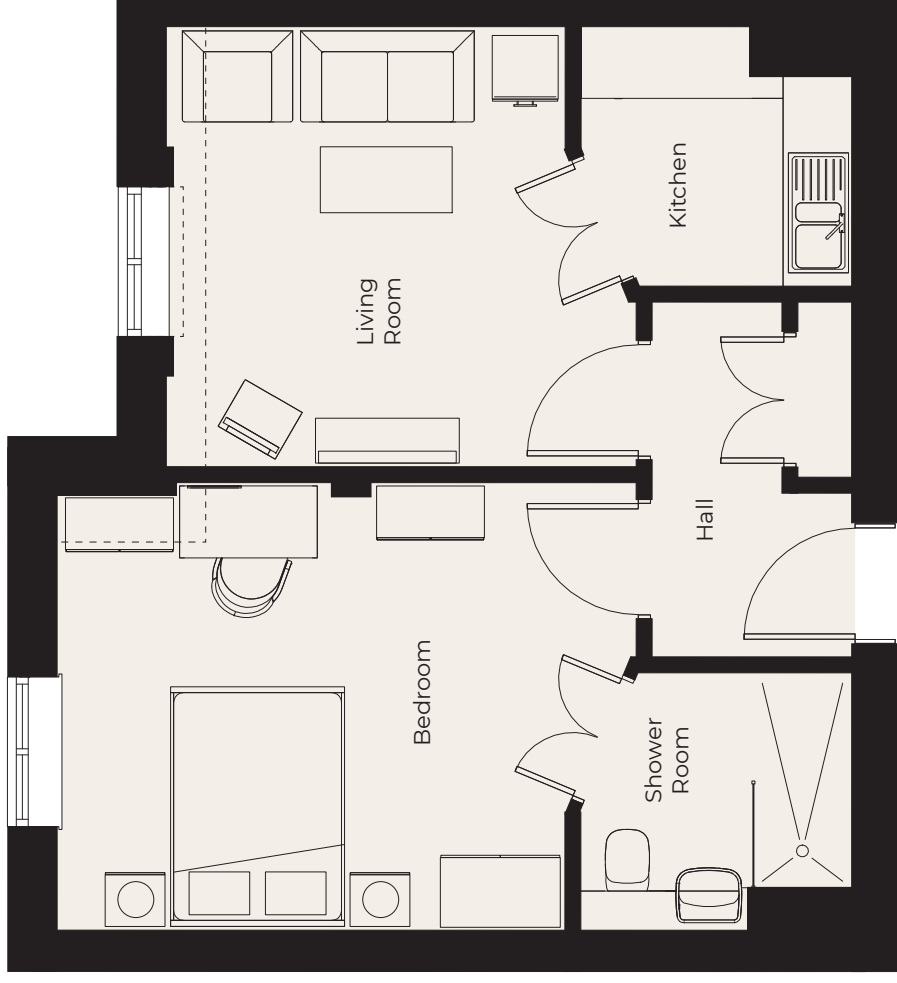
woodnorton@richmond-villages.com

Richmond Villages Wood Norton,  
Evesham Road, Wood Norton, Evesham, Worcestershire WR11 4TY

# 42 Village Centre

Floor 3 | 45.60m<sup>2</sup> – 490.83ft<sup>2</sup>

|                    |                 |
|--------------------|-----------------|
| <b>Kitchen</b>     | 2300mm x 2145mm |
| 7'7" x 7'          |                 |
| <b>Living Room</b> | 3940mm x 3645mm |
| 12'11" x 12'       |                 |
| <b>Bedroom</b>     | 4835mm x 3718mm |
| 15'10" x 12'2"     |                 |
| <b>Shower Room</b> | 2300mm x 2180mm |
| 7'7" x 7'2"        |                 |



These particulars are intended to give a fair and substantially correct overall description.

Measurements have been taken at 1500mm skimming height.

All dimensions are approximate. Bedroom measurements include the wardrobe if applicable. Room measurements include bay windows if applicable.

Furniture layout is to give an indicative impression. Although all efforts have been made to ensure its accuracy at time of print dimensions, fixtures, fittings, finishes and specifications are subject to change without notice.

The properties are sold unfurnished.

