



PCM

**£2,550**

**\*\*AVAILABLE MID FEBRUARY 2026\*\***

A bright and spacious four bedroom detached family home available in January on a part furnished basis. The property is located in a quiet, tucked away sought after road which is within walking distance of local schools (Wycombe Abbey, Royal Grammar School, Godstowe & Hamilton Primary) and High Wycombe mainline railway station. The accommodation comprises; entrance hall, guest cloakroom, large living room, modern fitted kitchen/dining room, four double bedrooms, en-suite shower room and family bathroom. The property further benefits; integral garage, ample driveway parking, enclosed rear garden, gas central heating and UPVC double glazing.

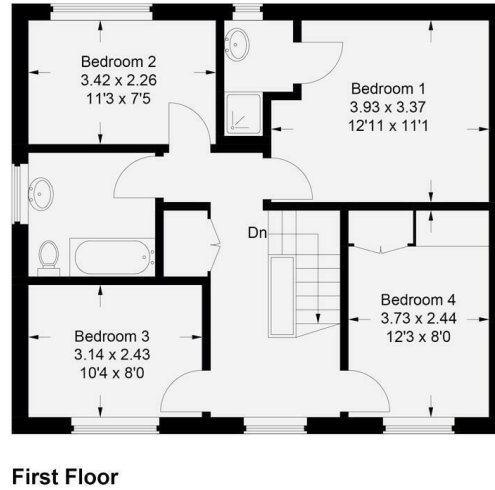
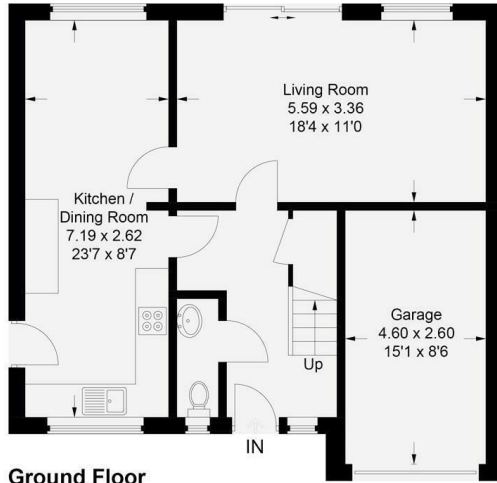
HOLDING DEPOSIT: £646.15

- AVAILABLE FEBRUARY
- EN-SUITE SHOWER ROOM
- MODERN KITCHEN
- FAMILY BATHROOM
- DRIVEWAY PARKING
- INTEGRAL GARAGE
- GUEST CLOAKROOM
- LARGE LIVING ROOM
- ENCLOSED REAR GARDEN
- CLOSE TO TRAIN STATION



**24 Maybrook Gardens, High Wycombe, Buckinghamshire, HP13 6PJ**

Estate Agents ~ Lettings Agents ~ Valuers ~ Independent Mortgage Advisors



Approximate Gross Internal Area  
 Ground Floor = 62.9 sq m / 677 sq ft  
 First Floor = 60.1 sq m / 647 sq ft  
 Total = 123.0 sq m / 1,324 sq ft  
 (Including Garage)

