



## Christina Street, EC2A

£2,750 Per calendar month

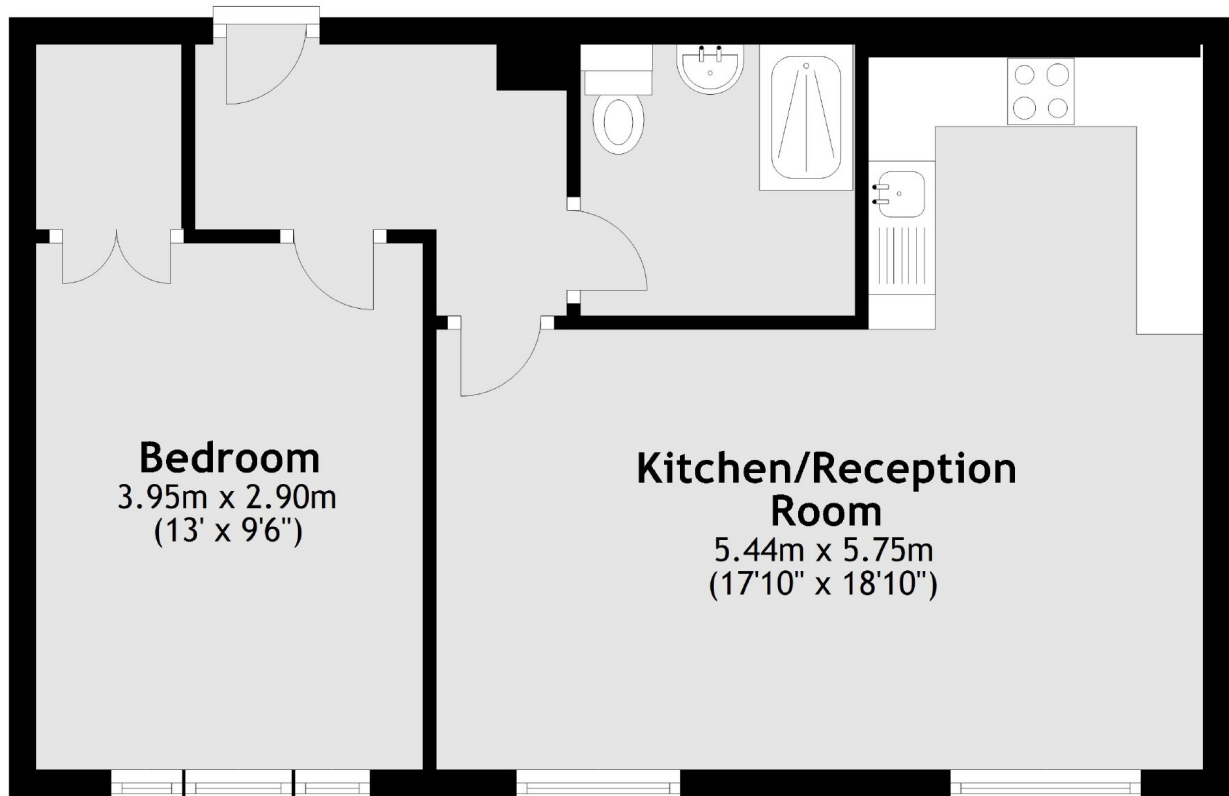
A one bedroom first floor apartment located in the heart of Shoreditch. The property has wooden floors through out, a semi open plan living area, a double bedroom and a bathroom with a walk in shower.

The apartment is located in the heart of Shoreditch with a great choice of restaurants, cafes and bars available. The apartment is a short distance to Liverpool Street and Shoreditch High Street stations.

### Features

- Great Location
- Wooden Flooring
- Warehouse Conversion
- First Floor
- Furnished
- Great Transport Links

Christina Street,  
London, EC2A



Total area: approx. 47.6 sq. metres (512.4 sq. feet)

**Dexters**

Shoreditch  
44 Great Eastern Street  
London  
EC2A 3EP  
Lettings  
0207 483 6372

Energy Rating: C. We aim to make our particulars both accurate and reliable. However they are not guaranteed; nor do they form part of an offer or contract. If you require clarification on any points then please contact us, especially if you're traveling some distance to view. Please note that appliances and heating systems have not been tested and therefore no warranties can be given as to their good working order.

 **RICS** | Regulated  
Estate Agent  
and Letting Agent

dexters.co.uk