



Coleridge Mews, Coleridge Road, N4 3NY
£4,250 pcm

**DAVID
ANDREW** | your
most
valuable
asset

1E The Workshop, Coleridge Mews

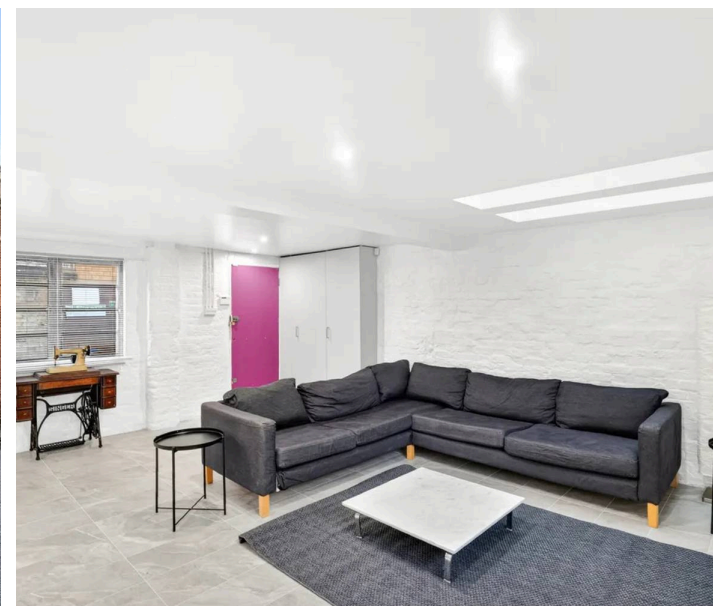
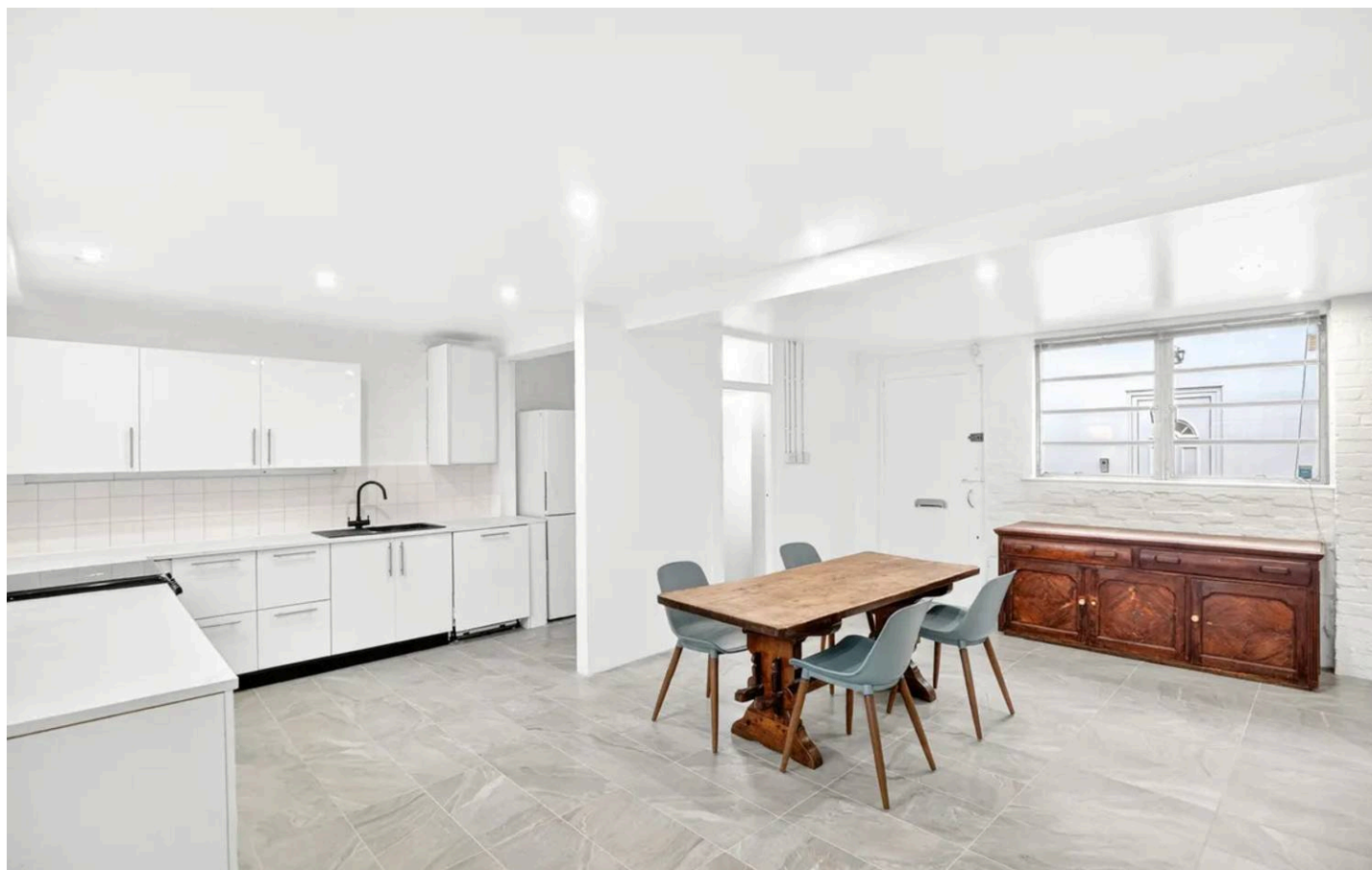
Coleridge Road, London

A beautifully converted warehouse, formerly a textile workshop, offering a unique blend of industrial character and contemporary living. This distinctive building is a rare gem in Finsbury Park, showcasing original warehouse features and exceptional charm throughout.

Spanning 128 square metres (1377 square feet), the spacious living room is bathed in natural light from double glazed windows, creating a warm and welcoming atmosphere ideal for both relaxing evenings and entertaining guests. The fully fitted modern kitchen boasts sleek cabinetry and integrated appliances, making meal preparation a pleasure and offering ample storage for all your culinary needs. Throughout the home, elegant wooden flooring adds a touch of sophistication and ensures easy maintenance, while generous built-in storage areas help keep every-day living clutter-free. Each of the three double bedrooms provides a peaceful retreat, with plenty of space for wardrobes and additional furnishings, perfect for families or professionals seeking room to grow.

Located just a short walk from both Finsbury Park and Arsenal stations, commuting into the City and beyond is effortless, while a wealth of local amenities including shops, cafes, and restaurants are within easy reach, ensuring you are never far from daily essentials or vibrant social spots. The area is well known for its community spirit and excellent transport links, making it a sought-after choice for those looking to enjoy the best of North London living. The property is offered furnished and available now.

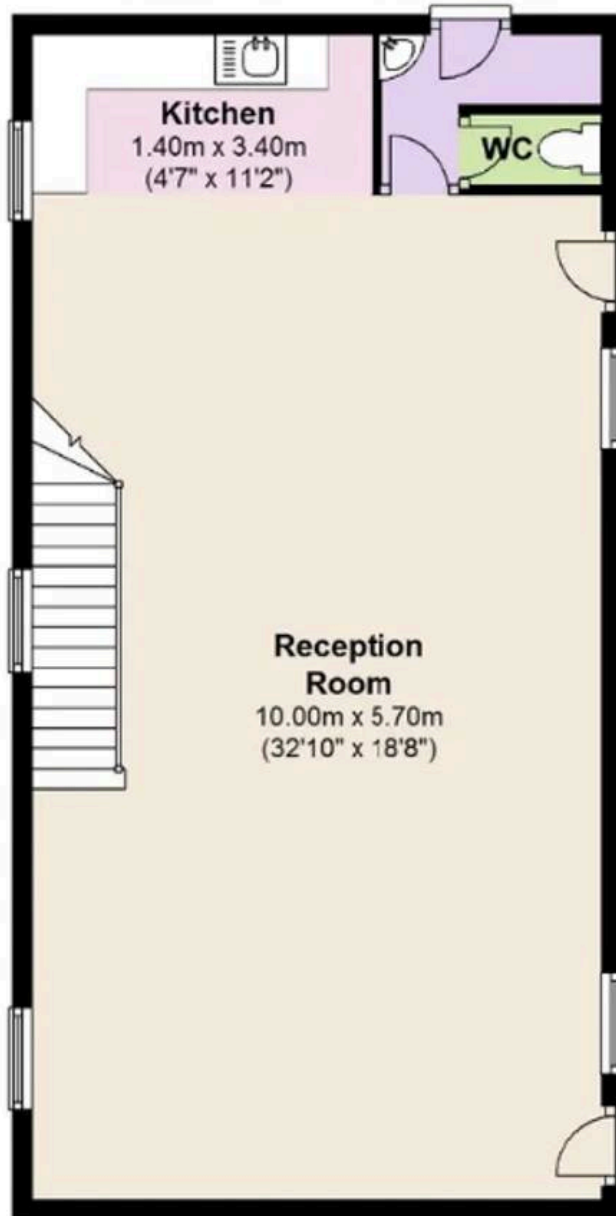
Council Tax band: E / EPC Rating E





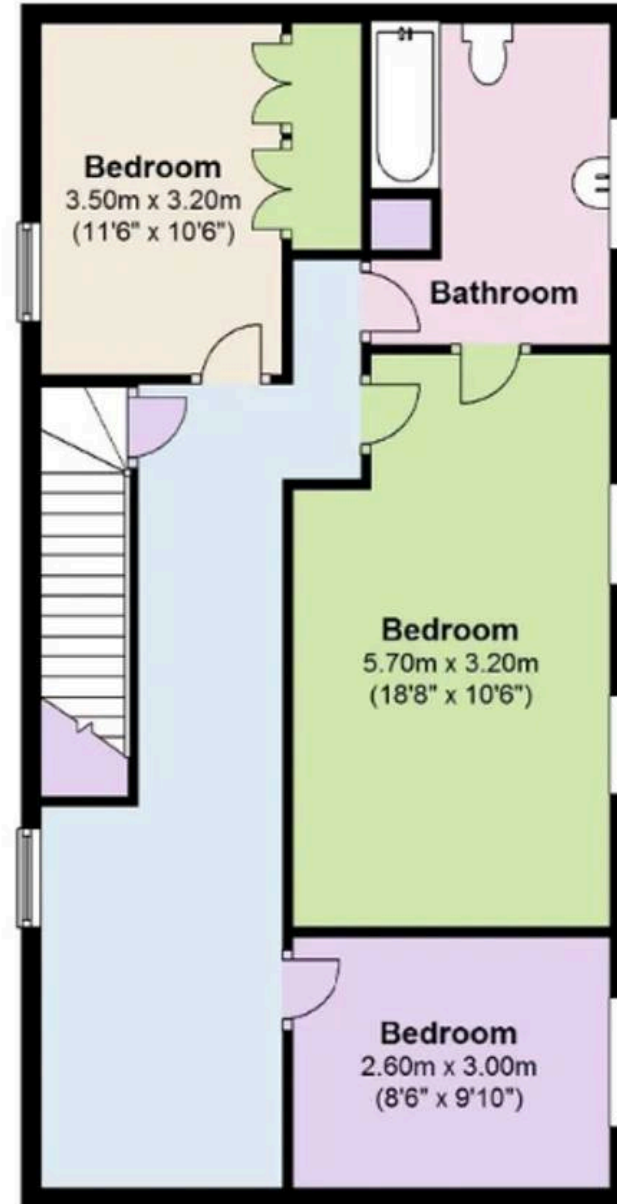
Ground Floor

Approx. 64.8 sq. metres (697.7 sq. feet)



First Floor

Approx. 63.1 sq. metres (679.7 sq. feet)



scan to book a viewing



These plans are only open to you and your enquiries and those of professional representatives. David Andrew Estates accepts no liability for any error contained in these particulars.