



Seager Place, SE8

£415,000

Exciting news for buyers! The current owner will cover the first year of service charges, offering you added value and peace of mind as you settle into your new home.

Don't miss this fantastic opportunity!

'The Crescent' is a fantastic modern build development situated within a few moments walk of Deptford Bridge DLR station.

Located on the 4th floor, and measuring 826 Sq. Ft, this brilliant three double bedroom, two bathroom apartment is sure not to disappoint. The master bedroom benefits from an en-suite bathroom, a spacious open plan lounge/kitchen with spectacular southeasterly views over Broadway Fields and Ravensbourne River. Further features include family bathroom, a private balcony and ventilation air filter system.

The development has a 24 hour concierge service, 3 shared roof terraces and a viewing gallery.

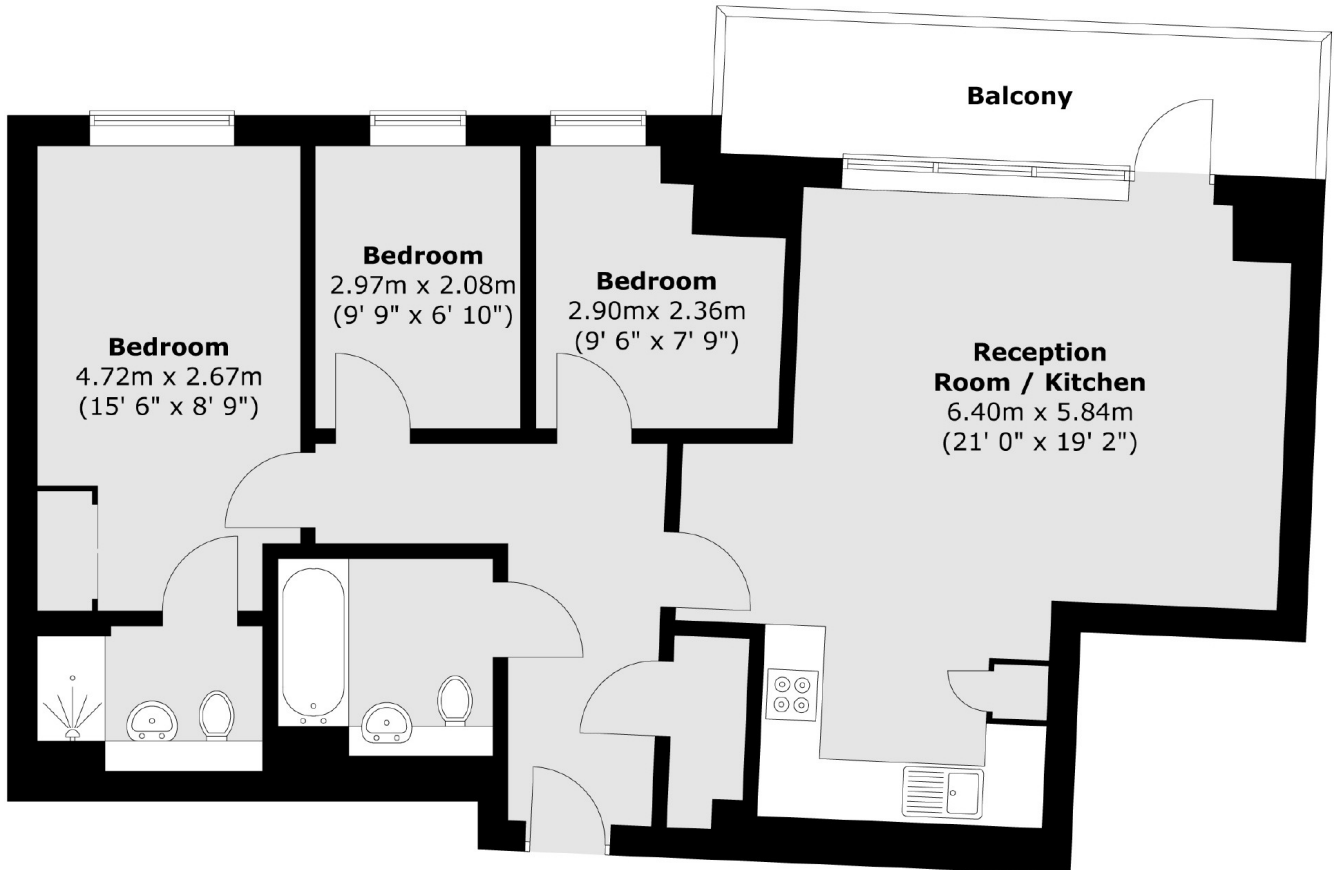
The Crescent is located just moments from Deptford Bridge DLR with brilliant access to Canary Wharf, The City (Bank Station). Greenwich is just a short stroll away with its historic Maritime past, amazing Park with stunning views and numerous cafes, bars and

Features

- Three Double Bedrooms
- 24 Hour Concierge
- Two Bathrooms
- 826 Sq Ft
- Private Balcony
- 1 Minute Walk To Deptford Bridge DLR

Seager Place, London, SE8

Fourth Floor



Total area (approx.) : 76.7 sq. m (826 sq. ft)
Total balcony area (approx.) : 8.5 sq. m (92 sq. ft)