



See More Online

# KFB: Key Facts For Buyers

A Guide to This Property & the Local Area

Thursday 08<sup>th</sup> January 2026



## LONG JOHN HILL, NORWICH, NR1

### Whittley Parish | Long Stratton

Beatrix Potter Cottage The Street Long Stratton NR15 2XJ

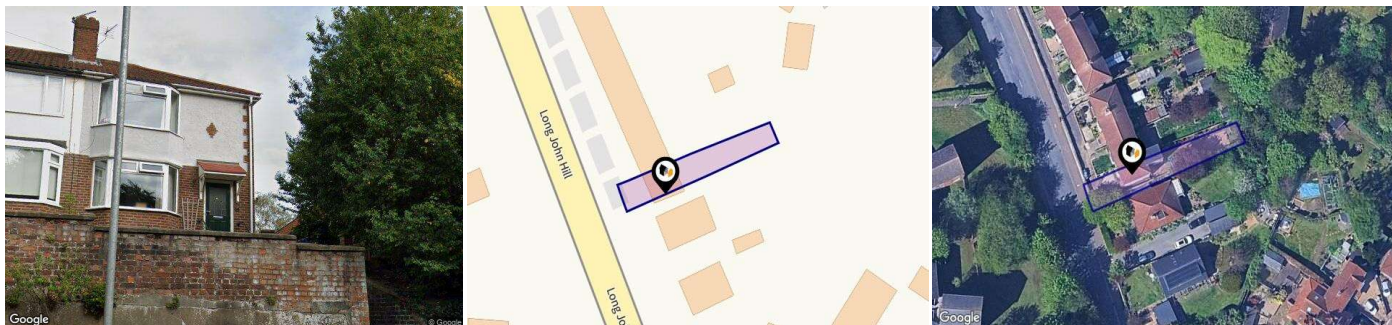
01508 531331

rachel@whittleyparish.com

www.whittleyparish.com



Powered by  
**aprift**  
Know any property instantly



## Property

Type:	Semi-Detached
Bedrooms:	3
Floor Area:	979 ft <sup>2</sup> / 91 m <sup>2</sup>
Plot Area:	0.06 acres
Council Tax :	Band B
Annual Estimate:	£1,860
Title Number:	NK10892


Tenure: Freehold

## Local Area

Local Authority:	Norfolk
Conservation Area:	No
Flood Risk:	
• Rivers & Seas	Very low
• Surface Water	Very low

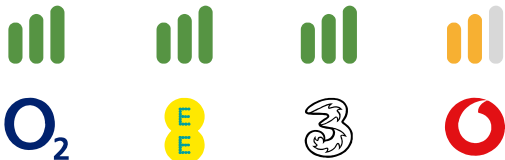
### Estimated Broadband Speeds

(Standard - Superfast - Ultrafast)

4	80	1800
mb/s	mb/s	mb/s
		

### Mobile Coverage:

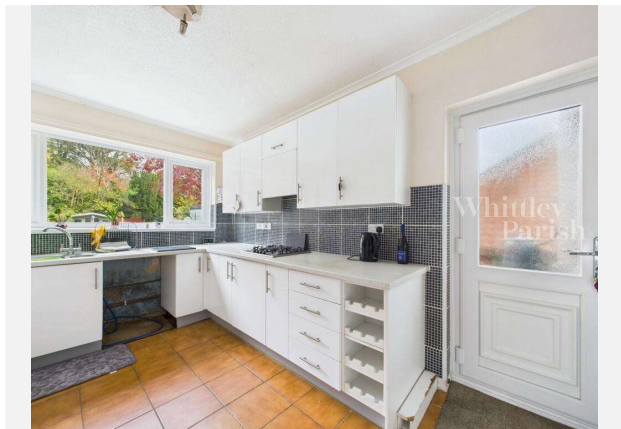
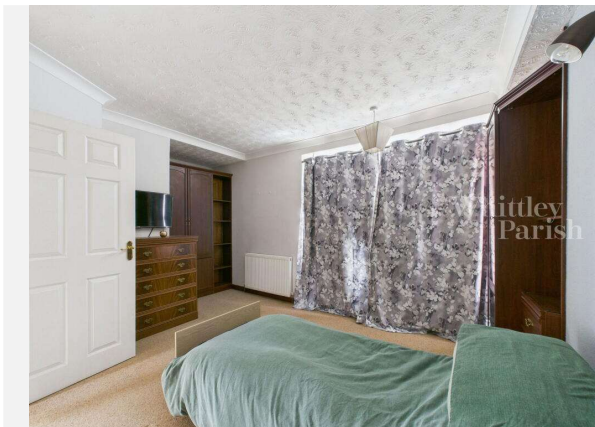
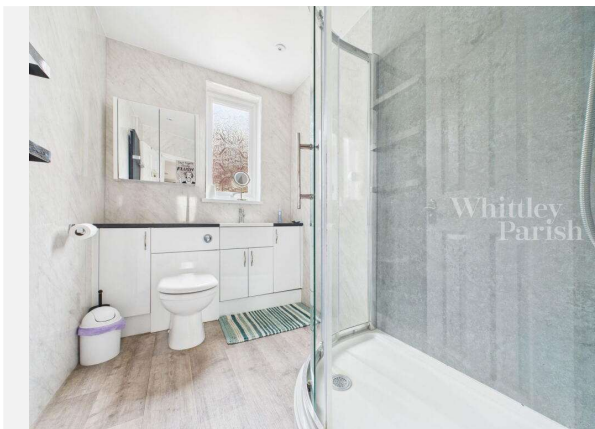
(based on calls indoors)



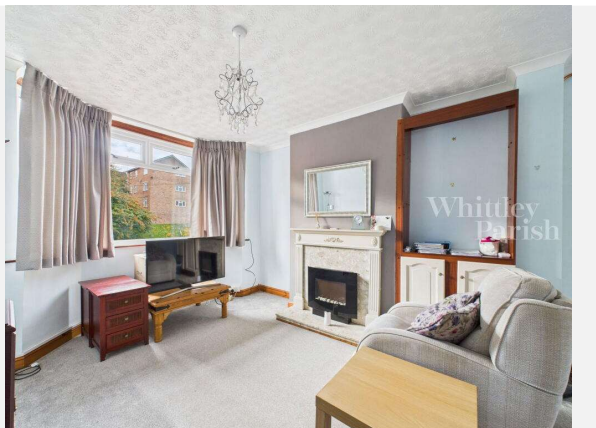
### Satellite/Fibre TV Availability:













LONG JOHN HILL, NORWICH, NR1





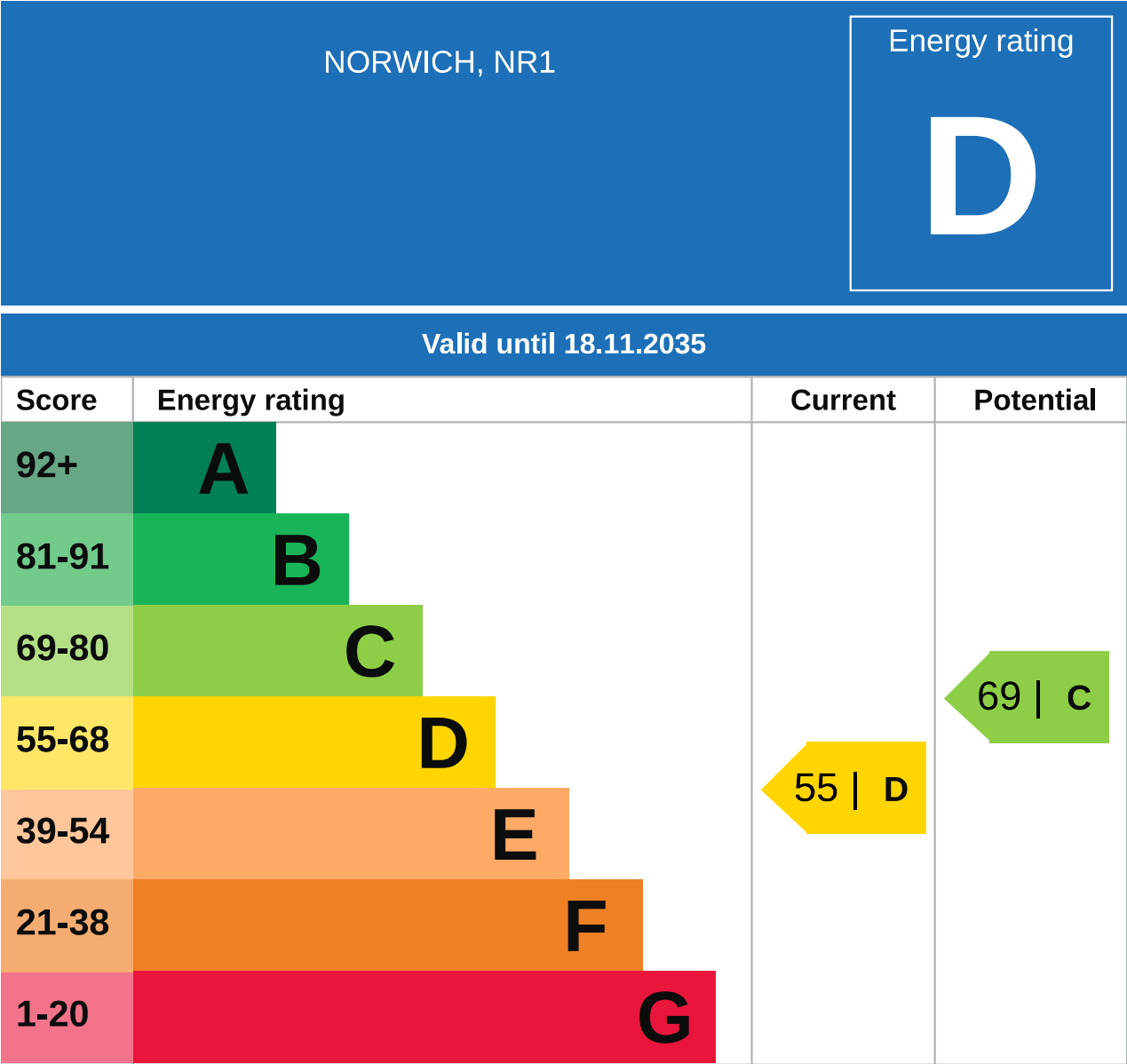
LONG JOHN HILL, NORWICH, NR1





LONG JOHN HILL, NORWICH, NR1









### Additional EPC Data

---

<b>Property Type:</b>	End-terrace house
<b>Walls:</b>	Solid brick, as built, no insulation (assumed)
<b>Walls Energy:</b>	Very poor
<b>Roof:</b>	Pitched, 75 mm loft insulation
<b>Roof Energy:</b>	Average
<b>Window:</b>	Fully double glazed
<b>Window Energy:</b>	Average
<b>Main Heating:</b>	Boiler and radiators, mains gas
<b>Main Heating Energy:</b>	Good
<b>Main Heating Controls:</b>	Programmer and room thermostat
<b>Main Heating Controls Energy:</b>	Average
<b>Hot Water System:</b>	From main system
<b>Hot Water Energy Efficiency:</b>	Good
<b>Lighting:</b>	Below average lighting efficiency
<b>Lighting Energy:</b>	Average
<b>Floors:</b>	Suspended, no insulation (assumed)
<b>Secondary Heating:</b>	Room heaters, electric
<b>Air Tightness:</b>	(not tested)
<b>Total Floor Area:</b>	91 m <sup>2</sup>



### Testimonial 1



It was a pleasure doing business with the Attleborough branch. Kept to every promise made and acted really fast. Made a stressful time far less stressful.

### Testimonial 2



We asked Whittleby Parish Diss to carry out a house valuation for us. Alex Parish came to do the job - he was kind, considerate and professional. The process was thorough but yet quick and easy for us. We couldn't ask for more - many thanks.

### Testimonial 3



The whole team at Whittleby Parish were first class from first introduction to final sale. With lots of estate agents in the Long Stratton area, this is the only one you need to know. Excellent would highly recommend.



/whittlebyparishmanagementltd



/whittlebyparish



/whittlebyparish/?hl=en

# Whittley Parish | Long Stratton

## Data Quality

We are committed to comprehensive property data being made available upfront to make the home buying and selling process quicker, easier and cheaper. This is why we have partnered with Sprift, the UK's leading supplier of property-specific data.



### Contains public sector information licensed under the Open Government License v3.0

The information contained within this report is for general information purposes only.

Sprift Technologies Ltd aggregate this data from a wide variety of sources and while we endeavour to keep the information up to date and correct, we make no representations or warranties of any kind, express or implied, about the completeness, accuracy, reliability, of the information or related graphics contained within this report for any purpose.

Any reliance you place on such information is therefore strictly at your own risk. In no event will we be liable for any loss or damage including without limitation, indirect or consequential loss or damage, or any loss or damage whatsoever arising from loss of data or profits arising out of, or in connection with, the use of this report.



### Whittley Parish | Long Stratton

Beatrix Potter Cottage The Street Long  
Stratton NR15 2XJ  
01508 531331  
rachel@whittleyparish.com  
www.whittleyparish.com

