



## Broomhouse Lane, SW6

£475,000

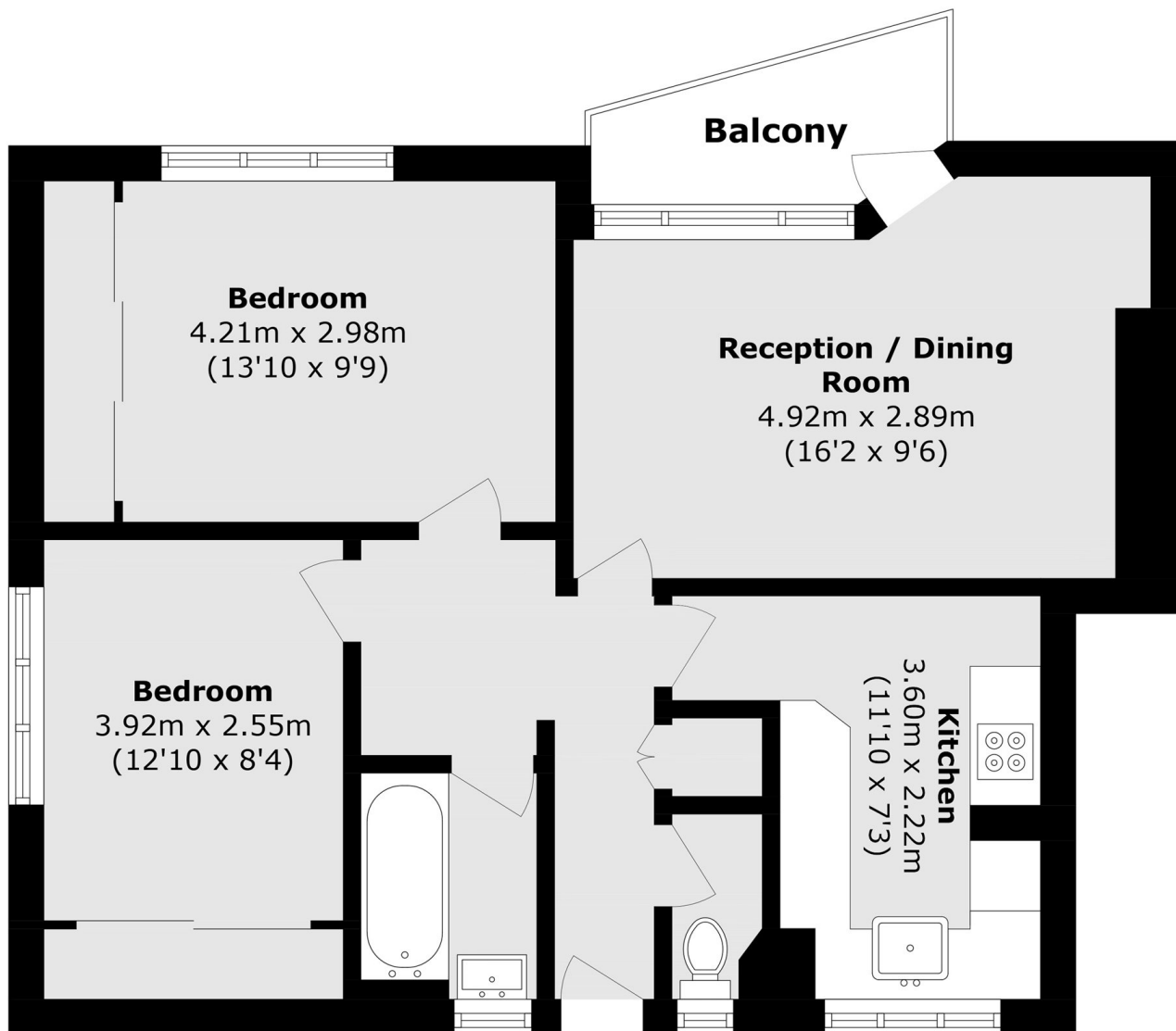
A large two double bedroom purpose-built flat in Parsons Green. The flat benefits further from a separate newly renovated kitchen, spacious living room with a private balcony facing Hurlingham Park.

Located on the Broomhouse Lane, the property is a short walk away from all the shops, restaurants and local amenities in Parsons Green and on the New Kings Road.

### Features

- Two Double Bedroom
- Private Balcony
- Purpose Built
- Separate Kitchen
- Parsons Green
- Hurlingham Park

# Broomhouse Lane, London, SW6



Total area (approx.): 61.0 sq. m (656.6 sq. ft)  
Balcony total (approx.): 3.4 sq. m (36.5 sq. ft)