



Connells

Lincoln Road
Peterborough



Property Description

This well-presented three-bedroom mid-terraced home offers generous and flexible living space arranged over two floors, making it an ideal choice for families, first-time buyers, or anyone seeking a practical and spacious home. Located in a residential setting with residents' parking, the property provides both convenience and comfort.

The ground floor features a lounge at the front of the home. A separate dining room offers an excellent space for mealtimes and gatherings, while the adjoining kitchen sits at the rear of the property, providing direct access into a useful lean-to area. This additional space connects further to a utility area and a ground-floor shower room, adding valuable functionality to the layout, a new fuse box has also been installed.

Upstairs, the first floor offers three well-proportioned bedrooms situated off a central landing. Each room is thoughtfully arranged to accommodate a variety of furniture layouts, making the space adaptable for family living, home working, or guest accommodation.

Externally, the home benefits from an enclosed rear garden, offering a private outdoor space ideal for relaxing, gardening, or entertaining. Residents' parking is available, adding to the overall convenience of the location.

This charming mid-terraced home combines character, practicality, and generous living spaces—perfect for a wide range of buyers.

Lounge

Bay window to the front, door to side and laminate flooring.

Hallway

Stairs to first floor.

Dining Room

Door to kitchen, window to lean to, storage cupboard and laminate flooring.

Kitchen

Door and window to lean to, space for appliances, tiled flooring and walls, high and low level storage with worktops over, cooker, stainless steel sink/drainage and mixer tap and radiator.

Lean To

Door to rear and side and window to dining room.

Shower Room

Window to side, shower cubicle, tiled walls, WC and wash hand basin.

First Floor

Bedroom One

Window to front, cupboard, laminate flooring and radiator.

Bedroom Two

Window to rear and side, airing cupboard, laminate flooring and radiator.

Bedroom Three

Window to rear, laminate flooring and radiator.

Outside

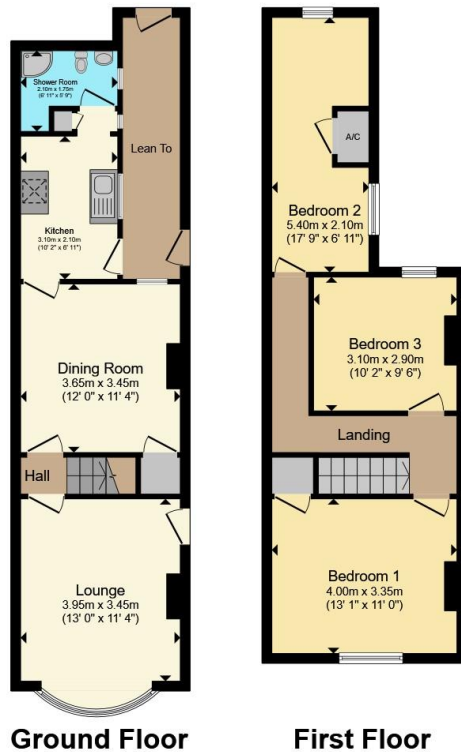
Rear Garden

Patio area.

Front

Residents parking.





Total floor area 93.5 m² (1,006 sq.ft.) approx

This floor plan is for illustrative purposes only. It is not drawn to scale. Any measurements, floor areas (including any total floor area), openings and orientation are approximate. No details are guaranteed, they cannot be relied upon for any purpose and they do not form part of any agreement. No liability is taken for any error, omission or misstatement. A party must rely upon its own inspection(s). Powered by www.propertybox.io



To view this property please contact Connells on

T 01733 314 775
E peterborough@connells.co.uk

14 Cowgate
 PETERBOROUGH PE1 1NA

EPC Rating: D Council Tax
 Band: A

view this property online connells.co.uk/Property/PBO312666

Tenure: Freehold



1. MONEY LAUNDERING REGULATIONS Intending purchasers will be asked to produce identification documentation at a later stage and we would ask for your co-operation in order that there will be no delay in agreeing the sale. 2. These particulars do not constitute part or all of an offer or contract. 3. The measurements indicated are supplied for guidance only and as such must be considered incorrect. Potential buyers are advised to recheck measurements before committing to any expense. 4. We have not tested any apparatus, equipment, fixtures, fittings or services and it is in the buyers interest to check the working condition of any appliances.

Connells Residential is registered in England and Wales under company number 1489613, Registered Office is Cumbria House, 16-20 Hockliffe Street, Leighton Buzzard, Bedfordshire, LU7 1GN. VAT Registration Number is 500 2481 05.

See all our properties at www.connells.co.uk | www.rightmove.co.uk | www.zoopla.co.uk

Property Ref: PBO312666 - 0003