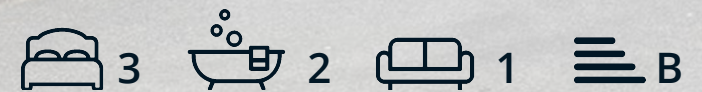




8 Maple Close, Storth Lane

South Normanton, DE55 3BH

£275,000



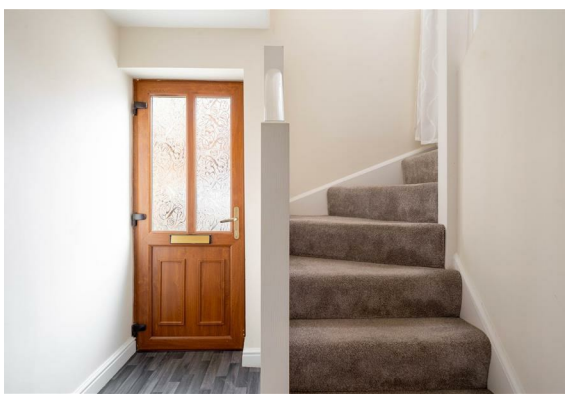
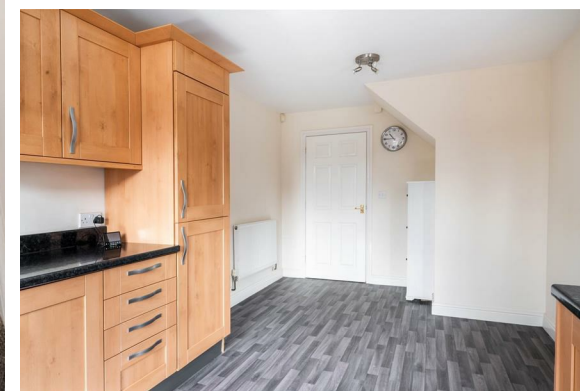
8 Maple Close, Storth Lane

South Normanton, DE55 3BH

Situated in this quiet, sought after development of large, executive detached family home, and within close proximity of the M1 and local amenities, is this well-presented and deceptively spacious 3 bedroom detached family home.

Offering 1350 sqft of accommodation over 2 storeys, the property features a large kitchen, living and dining room with patio doors leading onto the garden, 3 generously sized bedrooms and 2 modern bathrooms including the principle en-suite shower room.

Externally the property benefit from a large rear garden, driveway providing off road parking and an integral single garage.





Floor Plan

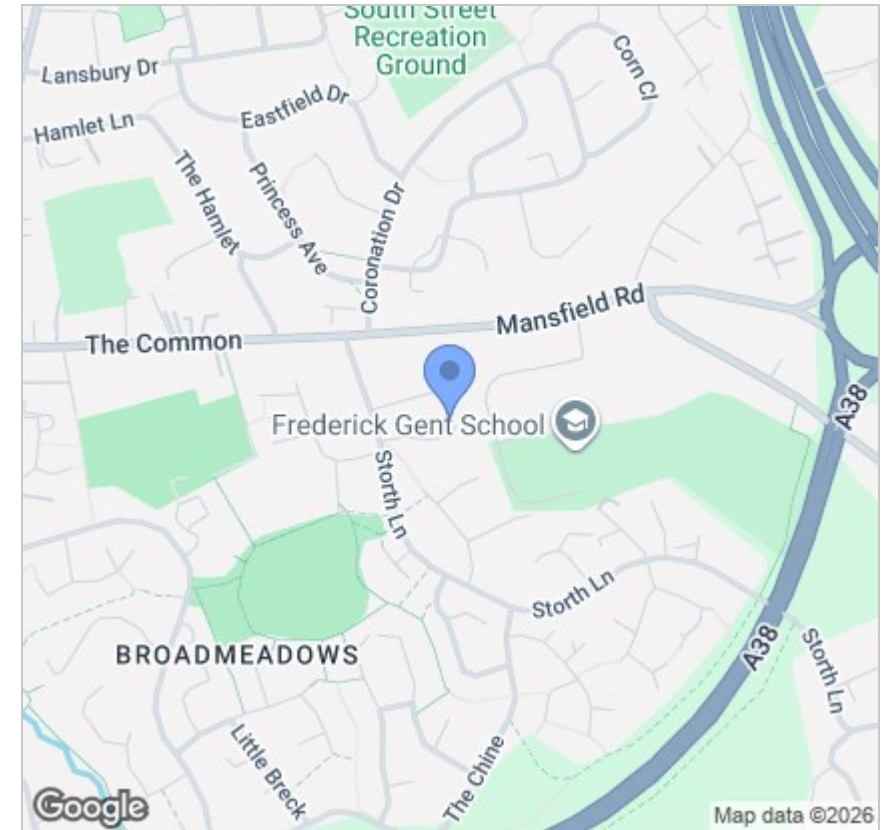


Viewing

Please contact our Chesterfield Office on 01246 567540 if you wish to arrange a viewing appointment for this property or require further information.

These particulars, whilst believed to be accurate are set out as a general outline only for guidance and do not constitute any part of an offer or contract. Intending purchasers should not rely on them as statements of representation of fact, but must satisfy themselves by inspection or otherwise as to their accuracy. No person in this firm's employment has the authority to make or give any representation or warranty in respect of the property.

Area Map



Energy Efficiency Graph

