



VICTORIA HOUSE



Victoria House, NW7

Stunning detached house extending to over 6,408 square feet with off-street parking for six cars. The beautiful garden with lush green lawns, large terraces and a canopy of mature trees backs onto open grazing land. The property provides excellent family accommodation, superb entertaining rooms as well as a huge games room, indoor pool and spa area in the lower ground floor.















































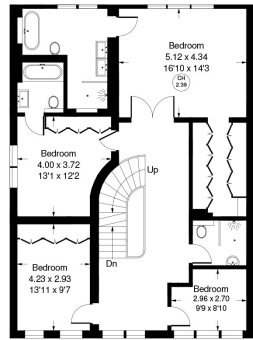




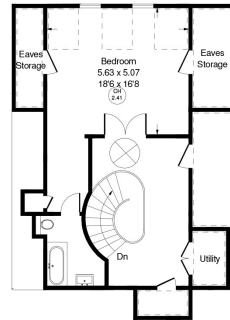
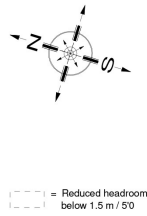
Hendon Wood Lane is set amidst rolling greenbelt countryside close to both Arkley and Totteridge yet within easy reach of London. Arkley is within 5 miles of both the M1 and M25 motorways providing easy access to all the London airports. A wide range of schools including Habs, Lochinver, Mill Hill, Aldenham, Belmont and Queen Elizabeths provide top class education in the area.

Victoria House, NW7

Local Authority - London Borough of Barnet



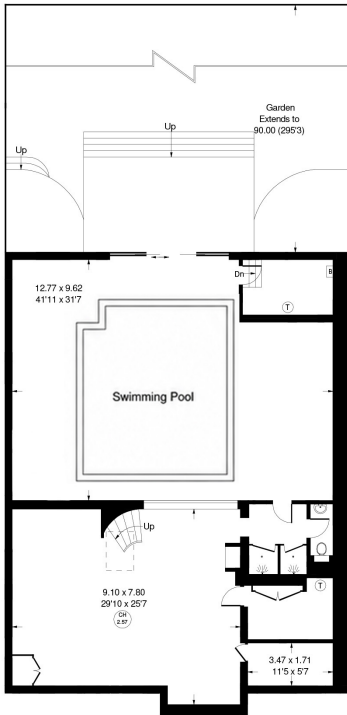
First Floor



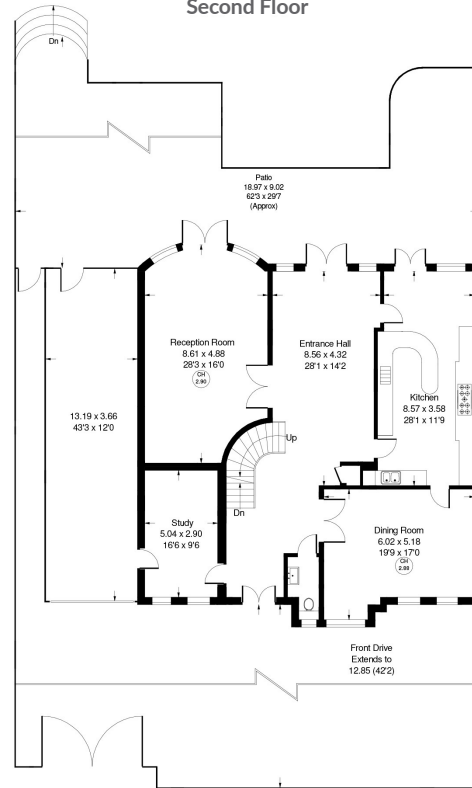
Second Floor

Approx. Gross Internal Area = 595.3 sq m / 6408 sq ft
 Eaves Storage = 10.8 sq m / 116 sq ft
 Total = 606.1 sq m / 6524 sq ft

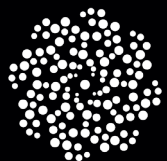
- Dining Room
- Drawing Room
- Study
- Eat-in kitchen
- Principal suite
- Guest suite
- Attic bedroom with en suite bathroom
- Double bedroom
- Single bedroom
- Family bathroom
- Guest cloakroom
- Games/party/cinema room
- Indoor heated swimming pool
- Steam room and shower
- Off-street parking for six cars
- Expansive terraces
- 295.3 ft lawned garden



Lower Ground Floor



Ground Floor



MOUNTGRANGE
PRIVATE OFFICE

27 Kensington Park Road, London W11 2EU

liz@mountgrangeheritage.co.uk

teresa@mountgrangeheritage.co.uk

julia@mountgrangeheritage.co.uk