



## Wooler Street, SE17

£399,950

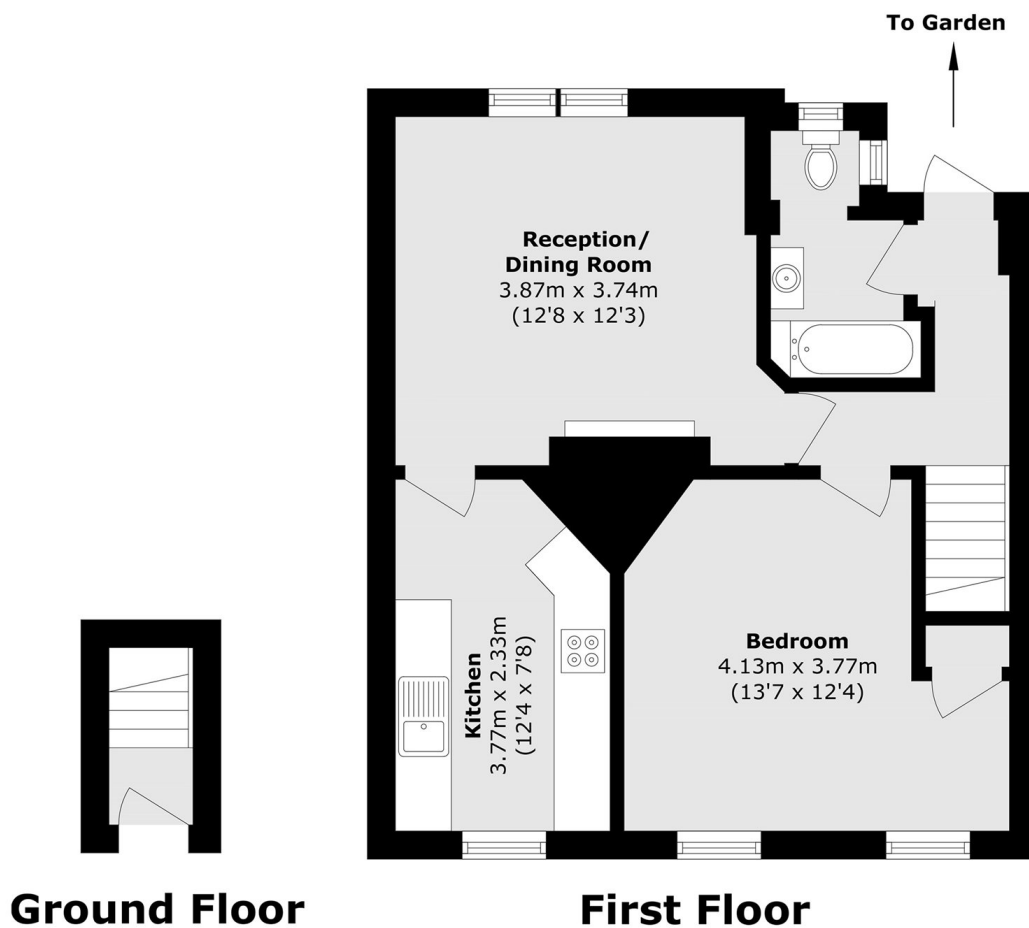
A fantastic first floor one bedroom period home benefitting from a private entrance and direct access down to a private rear garden. The property has a reception room with views over the rear garden that leads through into the separate galley kitchen. The large bedroom had built-in storage and this is served by a family bathroom. The property also has a loft for storage and would make a great first time purchase or a pied a terre. Sold with no onward chain.

Peacefully located on Wooler Street only a short walk away from Elephant and Castle, arguably one of the most exciting areas, with its rapid growth and vast array of local trendy amenities. Access to Northern and Bakerloo Lines provide easy access into the City and the West End.

### Features

- One Bedroom
- Private Garden
- First Floor
- Quiet/Convenient Location
- Private Entrance
- No Onward Chain

# Wooler Street, London, SE17



Total area (approx.): 50.1 sq. m (539.2 sq. ft)