



Sovereign Crescent, SE16

£1,000,000

A rarely available three storey freehold house set on the banks of the River Thames with a separate kitchen, large double living and dining room, three spacious double bedrooms, utility room, garage and private rear garden.

Sovereign Crescent is enviably located on the riverside with views across the water to Canary Wharf and back towards the city. Nearby is the Stave Hill Ecological Park as well as easy access to Canada Water, Rotherhithe and Surrey Quays, with their various amenities.

Features

- Freehold House
- Three Bedrooms
- Private Rear Garden
- Direct River Views
- Garage
- Two Bathrooms & Guest WC



Sovereign Crescent, SE16

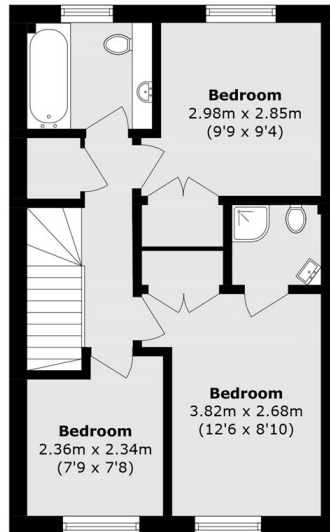
Arranged over three floors the house is beautifully decorated throughout. The house has large windows in every room and is flooded with natural light.

In addition the house offers three double bedrooms along with two bathrooms and an additional guest WC. The master bedroom has views of the river and the garage offers ample storage.

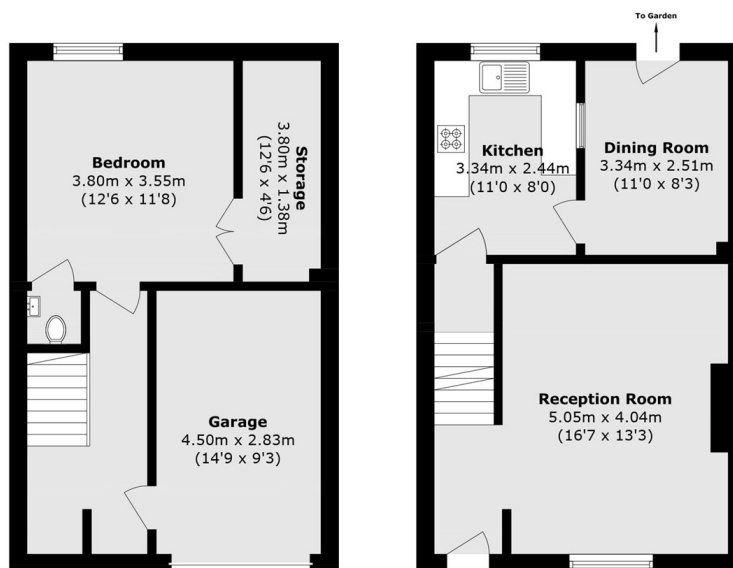
The house is located on a private road offering panoramic views of the river and moments from a range of riverside eateries. The house also offers off street parking.



Sovereign Crescent, London, SE16



First Floor



Lower Ground Floor

Ground Floor

Total area (approx.): 128.4 sq. m (1382.0 sq. ft)
(Including Garage)