

**Sudbourne Road, Brixton, SW2**

5 bedroom house for sale

**£1,500,000**

Freehold

## Property Details

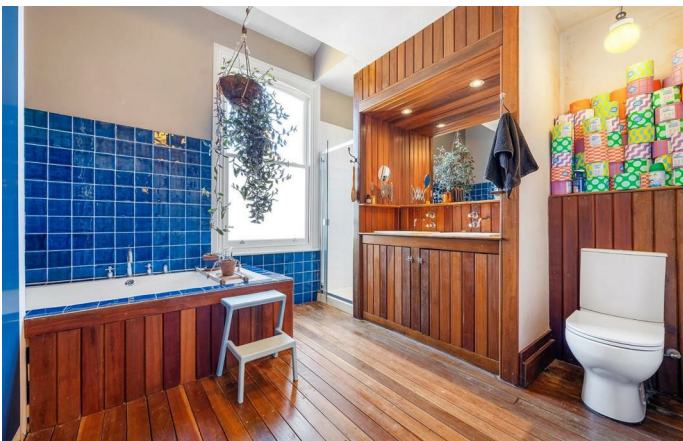
A characterful five-bedroom Victorian house with a large South-facing garden, set on a quiet residential street. A welcoming entrance hallway with striking décor sets the tone, leading to a double reception room with wooden floorboards, a feature exposed brick fireplace with a log-burning stove, and large bay sash windows that fill the space with natural light. To the rear, a stylish kitchen and dining area features green cabinetry, solid wood worktops, vibrant tiled splashbacks, and a central island, with roof glazing above allowing light to pour in. A separate utility room and downstairs WC add practicality. The landscaped garden offers decking, paved seating areas, mature planting and a tranquil pond. Across the upper floors are five generous double bedrooms and a family bathroom with bath, separate shower and double sink. The loft has been transformed into a striking principal suite with skylights, timber detailing and a distinctive en-suite.

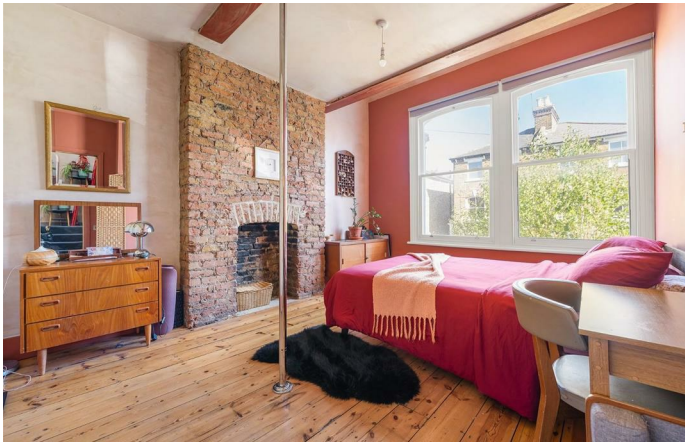
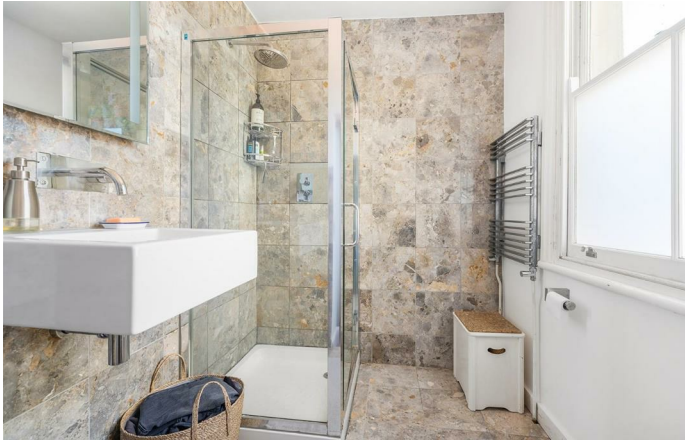
## Features

- Five bedrooms
- Three bathrooms plus downstairs WC
- South-facing garden
- Victorian house
- Highly desirable road
- Local amenities of Acre Lane and Brixton Hill
- Central Brixton a ten-minute stroll
- Clapham High Street a fourteen-minute walk
- Victoria and Northern lines
- Chain-free

Council tax band F    EPC rating D (60)







Sudbourne Road, Brixton, SW2

**Sudbourne Road, SW2**  
**5 Bedroom House**

APPROXIMATE GROSS INTERNAL AREA WITH CELLAR: **2370 SQ FT / 220.2 SQ M**

APPROXIMATE GROSS INTERNAL AREA WITHOUT CELLAR: **2303 SQ FT / 213.9 SQ M**



While we try our very best, floor plans are produced as a guide only and we take no responsibility for the precise accuracy with which any property is represented.

Sudbourne Road, Brixton, SW2

