

Betjeman Gardens, Chorleywood, Rickmansworth, WD3 5QY

Guide Price £675,000

2 2 1



A beautifully presented spacious two-bedroom lower ground floor apartment, conveniently situated just moments from Chorleywood shops and Train Station and the open green spaces of Chorleywood Common.

*** PLEASE QUOTE REF KW 0404 ***

Key Features

- Two Bedrooms
- Lower Ground Floor Apartment
- Patio Area
- Main Bedroom with Ensuite
- Close to Chorleywood Train Station
- Close to Chorleywood Common
- One Allocated Parking Space
-
-

Approximate Gross Internal Area = 116.1 sq m / 1,250 sq ft

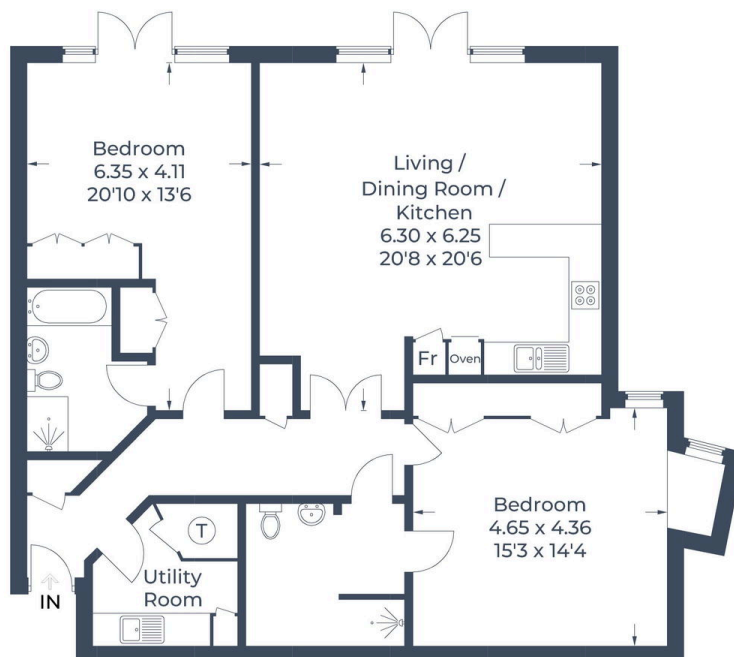


Illustration for identification purposes only,
measurements are approximate, not to scale.
© CJ Property Marketing Produced for David Cooper