



**WETHERELL**  
MAYFAIR'S FINEST PROPERTIES



## MOUNT STREET, W1K

£1,000,000

An exceptionally well located studio apartment situated on one of Mayfair's finest streets

Measuring 582 sq ft and located in a purpose built block with Mayfair's iconic terracotta facade, this is the perfect pied-a-terre. This studio apartment has a contemporary finish throughout with high ceilings and three large windows providing great natural light and views of Mount Street Gardens.

TENURE: Leasehold, approximately 119 years remaining

MOUNT STREET AND ITS SURROUNDING STREETS AND GARDENS MAKE UP ONE OF THE MOST UNIQUE 'VILLAGES' IN LONDON WHERE INTERNATIONAL LUXURY BRANDS RUB SHOULDERS WITH HERITAGE CRAFTSMEN AND MICHELIN STAR DINING. MOUNT STREET

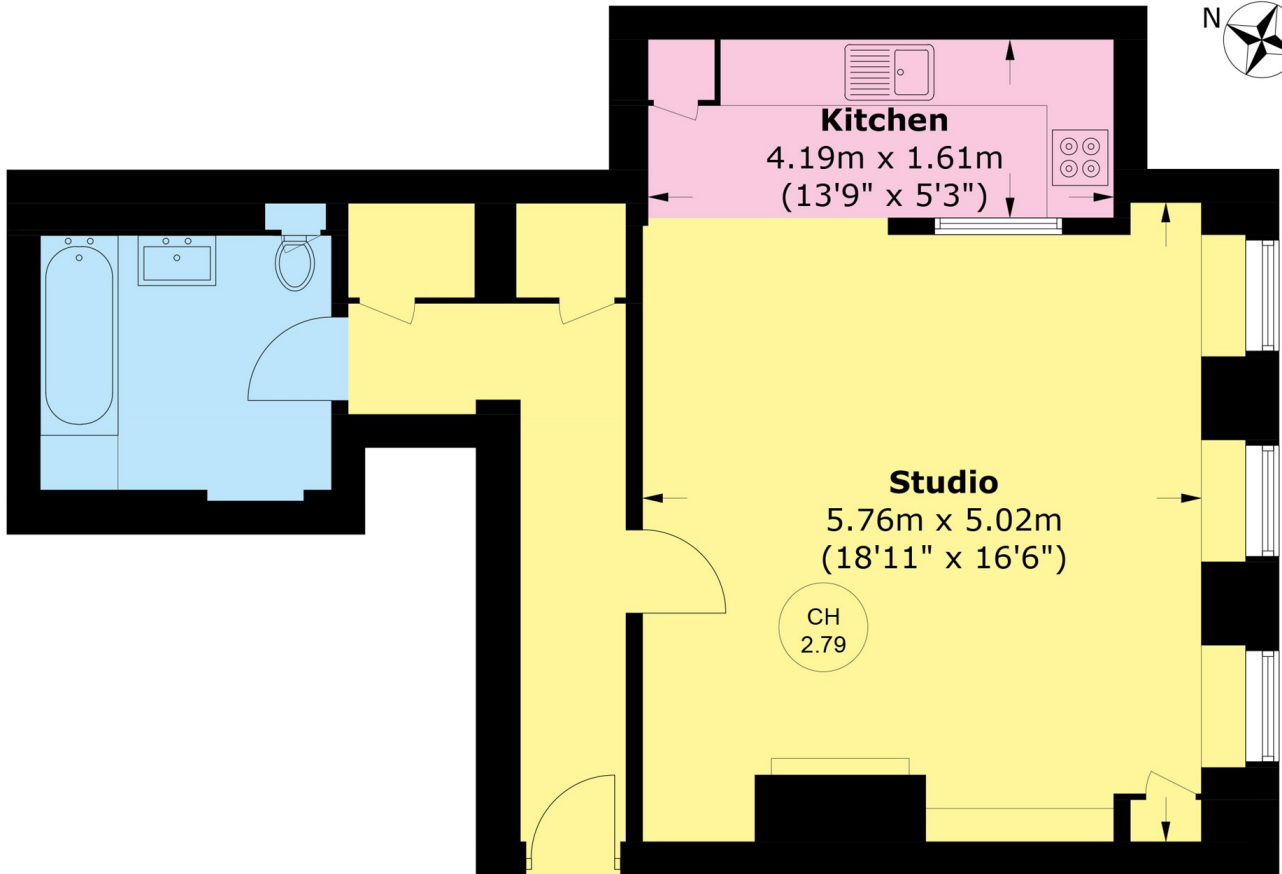


## FEATURES

- Mount Street • Studio • Period building • Long lease • 582 sq. ft •



MOUNT STREET,  
LONDON, W1K



## Lower Ground Floor

Total area (approx.): 54.1 sq. m (582.3 sq. ft)



**WETHERELL**  
MAYFAIR'S FINEST PROPERTIES

102 Mount Street,  
London, W1K 2TH  
T: 020 7529 5566  
E: sales@wetherell.co.uk

We aim to make our particulars both accurate and reliable. However they are not guaranteed; nor do they form part of an offer or contract. If you require clarification on any points then please contact us, especially if you're traveling some distance to view. Please note that appliances and heating systems have not been tested and therefore no warranties can be given as to their working order.

wetherell.co.uk